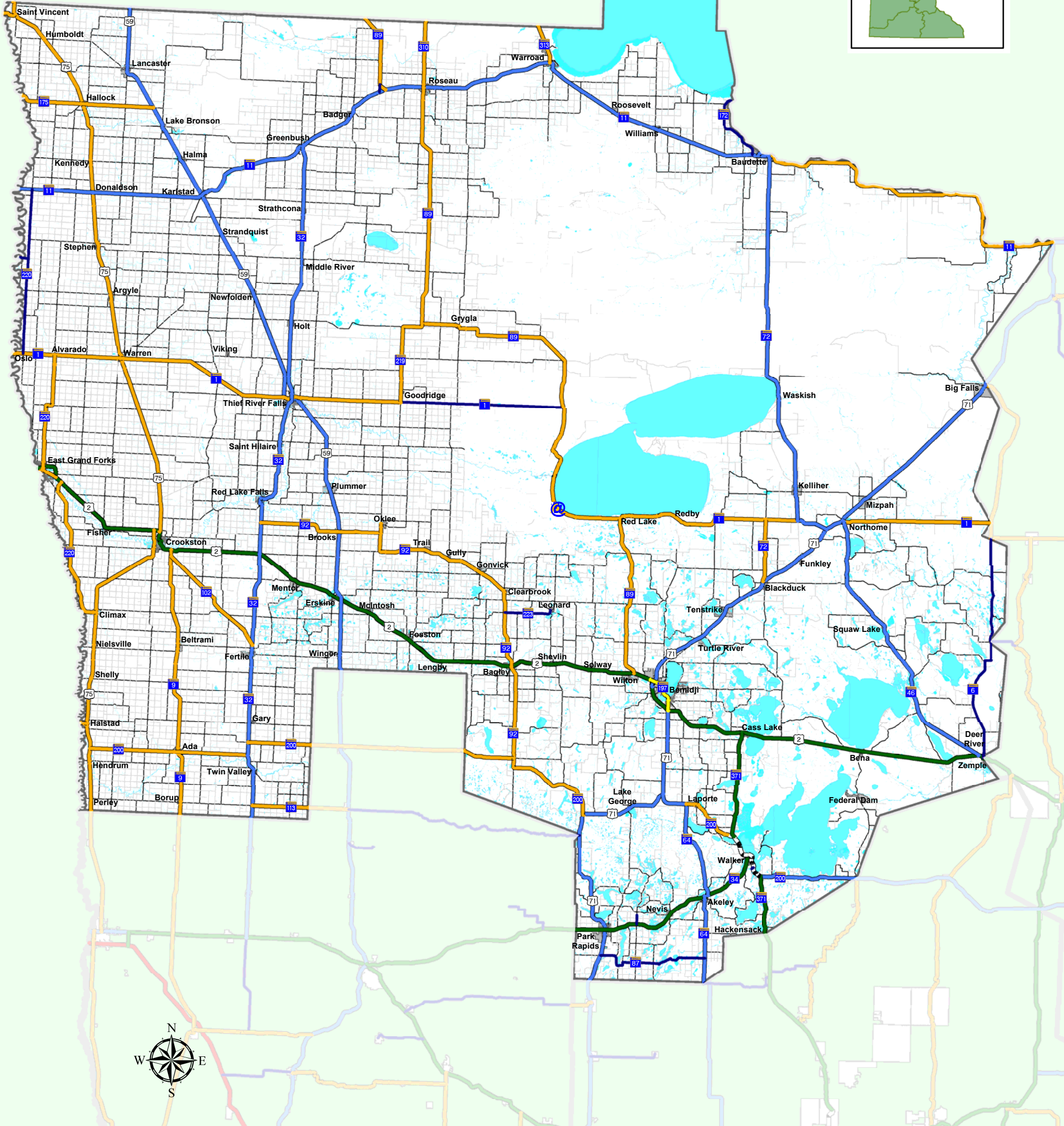
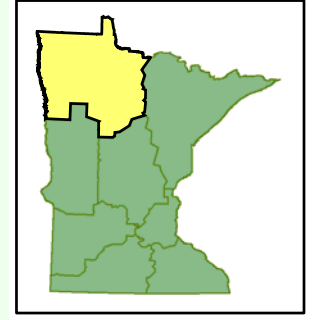


Access Management Primary Categories District 2 - Bemidji

Updated March 20, 2014



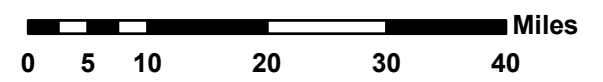
Access Management Categories*

- 1 High-Priority IRCs**
- 2 Medium-Priority IRCs
- 3 High-Priority RCs***
- 4 Principal Arterials
- 5 Minor Arterials
- 6 Collectors
- 7 Specific Plan

*Access Management Categories do not correspond to roadway functional classifications despite similar nomenclature. Certain roadway segments have been classified at 'higher' access management categories based on surrounding land use and roadway conditions. See Chapter 2 of the Access Management Manual for more information on access management categories: <http://www.dot.state.mn.us/accessmanagement/pdf/manualchapters/chapter2.pdf>

For more information on roadway functional classification, other FHWA roadway categories, and downloadable data files: <http://www.dot.state.mn.us/roadway/data/fhwa-categories.html>

**IRC - Interregional Corridor
***RC - Regional Corridor



MnDOT Office of Transportation
System Management
Source: 2004 TIS data and
Access Management Database