







Fast Forward 70 Years...

- U.S. Forest Service and Lake County proposed project
- Designated Forest Highway Funds to be used on a State Highway – First time ever

Standards of Today

- Rural two-lane highway
- 50-70 mph design speed
- Minimum 1:4 inslopes
- Minimum 1:3 backslopes
- Minimum 6-foot shoulder

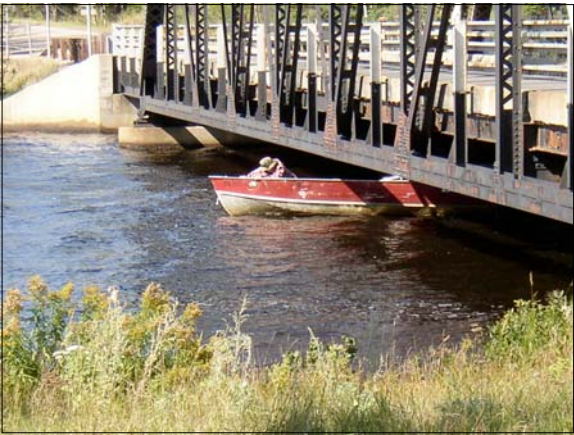














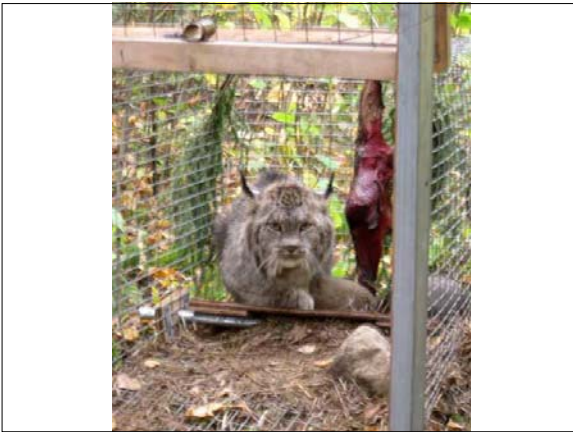
Design Standard

- Natural Preservation Route Standards
 - <http://www.revisor.leg.state.mn.us/arule/8820>
- Established a **vision** of what the road could be

42 Primary Issues

- The most notable are...





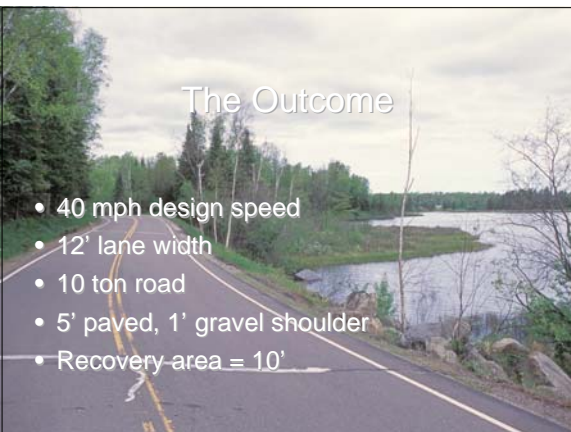


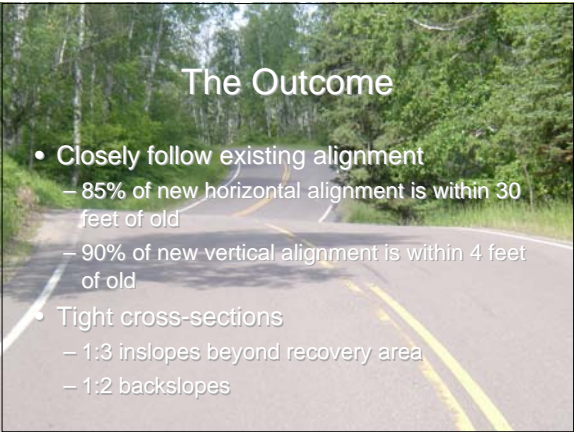




And Some of them Heated...

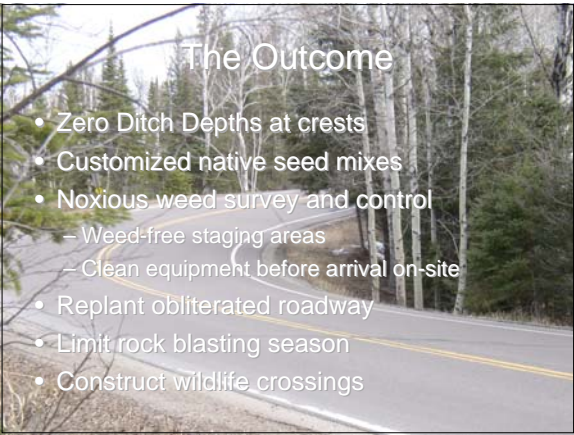
- Right-sizing the project
- Crash rate and severity, or a lack thereof - **SAFETY**
- Noxious Weeds and ATVs
- Clear zone width and slope
- Seed Mix
- Bicycle Use
- Driver Experience





The Outcome

- Closely follow existing alignment
 - 85% of new horizontal alignment is within 30 feet of old
 - 90% of new vertical alignment is within 4 feet of old
- Tight cross-sections
 - 1:3 inslopes beyond recovery area
 - 1:2 backslopes



The Outcome

- Zero Ditch Depths at crests
- Customized native seed mixes
- Noxious weed survey and control
 - Weed-free staging areas
 - Clean equipment before arrival on-site
- Replant obliterated roadway
- Limit rock blasting season
- Construct wildlife crossings

Process to get to Outcome

- Project Team
 - Agency Involvement
 - Local Advisory Committee
 - The Public
- Communication
- Find Precedents
- Persistence
- Documentation



Local Advisory Committee Representation

- Chamber of Commerce
- Area Home Group
- Loggers
- Tribes
- Area Residents
- Environmentalists
- City, Township, & County
- U.S. Forest Service
- Mn/DOT

Highway 1 Reconstruction
From the Keweenaw River Bridge to County Road 2

Welcome to the Highway 1 Reconstruction Project Web Site.



Environmental Assessment Process is completed

On February 28, 2005, the Federal Highway Administration (FHWA) signed the Finding of No Significant Impact (FONSI) for the Highway 1 reconstruction project. This signed document concludes the environmental process.

All of the documents that make up the Findings of Facts and Conclusions and the associated submittal and approval letters are available on this website:
www.dot.state.mn.us/d1/projects/hwy1/environment.html

Thank you for your interest.

PUBLIC HEARING SET TO DISCUSS ENVIRONMENTAL ASSESSMENT FOR RECONSTRUCTING A PORTION OF HIGHWAY 1 SOUTH OF ELY

The Minnesota Department of Transportation (Mn/DOT) is proposing to reconstruct about 15 miles of Highway 1, south of Ely, from the Keweenaw River in Fall Lake Township to Lake

Communication

- Web Site
- E-Mail mailing list
- Snail Mail mailing list





Persistence

- This is the toughest part...

Documentation

- The Environmental Assessment
- Written in the agency concurrence letters
- Listed in the cover letter (signed by the District Engineer to the FHWA) submitting the Findings Package
- Posted on the PROJECT'S WEB SITE and in the MEDIA – make it public

