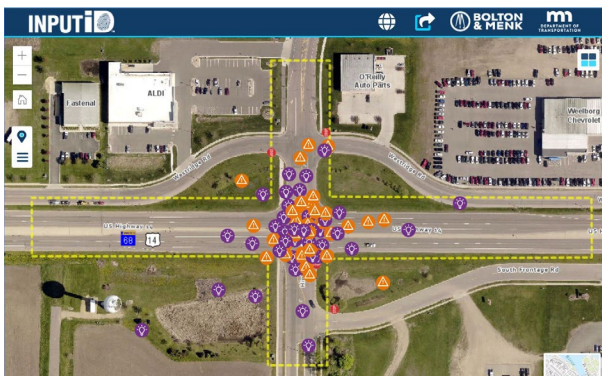


Feedback Summary

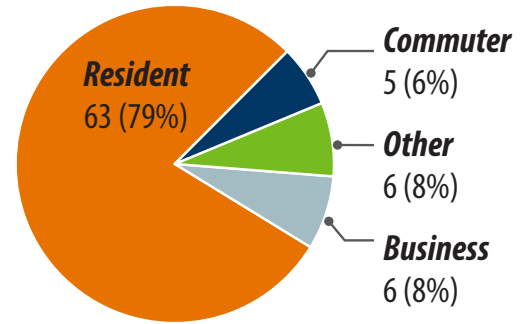
An online comment mapping tool, INPUTiD™, was used to collect input about the Highway 14 and Highland Avenue intersection. Comments and interactions were collected April 14 through May 1, 2020.



A total of 71 people submitted 80 comments. The comments generated 131 replies. Participants could also like/dislike comments. Below are common themes represented by the comments. Larger text size corresponds to more frequently mentioned themes.

Response categories

What is your relationship to the study?



Topics of concern and number of times mentioned in comments.

COMMENT TOPIC	# MENTIONS
Traffic flow	21
Traffic safety	6
Pedestrian and bicyclist safety	5
Traffic travels too fast	3
Poor intersection design	3

Common themes

Issues

Crossing difficult for pedestrians and bicyclists

Highland Ave lanes not aligned across highway

Jake braking noise

Traffic backups in commercial area

Poor intersection lighting

Difficult to cross or turn left onto highway

Speed limit too high

High traffic volumes

Poor sight lines

Inexperienced high school drivers

Long vehicle wait times at intersection

Opportunities

Consider adding traffic control at intersection

Consider adding features to improve pedestrian and bicyclist crossing.