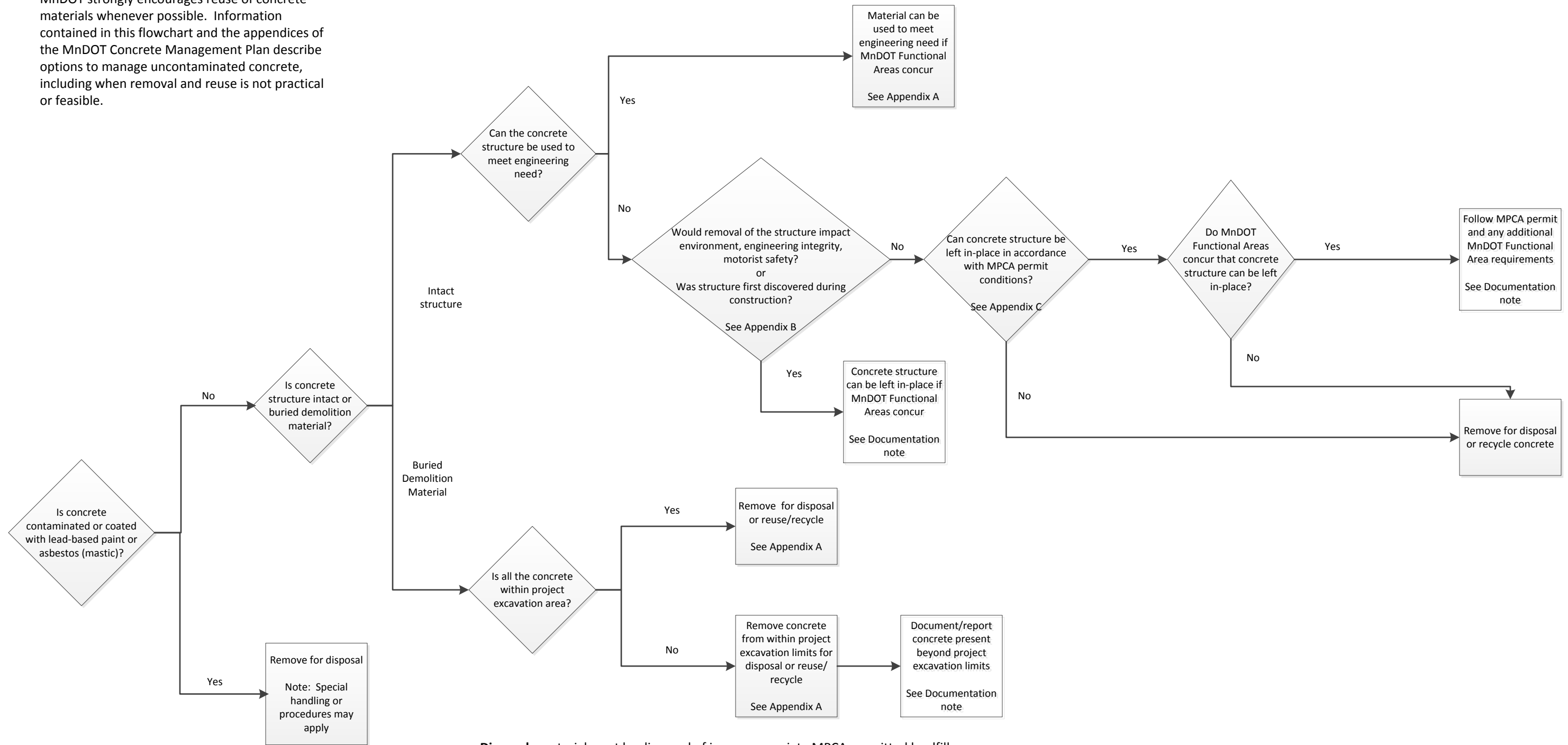


# Management of Concrete Pavement, Structures and Debris on MnDOT Projects

## Management Philosophy

MnDOT strongly encourages reuse of concrete materials whenever possible. Information contained in this flowchart and the appendices of the MnDOT Concrete Management Plan describe options to manage uncontaminated concrete, including when removal and reuse is not practical or feasible.



## Definitions

**Contaminated:** concrete has chemical staining or is adjacent to contaminated soil. The MPCA understands that there may be some de minimus staining on concrete that would reasonably not result in removal of the concrete from the “uncontaminated” category. The MPCA has chosen not to be prescriptive in addressing the size of the staining. If the MPCA finds that this criteria is being abused, the General Permit will be terminated. Contact OES for assistance in determining if concrete should be considered contaminated or not.  
**Demolition Material:** this is buried broken concrete discovered on a MnDOT project.

**Disposal:** material must be disposed of in an appropriate MPCA permitted landfill  
**MnDOT Functional Areas:** Construction, Utilities, Maintenance, Bridge, Hydraulics, Materials, Environmental Stewardship must concur with concrete being left in-place  
**Reuse/Recycle:** concrete may be recycled in accordance with beneficial use determination (see Appendix A)  
**Meet Engineering need:** refer to beneficial use determination (see Appendix A)  
 Affect structural integrity or impact motorist safety: see Appendix B  
**MPCA Permit:** Uncontaminated Concrete Disposal Permit – Appendix C contains the MPCA permit  
**Structure first discovered during construction:** structures whose existences were not known before construction commenced and were discovered during construction activities.

## Documentation Note

Structures left in-place must be documented in as-built plans or red-lined plan sheets and retained in District files. This documentation is needed to comply with MPCA requirements and to provide necessary information for future highway projects, Permits work and Maintenance Operations.