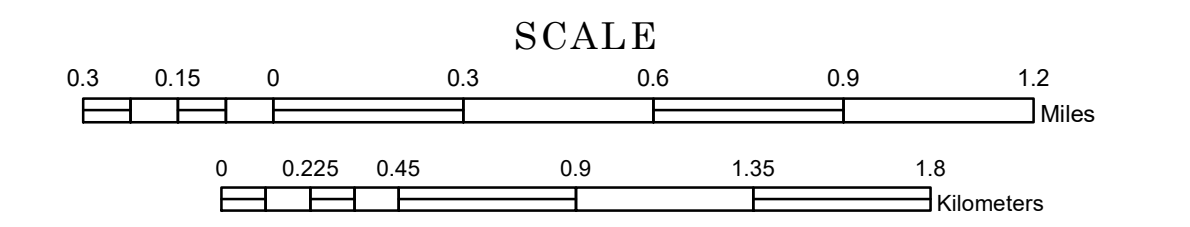


# MUNICIPALITY OF CAMBRIDGE

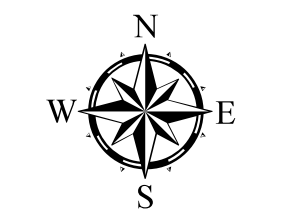
PREPARED BY THE  
MINNESOTA DEPARTMENT OF TRANSPORTATION  
OFFICE OF TRANSPORTATION SYSTEM MANAGEMENT

IN COOPERATION WITH  
U.S. DEPARTMENT OF TRANSPORTATION  
FEDERAL HIGHWAY ADMINISTRATION

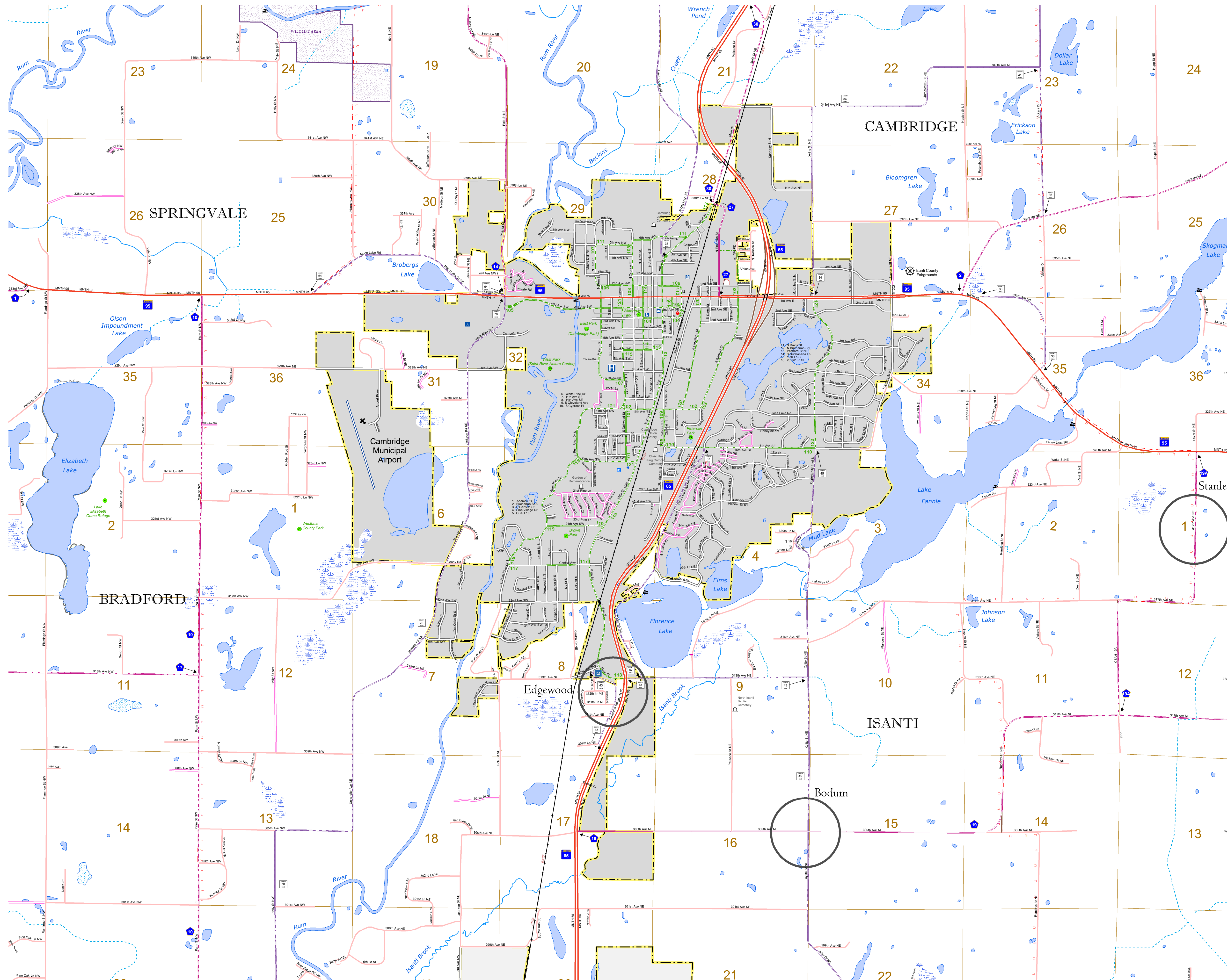


1 in = 1,600 ft  
**2023**

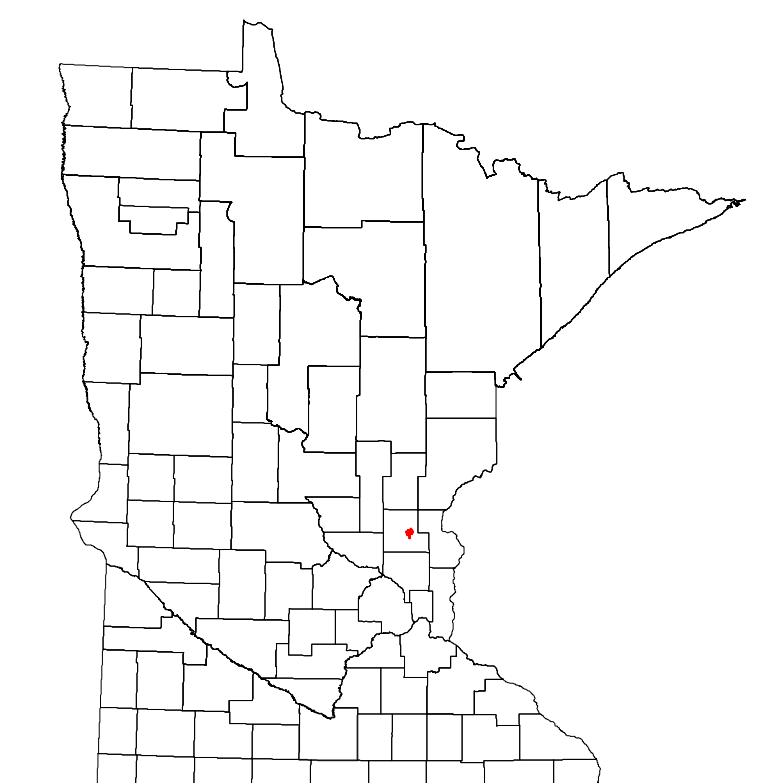
Projection:  
Transverse Mercator  
NAD 1986  
UTM Zone 15



North American Datum  
of 1986



ROAD AND ROADWAY FEATURES	PUBLIC SERVICE FEATURES
INTERSTATE	MINIOT OFFICE
US HIGHWAY	MINIOT TRUCK STATION
MIN HIGHWAY	HIGHWAY PATROL DISTRICT OFFICE
COUNTY STATE AID HIGHWAY	STATE TRAVEL INFORMATION CENTER
COUNTY ROAD	REST AREA (FULL SERVICE)
MUNICIPAL STREET	REST AREA (VAULT TRAILS)
MUNICIPAL STATE AID STREET	WAYSIDE (VAULT OR PIT TOLLS)
PRIVATE STREET/ROAD	PUBLIC ACCESS POINT
TOWNSHIP ROAD	LOCAL PARK
UNORGANIZED TERRITORY ROAD	FAIRGROUNDS
RAMP OR CONNECTOR	PORT OF ENTRY
INTERSTATE EXIT	PARK AND RIDE LOT
GREAT RIVER ROAD	PUBLIC UNIVERSITY/COLLEGE
OTHER ROADWAY	PRIVATE UNIVERSITY/COLLEGE
FRONTAGE	ELEMENTARY SCHOOL
LOCAL SERVICE	MIDDLE SCHOOL
MUNICIPAL	HIGH SCHOOL
NATIONAL FOREST	AVIATION FEATURES
STATE FOREST	COMMERCIAL AIRPORT
NATIONAL MONUMENT	GENERAL AIRPORT
STATE FOREST	AIRSTRIP
STATE FOREST	SEAPLANE
STATE FOREST	AIRPORT RUNWAY
STATE FOREST	CULTURAL FEATURES
STATE FOREST	STATE HISTORICAL MARKER
STATE FOREST	HISTORIC DISTRICT
STATE FOREST	HISTORIC SITE
STATE FOREST	MONUMENT
STATE FOREST	CEMETERY
STATE FOREST	BOUNDARY FEATURES
STATE FOREST	TRIAL LAND
STATE FOREST	COUNTY
STATE FOREST	MUNICIPALITY
STATE FOREST	ADJACENT MUNICIPALITY
STATE FOREST	FEDERAL ADJUSTED URBAN AREA (2014)
STATE FOREST	MILITARY
STATE FOREST	STATE PARK
STATE FOREST	NATIONAL FOREST
STATE FOREST	NATIONAL AND STATE FOREST
STATE FOREST	STATE FOREST
STATE FOREST	NATIONAL TRAIL
STATE FOREST	WILDLIFE REFUGUE AREA
STATE FOREST	WILDLIFE MANAGEMENT AREA
STATE FOREST	HYDROLOGIC FEATURES
STATE FOREST	RIVER OR STREAM (PERENNIAL)
STATE FOREST	LAKE, POND OR RESERVOIR
STATE FOREST	STREAM (INTERMITTENT)
STATE FOREST	FRANKING DITCH
STATE FOREST	WETLAND
STATE FOREST	ISLAND OR LAND
STATE FOREST	REGIONAL WATERSHED
STATE FOREST	PUBLIC FACILITIES
STATE FOREST	FEDERAL CAPITOL
STATE FOREST	STATE COURTHOUSE
STATE FOREST	COUNTY COURTHOUSE
STATE FOREST	ARMORY
STATE FOREST	CITY HALL
STATE FOREST	TOWN HALL
STATE FOREST	COMMUNITY CENTER
STATE FOREST	ARENA
STATE FOREST	STADIUM
STATE FOREST	POST OFFICE
STATE FOREST	POLICE STATION
STATE FOREST	FIRE STATION
STATE FOREST	PUBLIC LIBRARY
STATE FOREST	PUBLIC MUSEUM
STATE FOREST	EVENT CENTER
STATE FOREST	CITY CENTERS
STATE FOREST	TRIAL GOVERNMENT CENTER
STATE FOREST	CITY CENTER
STATE FOREST	LOCALLY KNOWN PLACE
STATE FOREST	UNINCORPORATED COMMUNITY



Population (U.S. Census 2020): 9,611

To request information from this document in an alternative format, call 651-366-4718 or 1-800-657-3774 (Greater Minnesota); 711 or 1-800-627-3529 (Minnesota Relay). You may also send an e-mail to ADarequest.dot@state.mn.us. (Please request at least one week in advance.)

LAST EDITED ON 1-29-2024