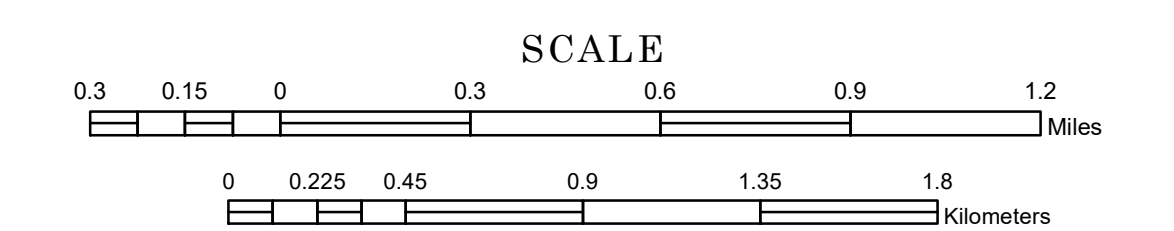


# MUNICIPALITY OF NEW ULM

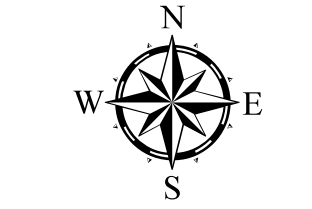
PREPARED BY THE  
MINNESOTA DEPARTMENT OF TRANSPORTATION  
OFFICE OF TRANSPORTATION SYSTEM MANAGEMENT

IN COOPERATION WITH  
U.S. DEPARTMENT OF TRANSPORTATION  
FEDERAL HIGHWAY ADMINISTRATION

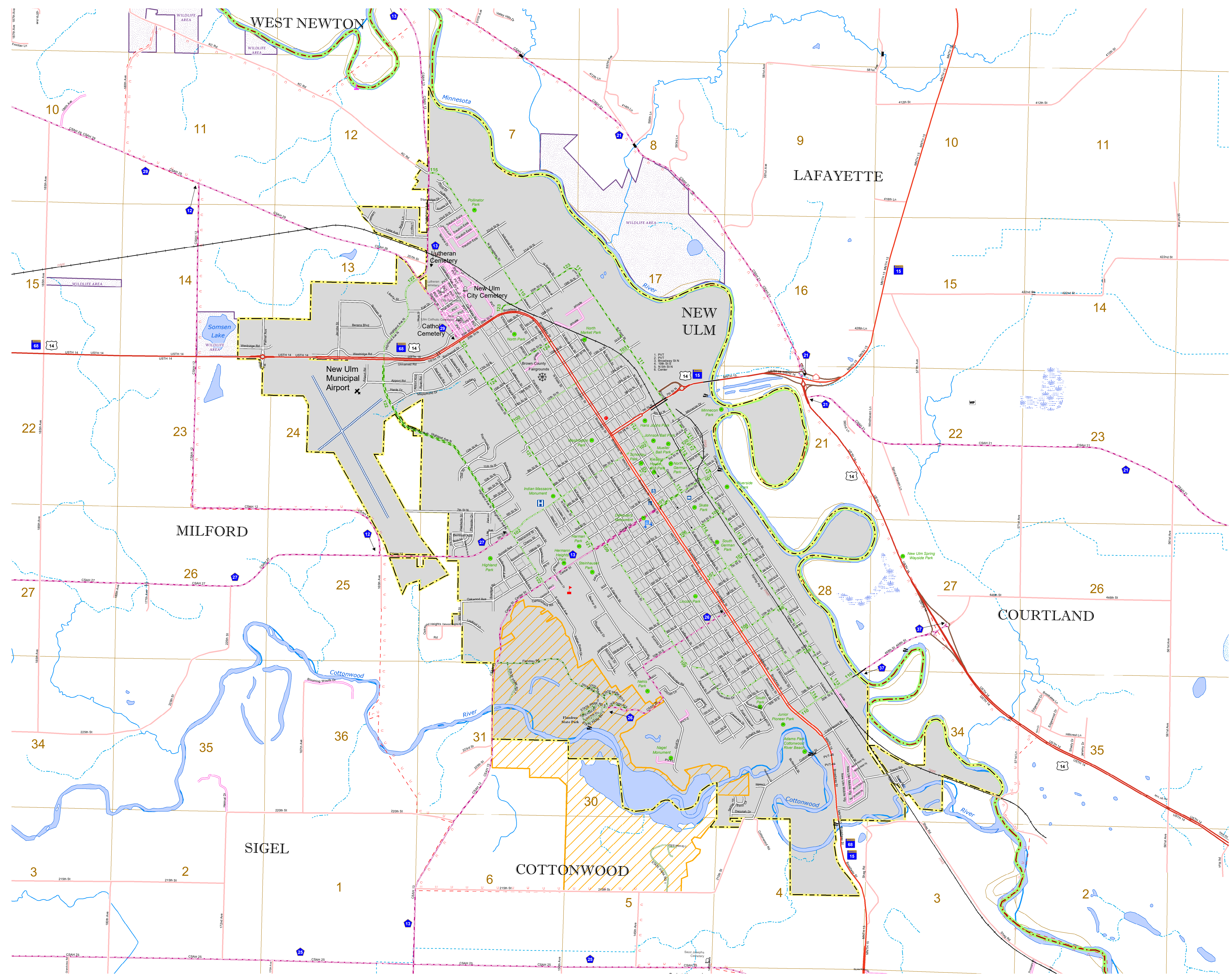


2024

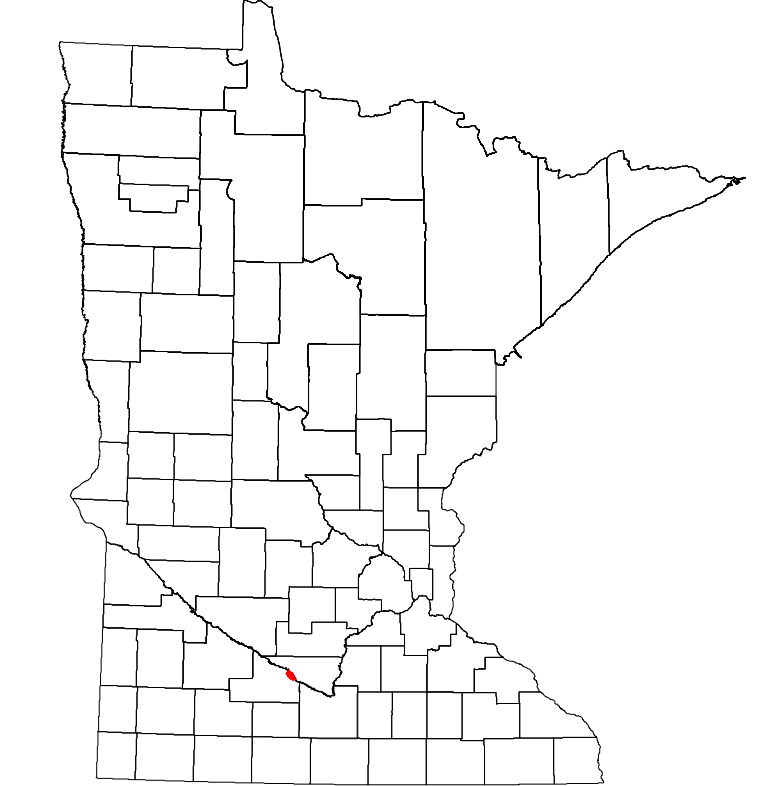
Projection:  
Transverse Mercator  
NAD 1986  
UTM Zone 15



North American Datum  
of 1986



ROAD AND ROADWAY FEATURES	PUBLIC SERVICE FEATURES
INTERSTATE	MINOT OFFICE
US HIGHWAY	MINOT TRUCK STATION
MIN HIGHWAY	HIGHWAY PATROL DISTRICT OFFICE
COUNTY STATE AID HIGHWAY	STATE TRAVEL INFORMATION CENTER
COUNTY ROAD	REST AREA (FULL SERVICE)
MUNICIPAL STREET	REST AREA (VAULT TRAILS)
MUNICIPAL STATE AID STREET	WAYSIDE (VAULT OR PIT TRAILS)
PRIVATE STREET/ROAD	PUBLIC ACCESS POINT
TOWNSHIP ROAD	LOCAL PARK
UNORGANIZED TERRITORY ROAD	FAIRGROUNDS
RAMP OR CONNECTOR	PORT OF ENTRY
INTERSTATE EXIT	PARK AND RIDE LOT
GREAT RIVER ROAD	PUBLIC UNIVERSITY/COLLEGE
OTHER ROAD	PRIVATE UNIVERSITY/COLLEGE
FRONTAGE	MIDDLE SCHOOL
LOCAL SERVICE	HIGH SCHOOL
MUNICIPAL	
NATIONAL FOREST	
NATIONAL WILDLIFE	
STATE CARE	
RAILROAD AND RAILWAY FEATURES	AVIATION FEATURES
EMPIRE BUILDER STATION (AMTRAK)	COMMERCIAL AIRPORT
NORTHSTAR STATION (COMMUTER)	GENERAL AIRPORT
LIGHT RAIL	AIRSTRIP
BLUE LINE STATION	SEAPLANE
GREEN LINE STATION	AIRPORT RUNWAY
INFRASTRUCTURE FEATURES	CULTURAL FEATURES
LONG BRIDGE (100' OR GREATER SPAN)	STATE HISTORICAL MARKER
MAJOR BRIDGE (20' TO 100' SPAN)	HISTORIC DISTRICT
MINOR BRIDGE (5' TO 20' SPAN)	HISTORIC SITE
ROAD TUNNEL (100' OR GREATER SPAN)	MONUMENT
RAILROAD BRIDGE (100' OR GREATER SPAN)	CEMETERY
RAILROAD BRIDGE (UNDER 100' SPAN)	
SKYWAY	
PEDESTRIAN BRIDGE	
PEDESTRIAN TUNNEL	
DAM	
LOCK AND DAM	
PUBLIC FACILITIES	BOUNDARY FEATURES
STATE CAPITOL	TRIAL LAND
FEDERAL COURTHOUSE	COUNTY
COUNTY COURTHOUSE	MUNICIPALITY
ARMORY	ADJACENT MUNICIPALITY
CITY HALL	FEDERAL ADJUSTED URBAN AREA (2014)
TOWN HALL	STATE PARK
COMMUNITY CENTER	NATIONAL PARK
ARENA	NATIONAL FOREST
STADIUM	NATIONAL AND STATE FOREST
POST OFFICE	STATE FOREST
POLICE STATION	NATIONAL TRAIL
FIRE STATION	WILDLIFE REFUGUE AREA
PUBLIC LIBRARY	WILDLIFE MANAGEMENT AREA
PUBLIC MUSEUM	
EVENT CENTER	
CITY CENTERS	HYDROLOGIC FEATURES
TRIAL GOVERNMENT CENTER	RIVER OR STREAM (PERMANENT)
CITY CENTER	LAKE, POND OR RESERVOIR
LOCALLY KNOWN PLACE	STREAM (INTERMITTENT)
UNINCORPORATED COMMUNITY	DRAINAGE DITCH
	WETLAND
	ISLAND OR LAND
	REGIONAL WATERSHED



To request information from this document in an alternative format, call 651-366-4718 or 1-800-657-3774 (Greater Minnesota); 711 or 1-800-627-3529 (Minnesota Relay). You may also send an e-mail to ADArequest.dot@state.mn.us. (Please request at least one week in advance.)

LAST EDITED ON 6-10-2024

Population (U.S. Census 2020): 14,120