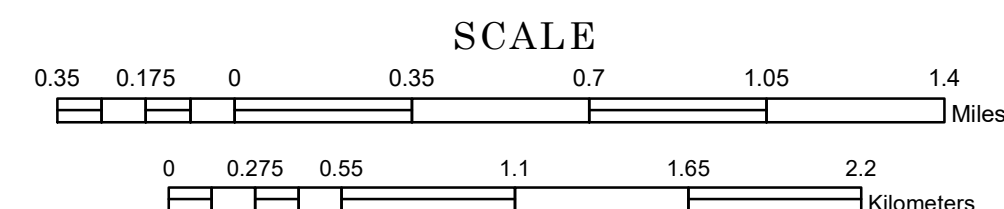


# MUNICIPALITY OF SHAKOPEE

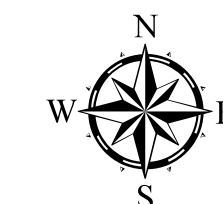
PREPARED BY THE  
MINNESOTA DEPARTMENT OF TRANSPORTATION  
OFFICE OF TRANSPORTATION SYSTEM MANAGEMENT

IN COOPERATION WITH  
U.S. DEPARTMENT OF TRANSPORTATION  
FEDERAL HIGHWAY ADMINISTRATION

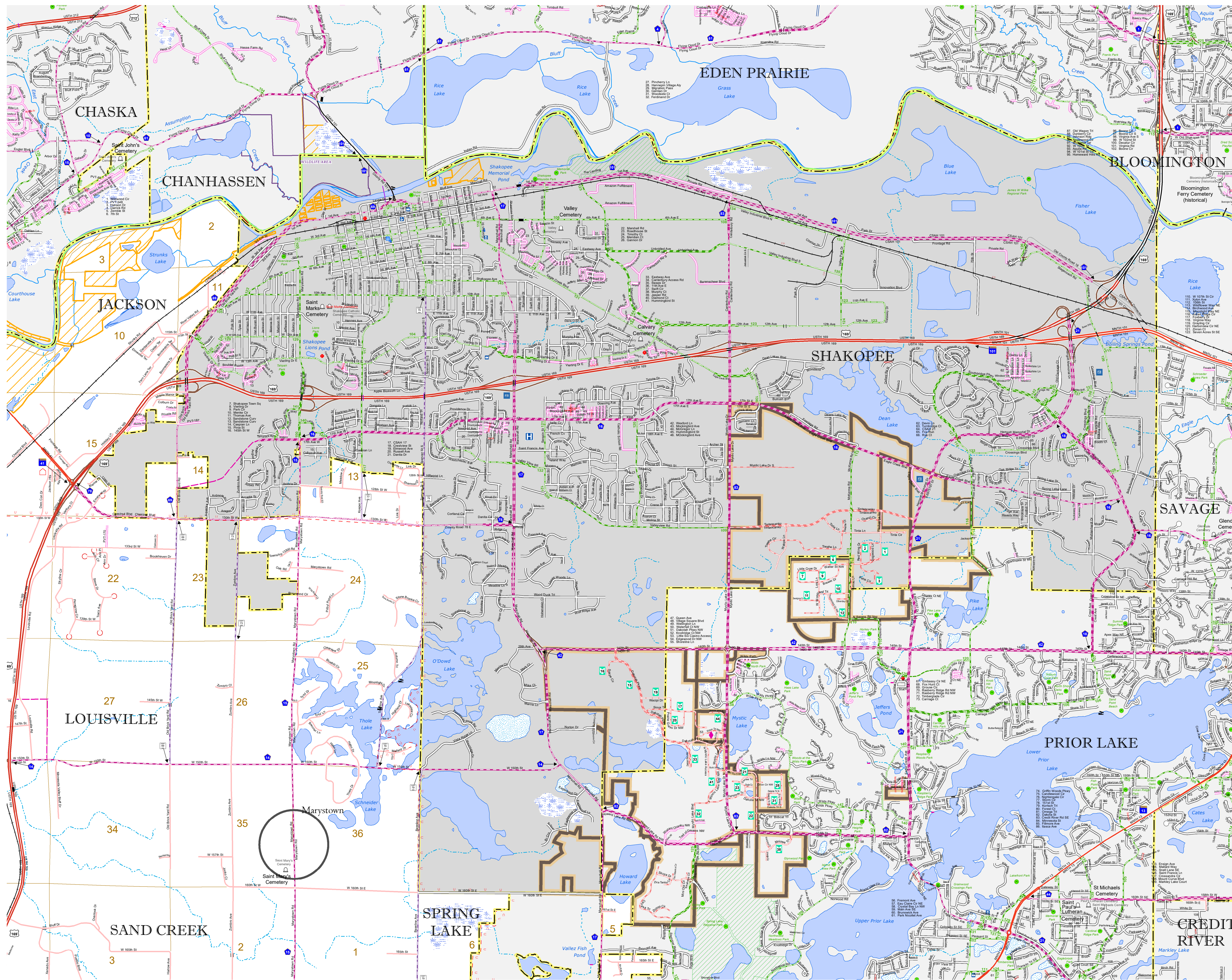


1 in = 2,000 ft  
**2024**

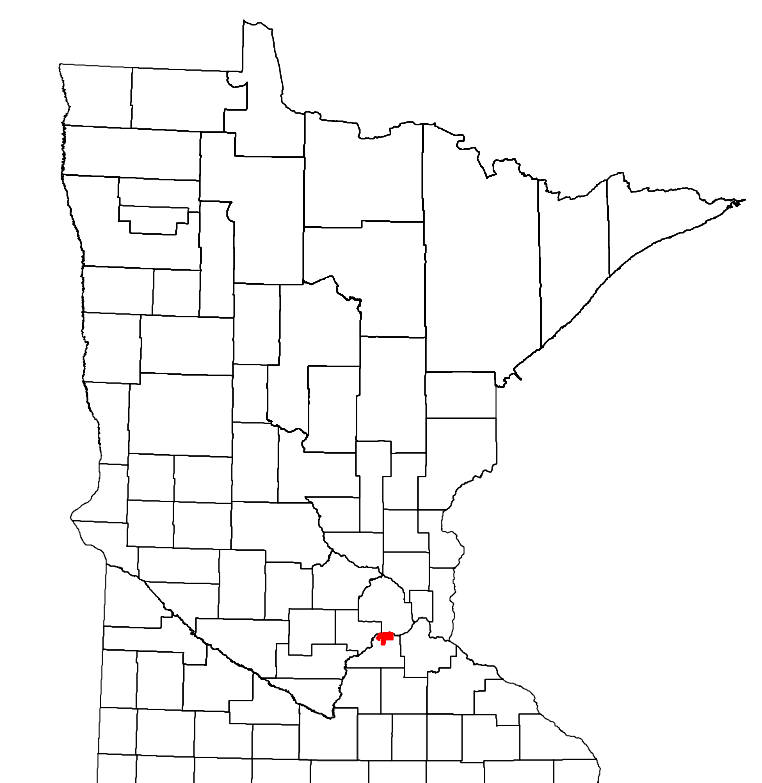
Projection:  
Transverse Mercator  
NAD 1986  
UTM Zone 15



North American Datum  
of 1986



ROAD AND ROADWAY FEATURES	PUBLIC SERVICE FEATURES
INTERSTATE	MINIOT OFFICE
US HIGHWAY	MINIOT TRUCK STATION
MIN HIGHWAY	HIGHWAY PATROL DISTRICT OFFICE
COUNTY STATE AID HIGHWAY	STATE TRAVEL INFORMATION CENTER
COUNTY ROAD	REST AREA (FULL SERVICE)
MUNICIPAL STREET	REST AREA (VAULT TRAILS)
MUNICIPAL STATE AID STREET	WAYSIDE (WAIT OR PIT TRAIL)
PRIVATE STREET/ROAD	PUBLIC ACCESS POINT
TOWNSHIP ROAD	LOCAL PARK
UNORGANIZED TERRITORY ROAD	PARKGROUNDS
RAMP OR CONNECTOR	PORT OF ENTRY
INTERSTATE EXIT	PARK AND RIDE LOT
GREAT RIVER ROAD	PUBLIC UNIVERSITY/COLLEGE
OTHER ROAD	PRIVATE UNIVERSITY/COLLEGE
RAILROAD AND RAILWAY FEATURES	AVIATION FEATURES
EMPIRE BUILDER STATION (AMTRAK)	COMMERCIAL AIRPORT
NORTHSTAR STATION (COMMUTER)	GENERAL AIRPORT
LIGHT RAIL	AIRSTRIP
BLUE LINE STATION	SEAPLANE
GREEN LINE STATION	AIRPORT RUNWAY
INFRASTRUCTURE FEATURES	CULTURAL FEATURES
LONG BRIDGE (100' OR GREATER SPAN)	STATE HISTORICAL MARKER
MAJOR BRIDGE (20' TO 100' SPAN)	HISTORIC DISTRICT
MINOR BRIDGE (5' TO 20' SPAN)	HISTORIC SITE
ROAD TUNNEL (100' OR GREATER SPAN)	MONUMENT
RAILROAD BRIDGE (100' OR GREATER SPAN)	CEMETERY
RAILROAD BRIDGE (UNDER 100' SPAN)	BOUNDARY FEATURES
BOATWAY	TRIBAL LAND
PEDESTRIAN BRIDGE	COUNTY
PEDESTRIAN TUNNEL	MUNICIPALITY
DAM	ADJACENT MUNICIPALITY
LOCK AND DAM	FEDERAL ADJUSTED URBAN AREA (2014)
PUBLIC FACILITIES	MILITARY
STATE CAPITOL	STATE PARK
FEDERAL COURTHOUSE	REGIONAL PARK
COUNTY COURTHOUSE	NATIONAL FOREST
CITY HALL	NATIONAL AND STATE FOREST
TOWN HALL	STATE FOREST
COMALUNITY CENTER	NATIONAL TRAIL
ARENA	NATIONAL TRAIL
STADIUM	WILDLIFE REFUGE AREA
POST OFFICE	WILDLIFE MANAGEMENT AREA
POLICE STATION	HYDROLOGIC FEATURES
FIRE STATION	RIVER OR STREAM (PERENNIAL)
PUBLIC LIBRARY	LAKE, POND OR RESERVOIR
PUBLIC MUSEUM	STREAM (INTERMITTENT)
EVENT CENTER	DRAINAGE DITCH
CITY CENTERS	WETLAND
TRIBAL GOVERNMENT CENTER	ISLAND OR LAND
CITY CENTER	REGIONAL WATERSHED
LOCALLY KNOWN PLACE	
UNINCORPORATED COMMUNITY	



To request information from this document in an alternative format, call 651-366-4718 or 1-800-657-3774 (Greater Minnesota); 711 or 1-800-627-3529 (Minnesota Relay). You may also send an e-mail to ADRequest.dot@state.mn.us. (Please request at least one week in advance.)

LAST EDITED ON 6-10-2024

Population (U.S. Census 2020): 43,698