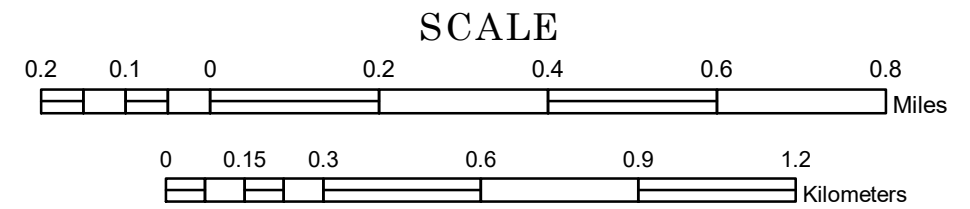


# MUNICIPALITY OF LA CRESCENT

PREPARED BY THE  
MINNESOTA DEPARTMENT OF TRANSPORTATION  
OFFICE OF TRANSPORTATION SYSTEM MANAGEMENT

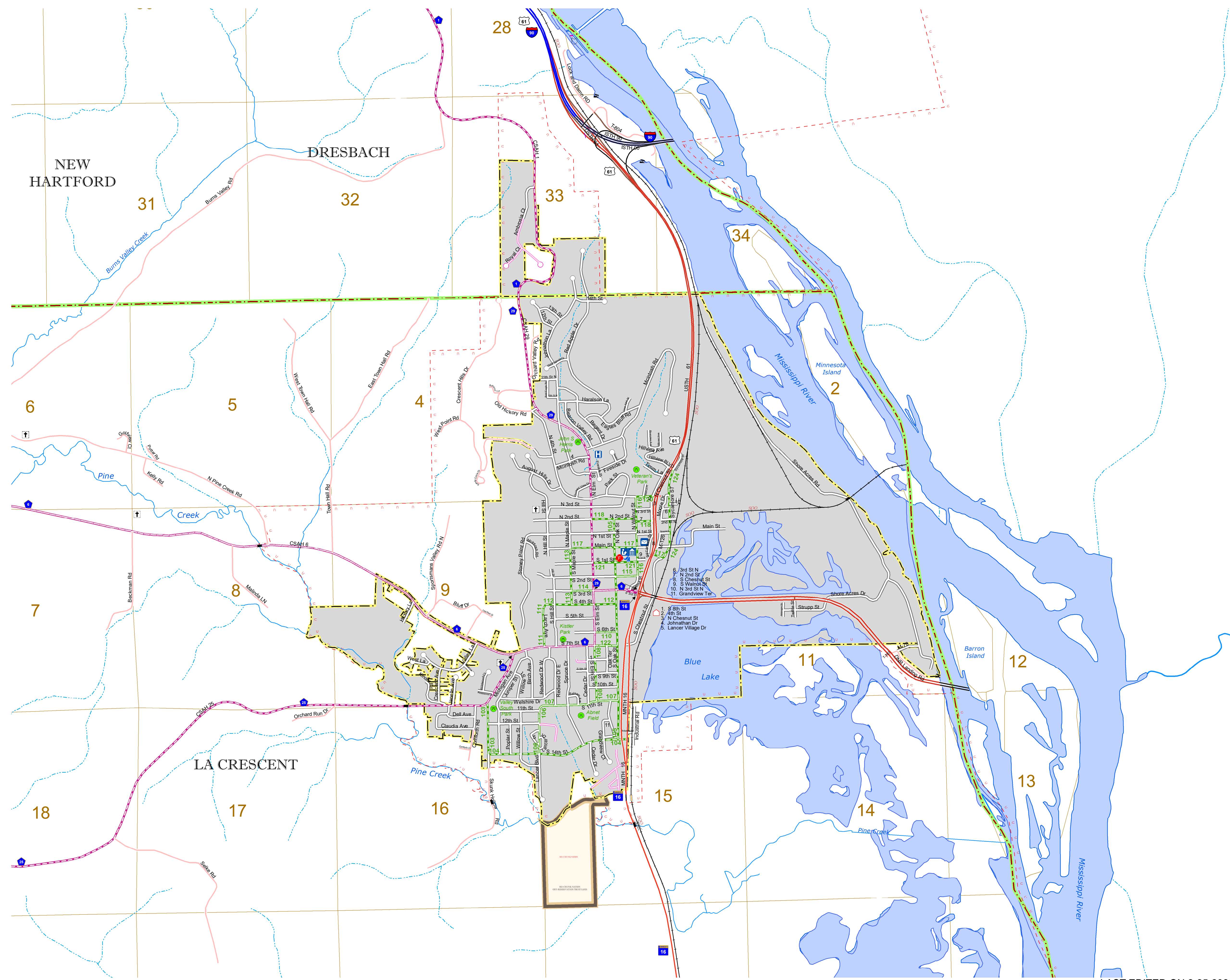
IN COOPERATION WITH  
U.S. DEPARTMENT OF TRANSPORTATION  
FEDERAL HIGHWAY ADMINISTRATION



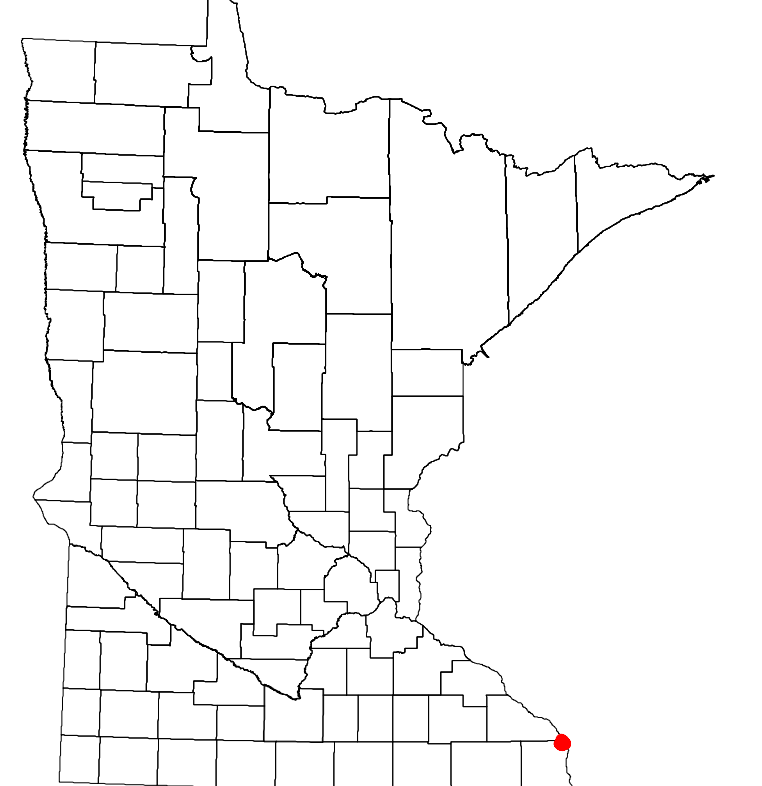
1 in = 1,200 ft  
**2020**

Projection:  
Transverse Mercator  
NAD 1986  
UTM Zone 15

North American Datum  
of 1986



ROAD AND ROADWAY FEATURES	PUBLIC SERVICE FEATURES
INTERSTATE	MINOT OFFICE
US HIGHWAY	MINOT TRUCK STATION
MN HIGHWAY	HIGHWAY PATROL DISTRICT OFFICE
COUNTY STATE AID HIGHWAY	STATE TRAVEL INFORMATION CENTER
COUNTY ROAD	REST AREA (FULL SERVICE)
MUNICIPAL STATE AID STREET	REST AREA (VALET TOILET)
MUNICIPAL STREET	WAYSIDE (VALET OR PIT TOILET)
PRIVATE STREET/ROAD	LOCAL PARK
TOWNSHIP ROAD	PUBLIC ACCESS POINT
UNORGANIZED TERRITORY ROAD	FAIRGROUNDS
RAMP OR CONNECTOR	PORT OF ENTRY
INTERSTATE EXIT	PARK AND RIDE LOT
GREAT RIVER ROAD	PUBLIC UNIVERSITY/COLLEGE
OTHER ROADS	PRIVATE UNIVERSITY/COLLEGE
FRONTAGE ROAD	STATE HISTORICAL MARKER
NON-SERVICE ROAD	CULTURAL FEATURES
MILITARY ROAD	HISTORIC DISTRICT
AVIATION FEATURES	HISTORIC SITE
COMMERCIAL AIRPORT	MONUMENT
GENERAL AIRPORT	BOUNDARY FEATURES
AIRSTRIP	TRIBAL LAND
SEAPLANE	COUNTY
AIRPORT RUNWAY	MUNICIPALITY
RAILROAD AND RAILWAY FEATURES	ADJACENT MUNICIPALITY
RAILROAD	FEDERAL ADJUSTED URBAN AREA (2014)
EMPIRE BUILDER STATION (AIRMAIL)	MILITARY
NORTHWESTAR STATION (COMMUTER)	VOYAGEURS NATIONAL PARK
LIGHT RAIL	BOUNDARY WATERS CANOE AREA WILDERNESS
BLUE LINE	STATE PARK
GREEN LINE	REGIONAL PARK
INFRASTRUCTURE FEATURES	NATIONAL FOREST
LONG BRIDGE (100' OR GREATER SPAN)	NATIONAL AND STATE FOREST
MAJOR BRIDGE (20 TO 100 SPAN)	STATE FOREST
MINOR BRIDGE (5 TO 20 SPAN)	NATIONAL TRAIL
DAM	WILDLIFE REFUGES AREA
LOCK AND DAM	WILDLIFE MANAGEMENT AREA
PUBLIC FACILITIES	HYDROLOGIC FEATURES
STATE CAPITOL	RIVER OR STREAM (PERMANENT)
FEDERAL COURTHOUSE	LAKE, POND OR RESERVOIR
COUNTY COURTHOUSE	STREAM (INTERMITTENT)
ARMORY	DRAINAGE DITCH
CITY CENTERS	WETLAND
TRIBAL GOVERNMENT CENTER	ISLAND OR LAND
CITY CENTER	REGIONAL WATERSHED
LOCALLY KNOWN PLACE	
UNINCORPORATED COMMUNITY	



To request information from this document in an alternative format, call 651-366-4718 or 1-800-657-3774 (Greater Minnesota); 711 or 1-800-627-3529 (Minnesota Relay). You may also send an e-mail to ADArequest.dot@state.mn.us. (Please request at least one week in advance.)

LAST EDITED ON 2-25-2020

Population (U.S. Census 2010): 4830