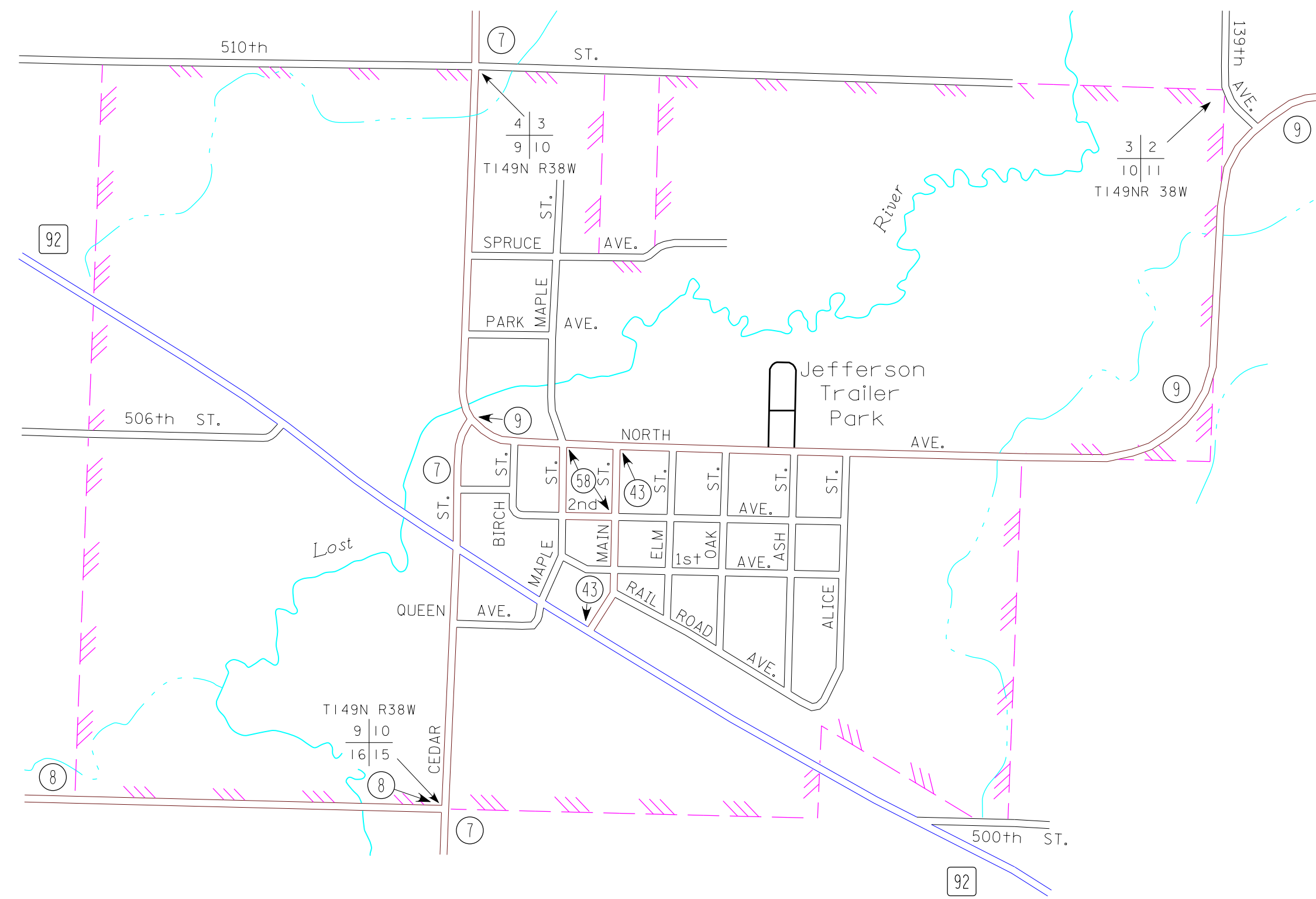
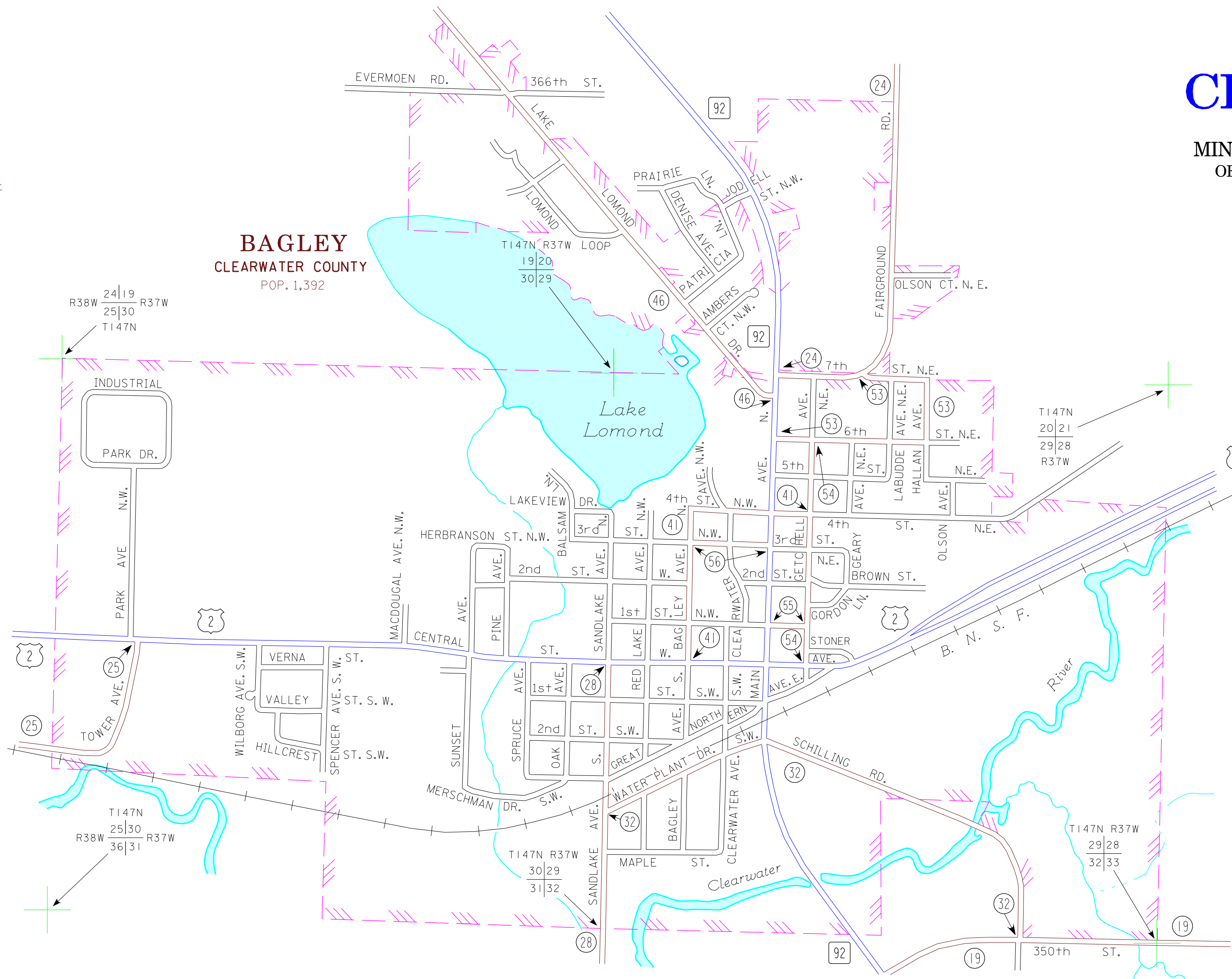


GONVICK
CLEARWATER COUNTY
POP. 282

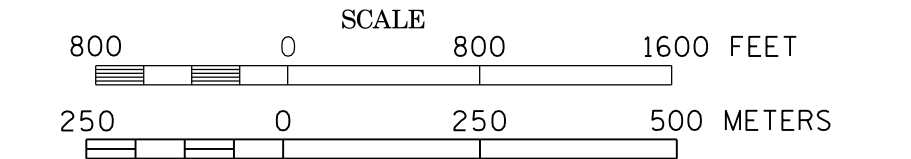


BAGLEY
CLEARWATER COUNTY
POP. 1,392

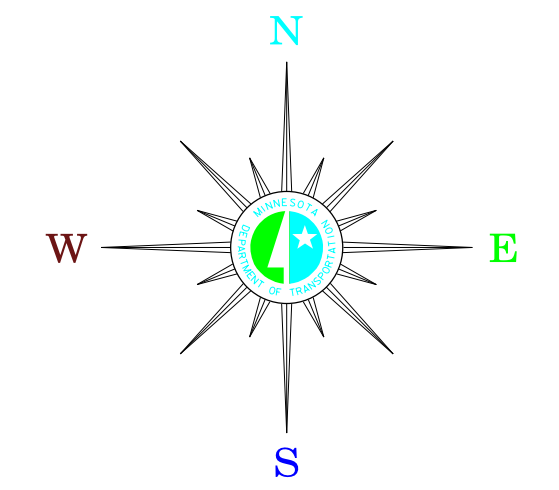


MUNICIPALITIES OF
CLEARWATER CO.

PREPARED BY THE
MINNESOTA DEPARTMENT OF TRANSPORTATION
OFFICE OF TRANSPORTATION SYSTEM MANAGEMENT
IN COOPERATION WITH
U.S. DEPARTMENT OF TRANSPORTATION
FEDERAL HIGHWAY ADMINISTRATION



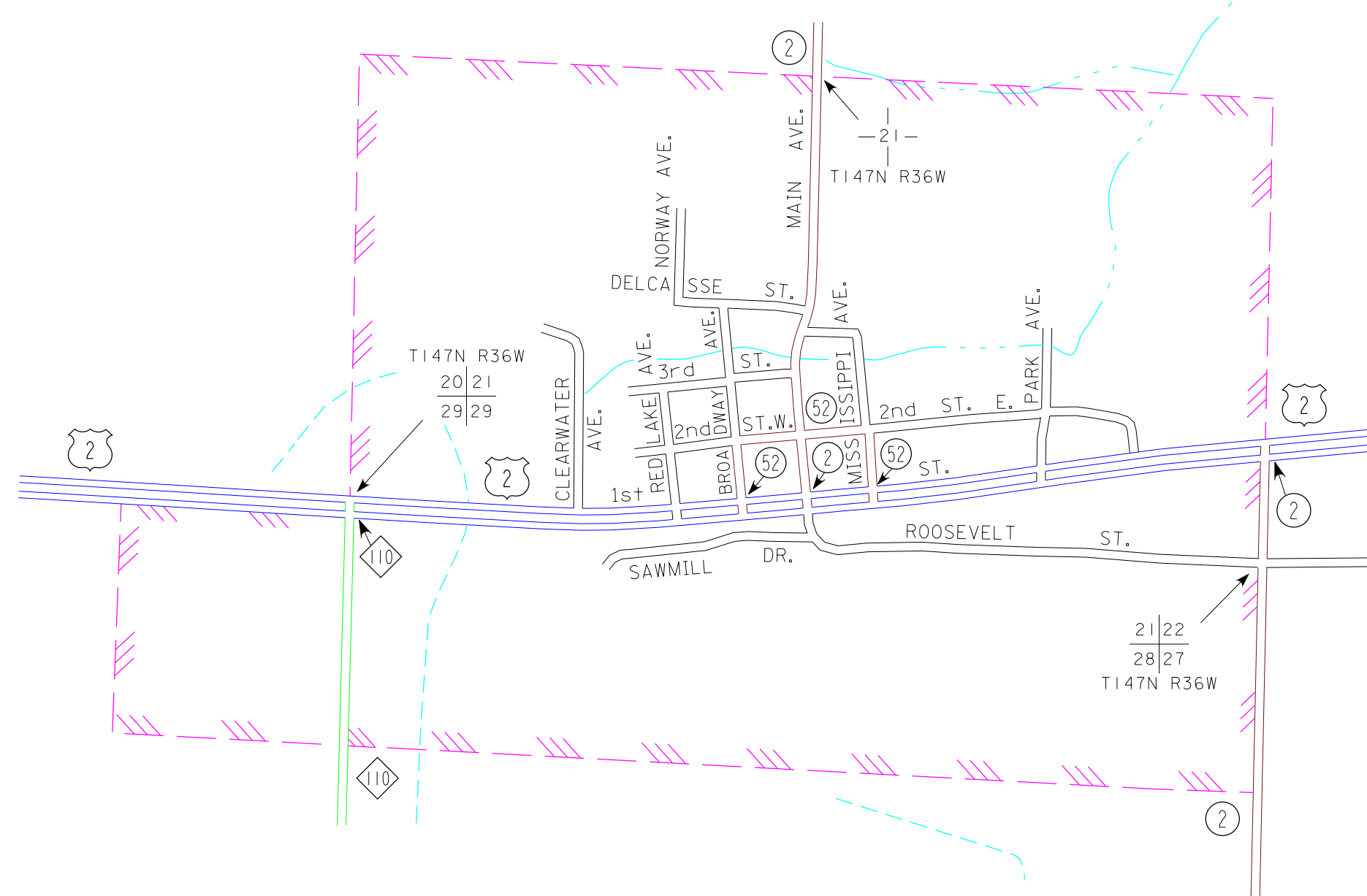
2015
BASIC DATA - 2013



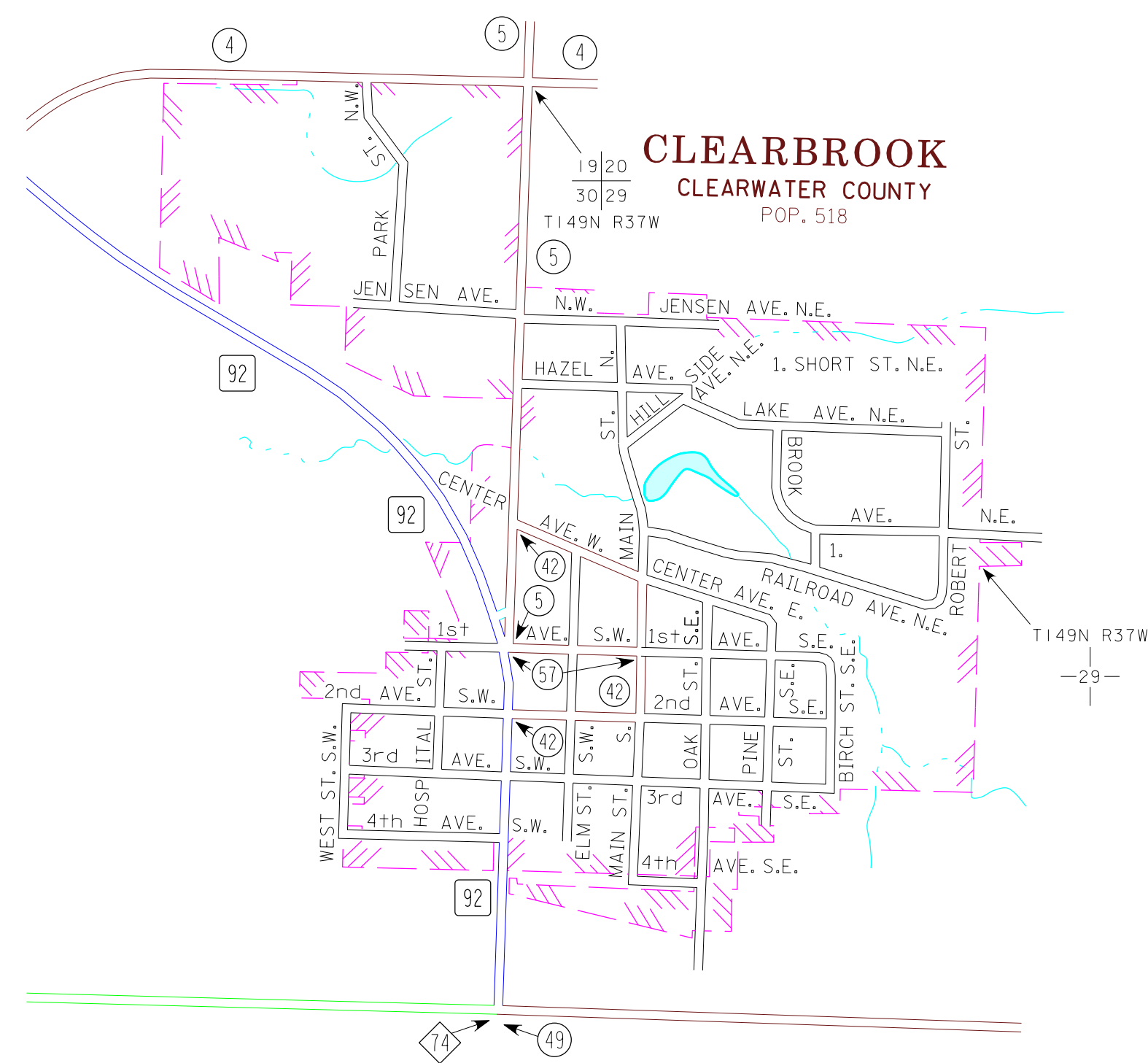
LEGEND

- INTERSTATE TRUNK HIGHWAY..... (I-95)
- U.S. TRUNK HIGHWAY..... (168)
- STATE TRUNK HIGHWAY..... (55)
- COUNTY STATE AID HIGHWAY..... (23)
- COUNTY ROAD..... (49)
- PUBLIC ROAD.....
- PRIVATE ROAD.....
- CORPORATE LIMITS.....

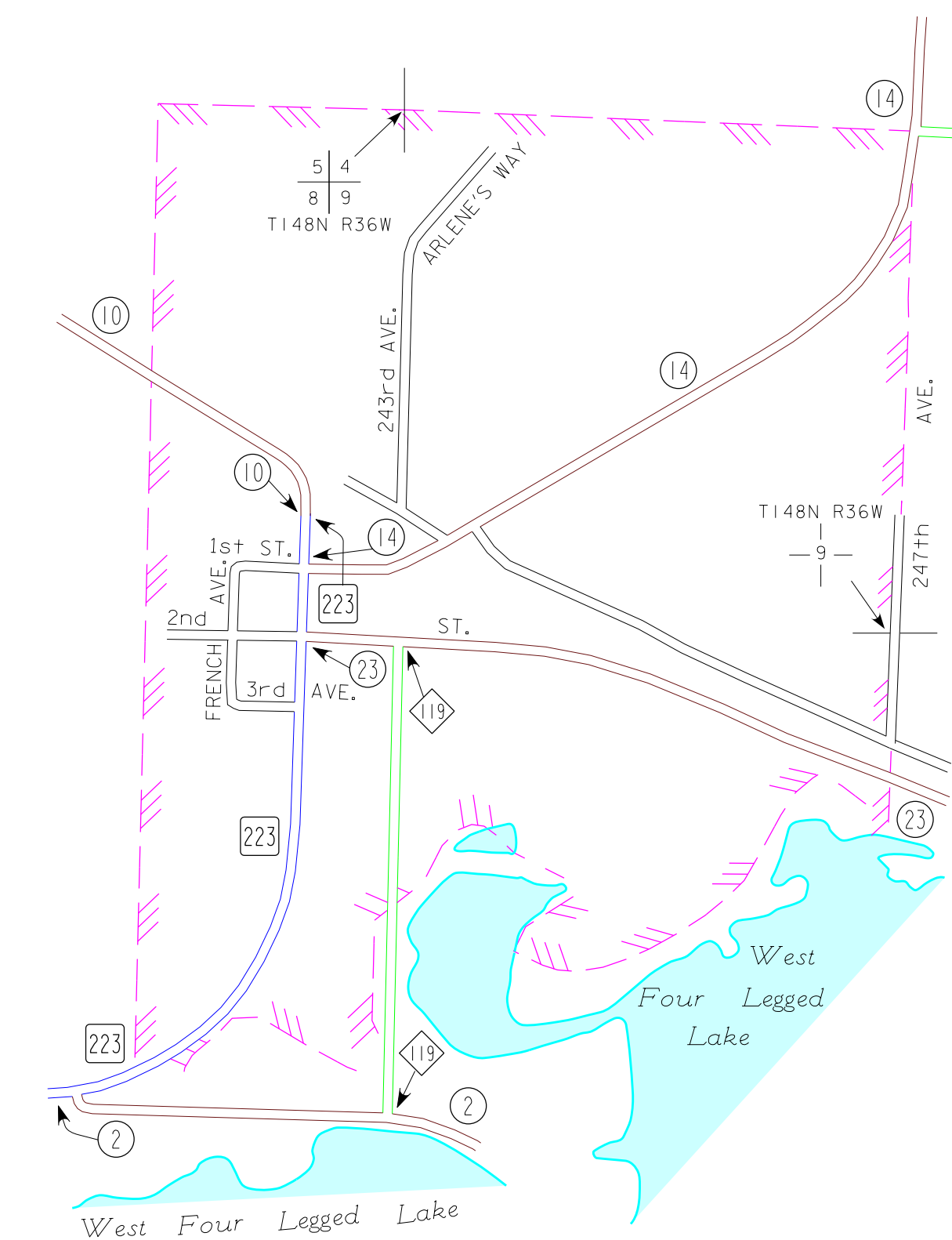
SHEVLIN
CLEARWATER COUNTY
POP. 176



CLEARBROOK
CLEARWATER COUNTY
POP. 518



LEONARD
CLEARWATER COUNTY
POP. 41



- MUNICIPALITIES SHOWN
ON THIS SHEET
- BAGLEY
 - CLEARBROOK
 - GONVICK
 - LEONARD
 - SHEVLIN

To request information from this document in an alternative format, call 651-366-4718 or 1-800-657-3774 (Greater Minnesota); 711 or 1-800-627-3529 (Minnesota Relay). You may also send an e-mail to: ADRequest.do@state.mn.us. (Please request at least one week in advance).

NOTE: 2010 U.S. CENSUS FIGURES SHOWN FOR ALL MUNICIPALITIES UNLESS OTHERWISE STATED.