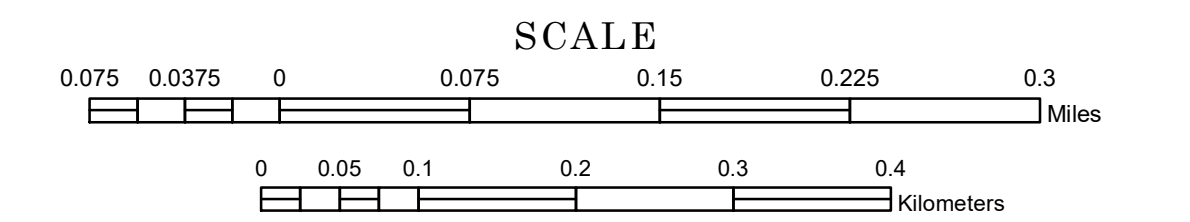


# MUNICIPALITY OF FARWELL

PREPARED BY THE  
MINNESOTA DEPARTMENT OF TRANSPORTATION  
OFFICE OF TRANSPORTATION SYSTEM MANAGEMENT

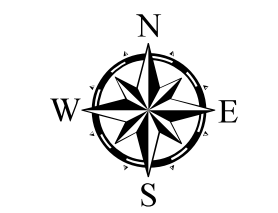
IN COOPERATION WITH  
U.S. DEPARTMENT OF TRANSPORTATION  
FEDERAL HIGHWAY ADMINISTRATION



1 in = 400 ft

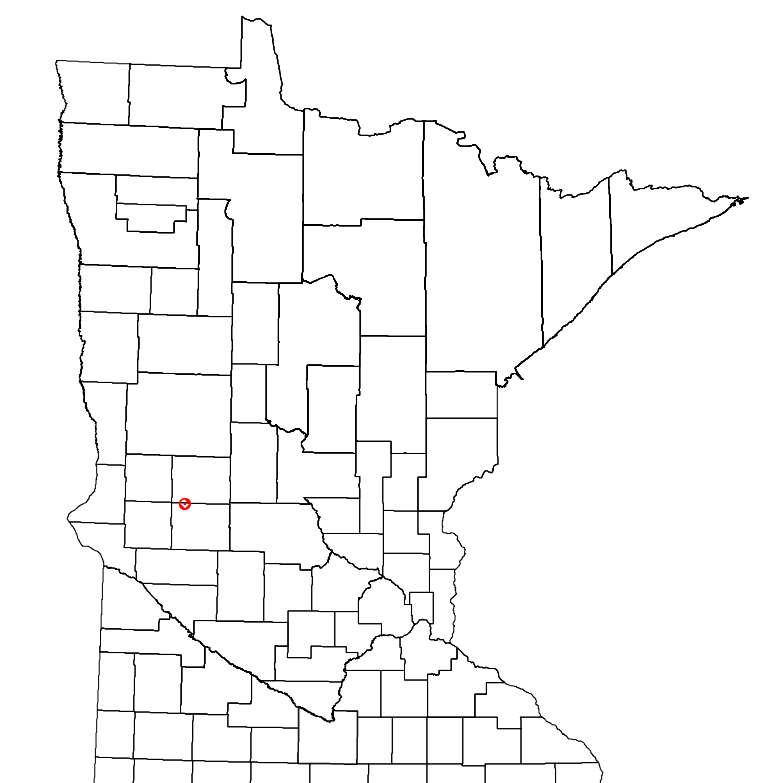
2023

Projection:  
Transverse Mercator  
NAD 1986  
UTM Zone 15

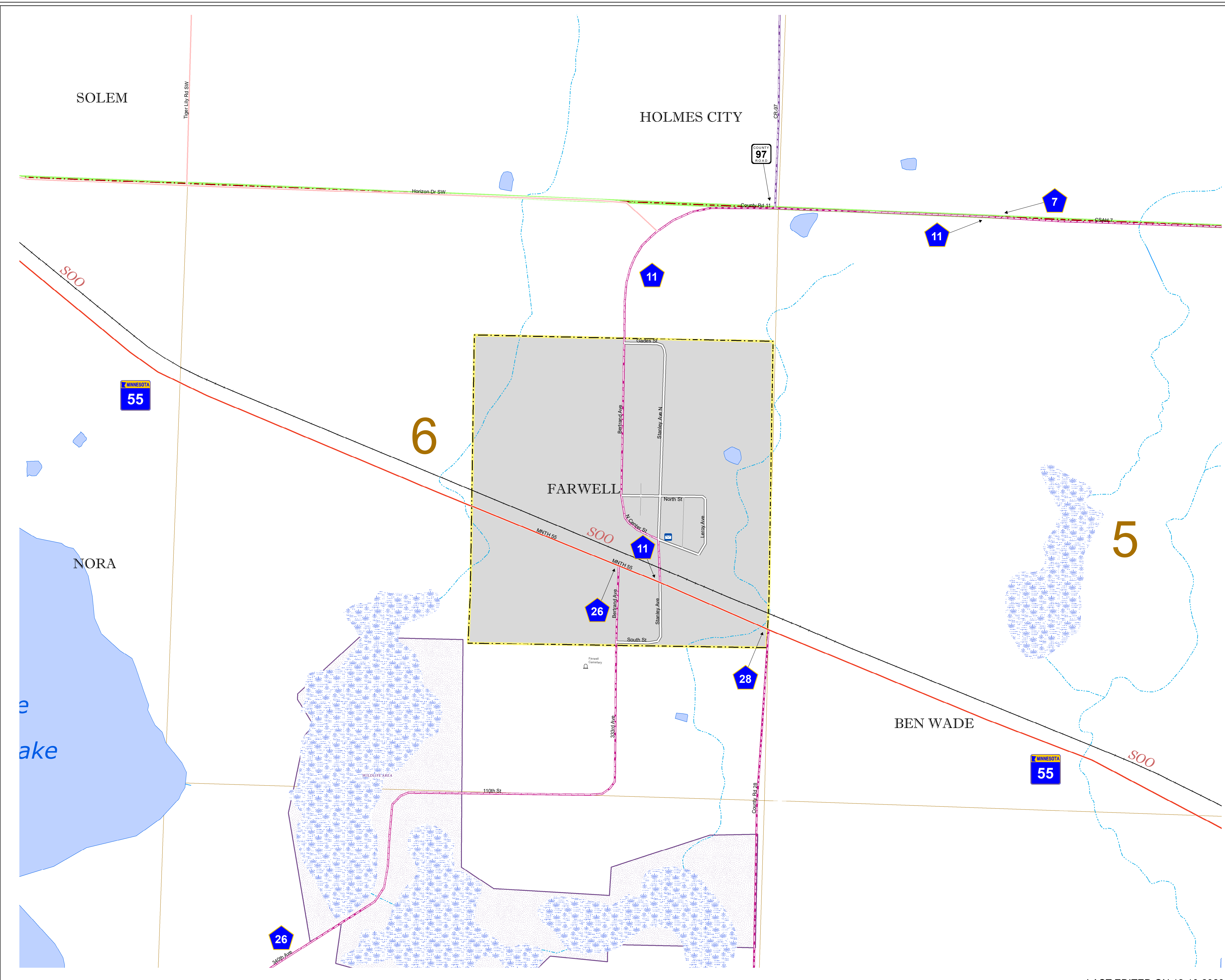


North American Datum  
of 1986

ROAD AND ROADWAY FEATURES	PUBLIC SERVICE FEATURES
INTERSTATE	MINDOT OFFICE
US HIGHWAY	MINDOT TRUCK STATION
MIN HIGHWAY	HIGHWAY PATROL DISTRICT OFFICE
COUNTY STATE AID HIGHWAY	STATE TRAVEL INFORMATION CENTER
COUNTY ROAD	REST AREA (Full Service)
MUNICIPAL STREET	REST AREA (Quick Turn)
MUNICIPAL STATE AID STREET	WAYSIDE (Only on Pkwy/Torq)
PRIVATE STREET/ROAD	PUBLIC ACCESS POINT
TOWNSHIP ROAD	FARGROUNDS
UNORGANIZED TERRITORY ROAD	PORT OF ENTRY
RAMP OR CONNECTOR	PARK AND RIDE LOT
INTERSTATE EXIT	PUBLIC UNIVERSITY COLLEGE
GREAT RIVER ROAD	PRIVATE UNIVERSITY COLLEGE
OTHER ROADS	ELEMENTARY SCHOOL
FARMROAD	MIDDLE SCHOOL
INDUS SERVICE	HIGH SCHOOL
MILITARY	NATIONAL FOREST STATE GAME
<b>RAILROAD AND RAILWAY FEATURES</b>	
RAILROAD	AVIATION FEATURES
EMPIRE BUILDER STATION (AMTRAK)	COMMERCIAL AIRPORT
NORTHSTAR STATION (COMASTER)	GENERAL AIRPORT
LIGHT RAIL	AIRSTRIP
BLUE LINE STATION	SEAPLANE
GREEN LINE STATION	AIRPORT RUNWAY
<b>INFRASTRUCTURE FEATURES</b>	
LONG BRIDGE (100' OR GREATER SPAN)	CULTURAL FEATURES
MAJOR BRIDGE (20' TO 100' SPAN)	STATE HISTORICAL MARKER
MINOR BRIDGE (0' TO 20' SPAN)	HISTORIC DISTRICT
ROAD TUNNEL (100' OR GREATER SPAN)	HISTORIC SITE
RAILROAD TUNNEL (100' OR GREATER SPAN)	MONUMENT
RAILROAD BRIDGE (LESSER 100' SPAN)	CEMETERY
SKYWAY	TRIBAL LAND
PEDESTRIAN BRIDGE	COUNTY
PEDESTRIAN TUNNEL	MUNICIPALITY
DAM	ADJACENT MUNICIPALITY
LOCK AND DAM	FEDERAL ADJUSTED URBAN AREA (2014)
<b>PUBLIC FACILITIES</b>	
STATE CAPITOL	MILITARY
FEDERAL COURTHOUSE	STATE PARK
COUNTY COURTHOUSE	REGIONAL PARK
ARMORY	NATIONAL FOREST
CITY HALL	NATIONAL AND STATE FOREST
TOWN HALL	STATE FOREST
COMMUNITY CENTER	NATIONAL TRAIL
ARENA	WILDLIFE REFUGE AREA
STADIUM	WILDLIFE MANAGEMENT AREA
POST OFFICE	HYDROLOGIC FEATURES
POLICE STATION	RIVER OR STREAM (PERMANENT)
FIRE STATION	LAKE, POND OR RESERVOIR
PUBLIC LIBRARY	STREAM (PERMANENT)
PUBLIC MUSEUM	DRAINAGE DITCH
EVENT CENTER	WETLAND
<b>CITY CENTERS</b>	
TRIBAL GOVERNMENT CENTER	ISLAND OR LAND
CITY CENTER	REGIONAL WATERSHED
LOCALLY INCORPORATED PLACE	
UNINCORPORATED COMMUNITY	



Population (U.S. Census 2020): 56



To request information from this document in an alternative format, call 651-366-4718 or 1-800-657-3774 (Greater Minnesota); 711 or 1-800-627-3529 (Minnesota Relay). You may also send an e-mail to ADARrequest.dot@state.mn.us. (Please request at least one week in advance.)

LAST EDITED ON 12-10-2023