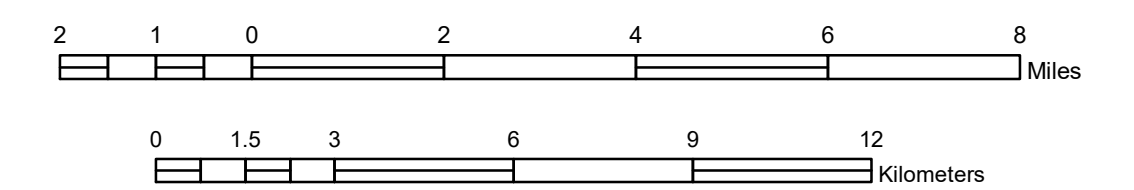


GENERAL HIGHWAY MAP LE SUEUR COUNTY MINNESOTA

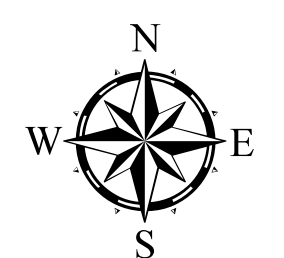
PREPARED BY THE
MINNESOTA DEPARTMENT OF TRANSPORTATION
OFFICE OF TRANSPORTATION SYSTEM MANAGEMENT
IN COOPERATION WITH
U.S. DEPARTMENT OF TRANSPORTATION
FEDERAL HIGHWAY ADMINISTRATION

SCALE



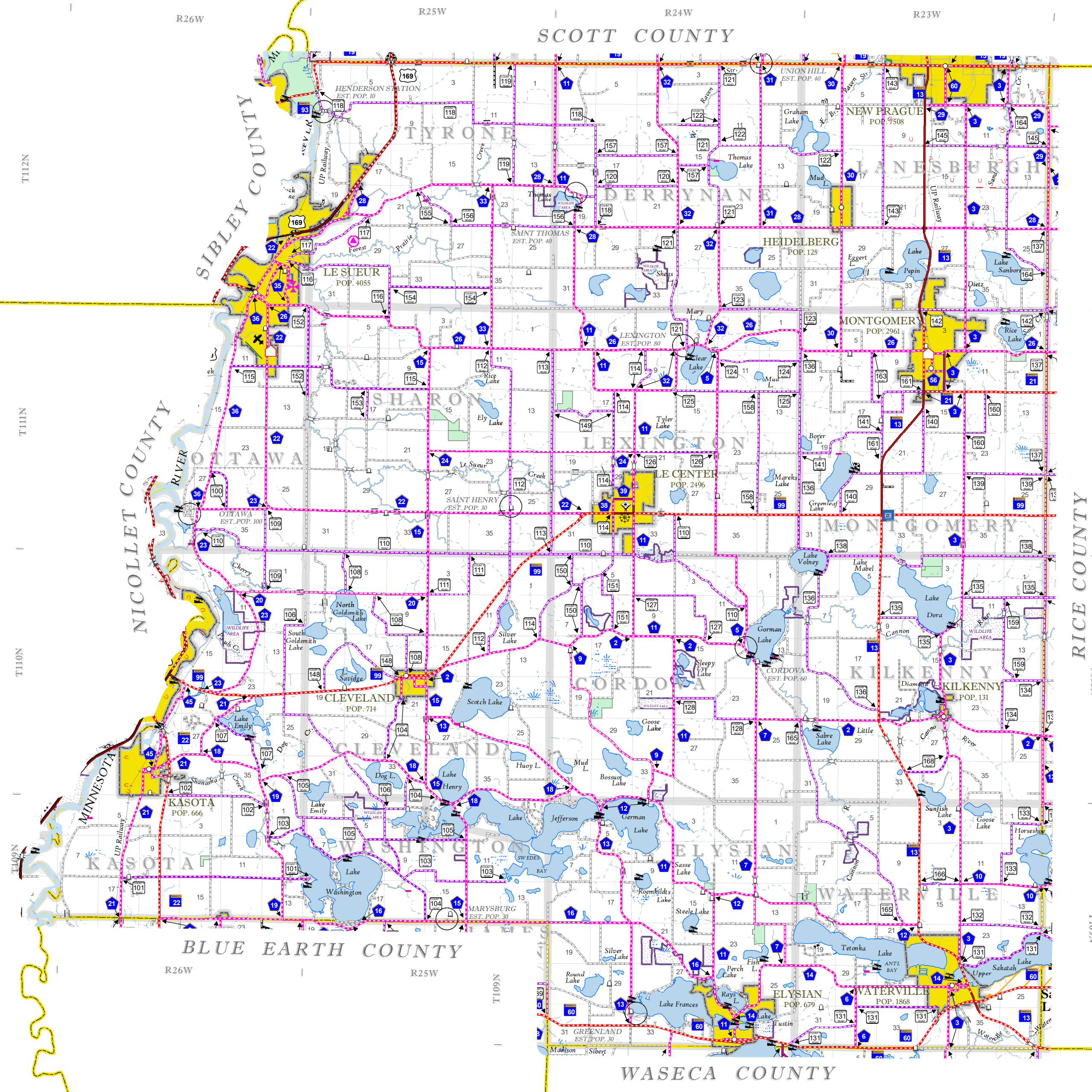
1 in = 2 miles

2023



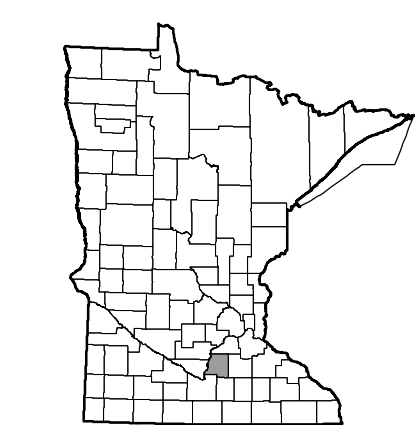
Projection:
Transverse Mercator
NAD 1986
UTM Zone 15

North American Datum
of 1986



ROAD AND ROADWAY FEATURES	
INTERSTATE	CONCRETE
US HIGHWAY	BITUMINOUS
MINN. HIGHWAY	GRAVEL
COUNTY STATE AID HIGHWAY	DIRT/UNIMPROVED
COUNTY ROAD	UNKNOWN
TREIL ROAD	PROPOSED
TOWNSHIP ROAD	RAMP OR CONNECTOR
UNORGANIZED TERRITORY ROAD	INTERSTATE EXT.
PRIVATE ROAD	GREAT RIVER ROAD
OTHER ROADS:	
MUNICIPAL	Military
	National Park
	Monument
	State Forest
	National Wildlife
	State Game
	AVIATION FEATURES
	COMMERCIAL AIRPORT (Complete Facilities)
	GENERAL AIRPORT (Limited Facilities)
	ARSTRIP (No Facilities)
	SEAPLANE
	AIRPORT RUNWAY
	BOUNDARY FEATURES
	TRIBAL LAND
	STATE OF MINNESOTA
	COUNTY
	MUNICIPALITY
	UNORGANIZED TERRITORY
	FEDERAL ADJUSTED URBAN AREA (2014)
	CIVIL TOWNSHIP
	CONGRESSIONAL TOWNSHIP
	SECTION
	MILITARY
	VOYAGEUR NATIONAL PARK
	BOUNDARY WATERS CANTON AREA WILDERNESS
	STATE PARK
	NATIONAL FOREST
	NATIONAL AND STATE FOREST
	STATE FOREST
	NATIONAL TRAIL
	WILDLIFE REFUGE AREA
	WILDLIFE MANAGEMENT AREA
	HYDROLOGIC FEATURES
	LAKE, POND OR RESERVOIR
	RIVER OR STREAM (PERMANENT)
	STREAM (INTERMITTENT)
	DRAINAGE DITCH
	WETLAND
	ISLAND OR LAND
	REGIONAL WATERSHED
	CULTURAL FEATURES
	STATE HISTORICAL MARKER
	HISTORIC DISTRICT
	HISTORIC SITE
	MONUMENT
	CEMETERY

Outline Map of Minnesota showing location of the County within the state.



Outline Map of the County.

Area of this County 473.47 Sq. Miles
Land Area 448.76 Sq. Miles
2020 Total County Population 28674

