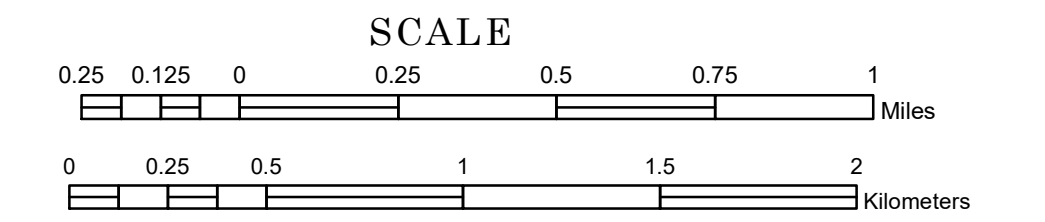


TOWNSHIP OF HOME BROOK

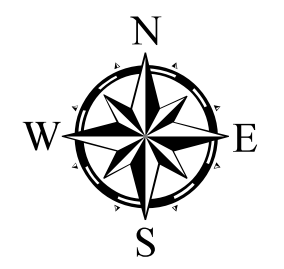
PREPARED BY THE
MINNESOTA DEPARTMENT OF TRANSPORTATION
OFFICE OF TRANSPORTATION SYSTEM MANAGEMENT

IN COOPERATION WITH
U.S. DEPARTMENT OF TRANSPORTATION
FEDERAL HIGHWAY ADMINISTRATION



1 in = 1,600 ft

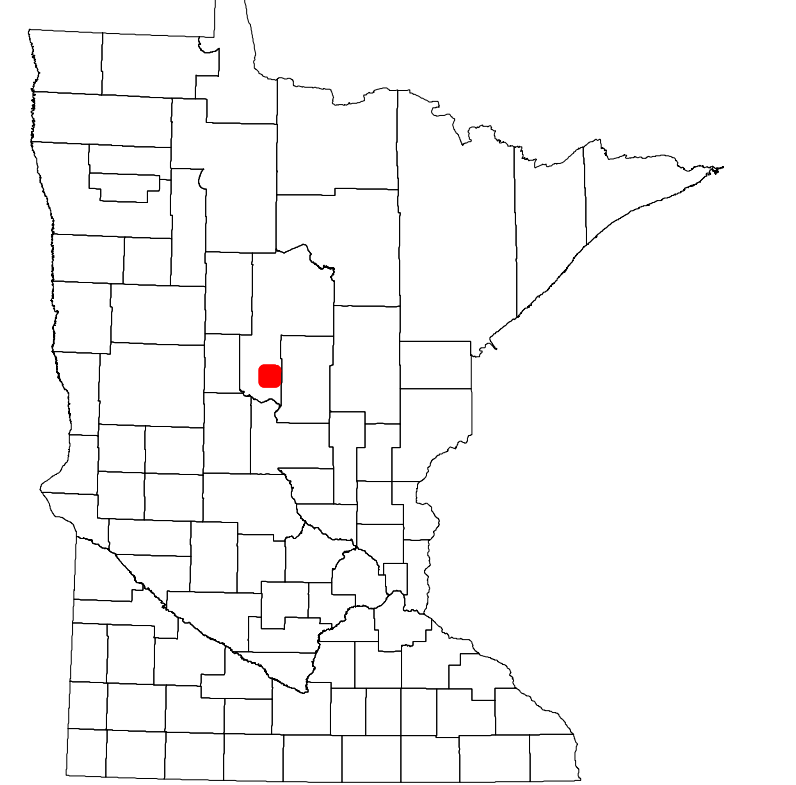
2023



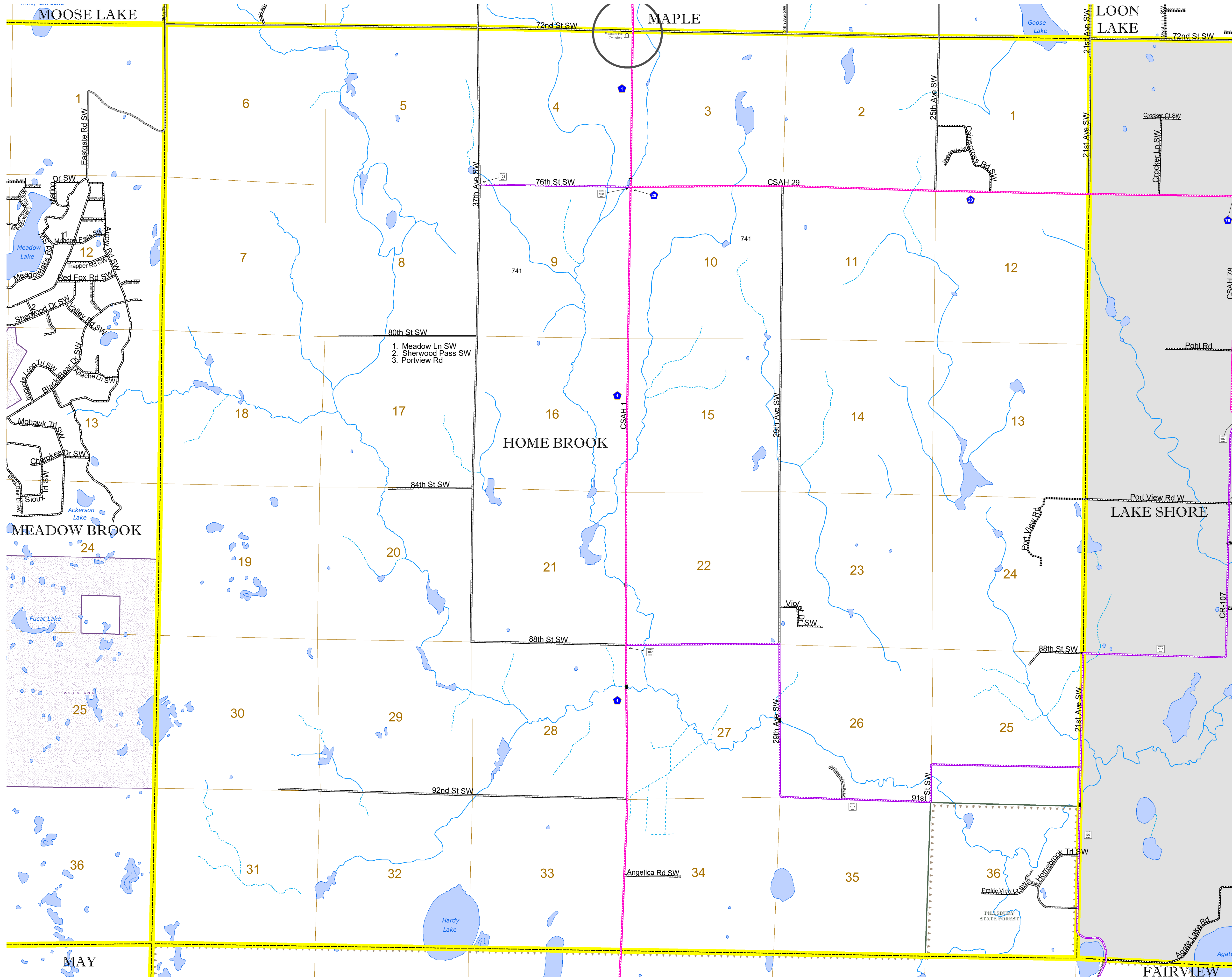
Projection:
Transverse Mercator
NAD 1986
UTM Zone 15

North American Datum
of 1986

ROAD AND ROADWAY FEATURES		BOUNDARY FEATURES	
INTERSTATE		TRIBAL LAND	
US HIGHWAY		STATE OF MINNESOTA	
MN HIGHWAY		COUNTY	
COUNTY STATE AID HIGHWAY		MUNICIPALITY	
COUNTY ROAD		UNORGANIZED TERRITORY	
TOWNSHIP ROAD		FEDERAL ADJUSTED URBAN AREA (2014)	
UNORGANIZED TERRITORY ROAD		CIVIL TOWNSHIP	
OTHER ROADS		CONGRESSIONAL TOWNSHIP	
Municipal		SECTION	
Private		MILITARY	
National Monument		VOYAGEURS NATIONAL PARK	
National Forest		BOUNDARY WATERS CANOE AREA WILDERNESS	
National Wildlife Refuge		STATE PARK	
State Park		REGIONAL PARK	
Preserve		NATIONAL FOREST	
		NATIONAL AND STATE FOREST	
		STATE FOREST	
		NATIONAL TRAIL	
		WILDLIFE REFUGUE AREA	
		WILDLIFE MANAGEMENT AREA	
		HYDROLOGIC FEATURES	
		RIVER OR STREAM (PERENNIAL)	
		LAKE, POND OR RESERVOIR	
		STREAM (INTERMITTENT)	
		DRAINAGE DITCH	
		WETLAND	
		ISLAND OR LAND	
		REGIONAL WATERSHED	



Population (U.S. Census 2010): 255



To request information from this document in an alternative format, call 651-366-4718 or 1-800-657-3774 (Greater Minnesota); 711 or 1-800-627-3529 (Minnesota Relay). You may also send an e-mail to ADArequest.dot@state.mn.us. (Please request at least one week in advance.)