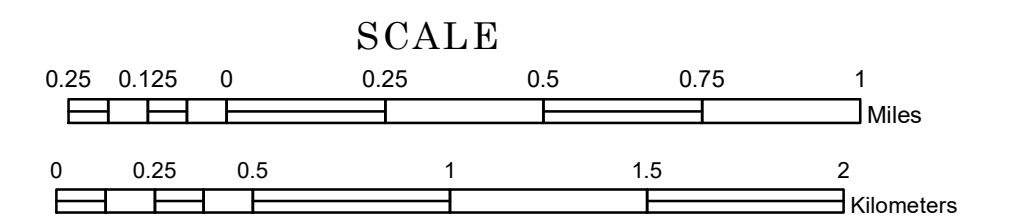


TOWNSHIP OF HOLMES CITY

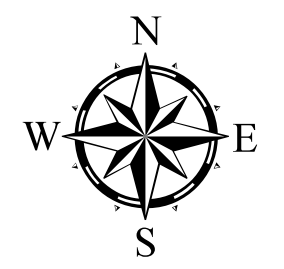
PREPARED BY THE
MINNESOTA DEPARTMENT OF TRANSPORTATION
OFFICE OF TRANSPORTATION SYSTEM MANAGEMENT

IN COOPERATION WITH
U.S. DEPARTMENT OF TRANSPORTATION
FEDERAL HIGHWAY ADMINISTRATION



1 in = 1,600 ft

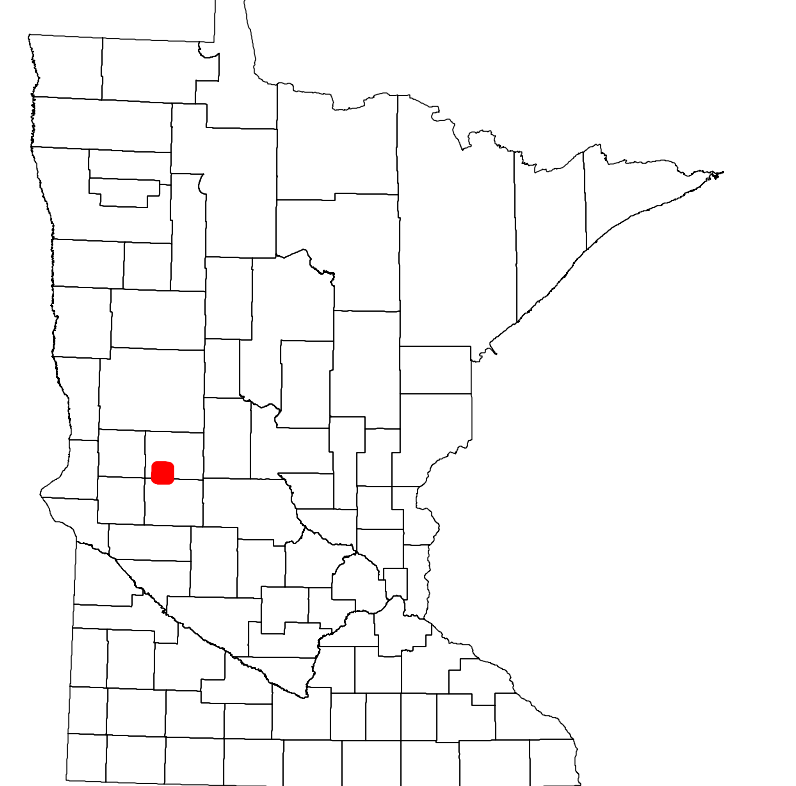
2023



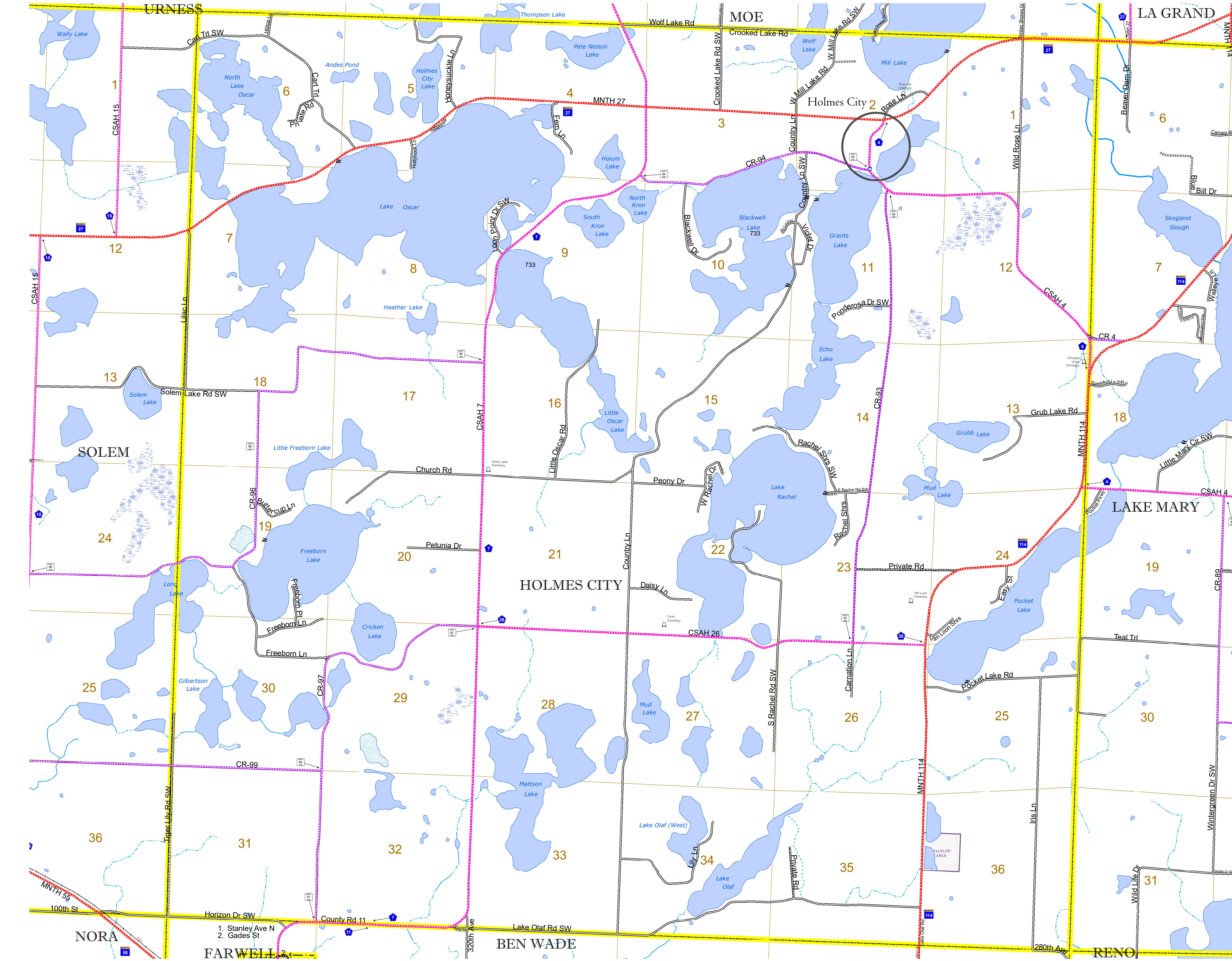
Projection:
Transverse Mercator
NAD 1986
UTM Zone 15

North American Datum
of 1986

ROAD AND ROADWAY FEATURES	
INTERSTATE	CONCRETE
US HIGHWAY	BITUMINOUS
MN HIGHWAY	GRAVEL
COUNTY STATE AID HIGHWAY	DIRT/UNIMPROVED
COUNTY ROAD	OTHER
TOWNSHIP ROAD	UNKNOWN
UNORGANIZED TERRITORY ROAD	
OTHER ROADS	
Municipal	RAMP OR CONNECTOR
Private	INTERSTATE EXIT
National Forest	GREAT RIVER ROAD
National Park	
National Wildlife State Game Preserve	
	RAILROAD AND RAILWAY FEATURES
	COMMERCIAL AIRPORT
	GENERAL AIRPORT
	AIRSTRIP
	SEAPLANE
	AIRPORT RUNWAY
	BOUNDARY FEATURES
	TRIBAL LAND
	STATE OF MINNESOTA
	COUNTY
	MUNICIPALITY
	UNORGANIZED TERRITORY
	FEDERAL ADJUSTED URBAN AREA (2014)
	CIVIL TOWNSHIP
	CONGRESSIONAL TOWNSHIP
	SECTION
	MILITARY
	VOYAGEURS NATIONAL PARK
	BOUNDARY WATERS CANOE AREA WILDERNESS
	STATE PARK
	REGIONAL PARK
	NATIONAL FOREST
	NATIONAL AND STATE FOREST
	STATE FOREST
	WILDLIFE REFUGUE AREA
	WILDLIFE MANAGEMENT AREA
	HYDROLOGIC FEATURES
	RIVER OR STREAM (PERENNIAL)
	LAKE, POND OR RESERVOIR
	STREAM (INTERMITTENT)
	DRAINAGE DITCH
	WETLAND
	ISLAND OR LAND
	REGIONAL WATERSHED
	CITY CENTERS
	STATE CAPITAL
	COUNTY SEAT
	CITY CENTER
	UNINCORPORATED COMMUNITY
	PUBLIC SERVICE FEATURES
	MNDOT OFFICE
	MNDOT TRUCK STATION
	HIGHWAY PATROL DISTRICT OFFICE
	STATE TRAVEL INFORMATION CENTER
	REST AREA (Full Service)
	REST AREA (Vault Toilet)
	WAYSIDE (Vault or Pit Toilet)
	PARK AND RIDE LOT
	PORT OF ENTRY
	PUBLIC ACCESS POINT
	MN STATE COLLEGE AND UNIVERSITY SYSTEM (MNSCU)
	UNIVERSITY OF MN SYSTEM
	FARMGROUNDS
	CULTURAL FEATURES
	STATE HISTORICAL MARKER
	HISTORIC DISTRICT
	HISTORIC SITE
	MONUMENT



Population (U.S. Census 2010): 804



To request information from this document in an alternative format, call 651-366-4718 or 1-800-657-3774 (Greater Minnesota); 711 or 1-800-627-3529 (Minnesota Relay). You may also send an e-mail to ADRequest.dot@state.mn.us. (Please request at least one week in advance.)