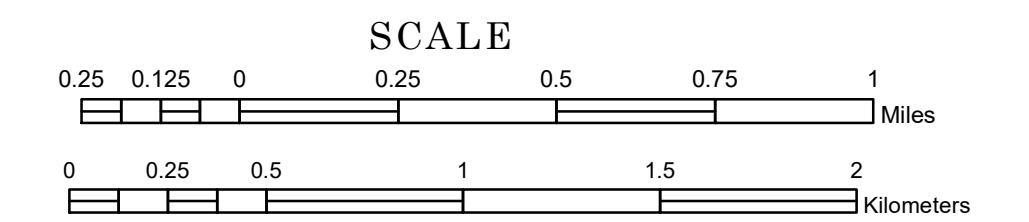


TOWNSHIP OF MIDWAY

PREPARED BY THE
MINNESOTA DEPARTMENT OF TRANSPORTATION
OFFICE OF TRANSPORTATION SYSTEM MANAGEMENT

IN COOPERATION WITH
U.S. DEPARTMENT OF TRANSPORTATION
FEDERAL HIGHWAY ADMINISTRATION



1 in = 1,600 ft

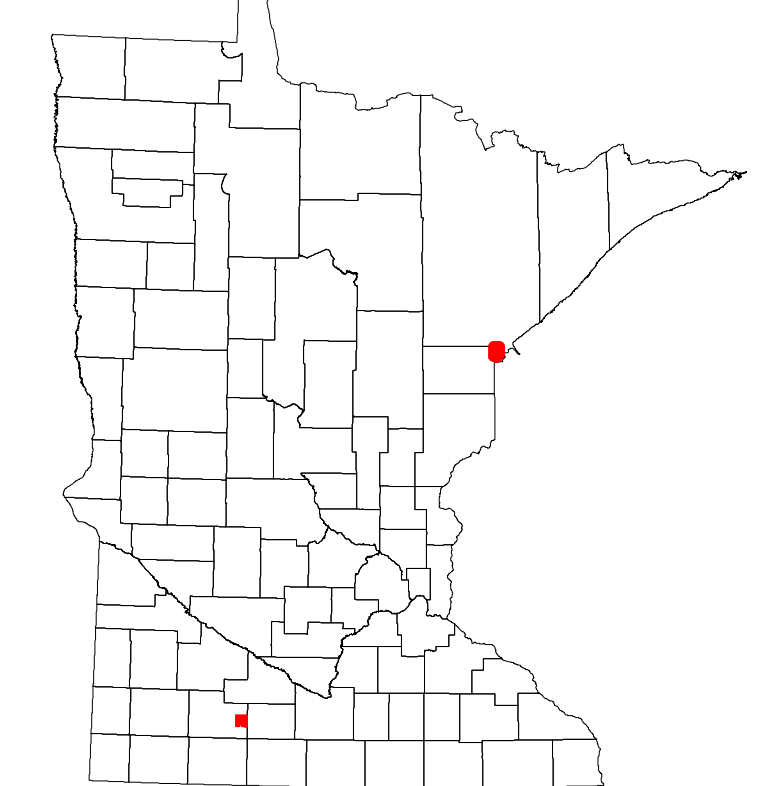
2023



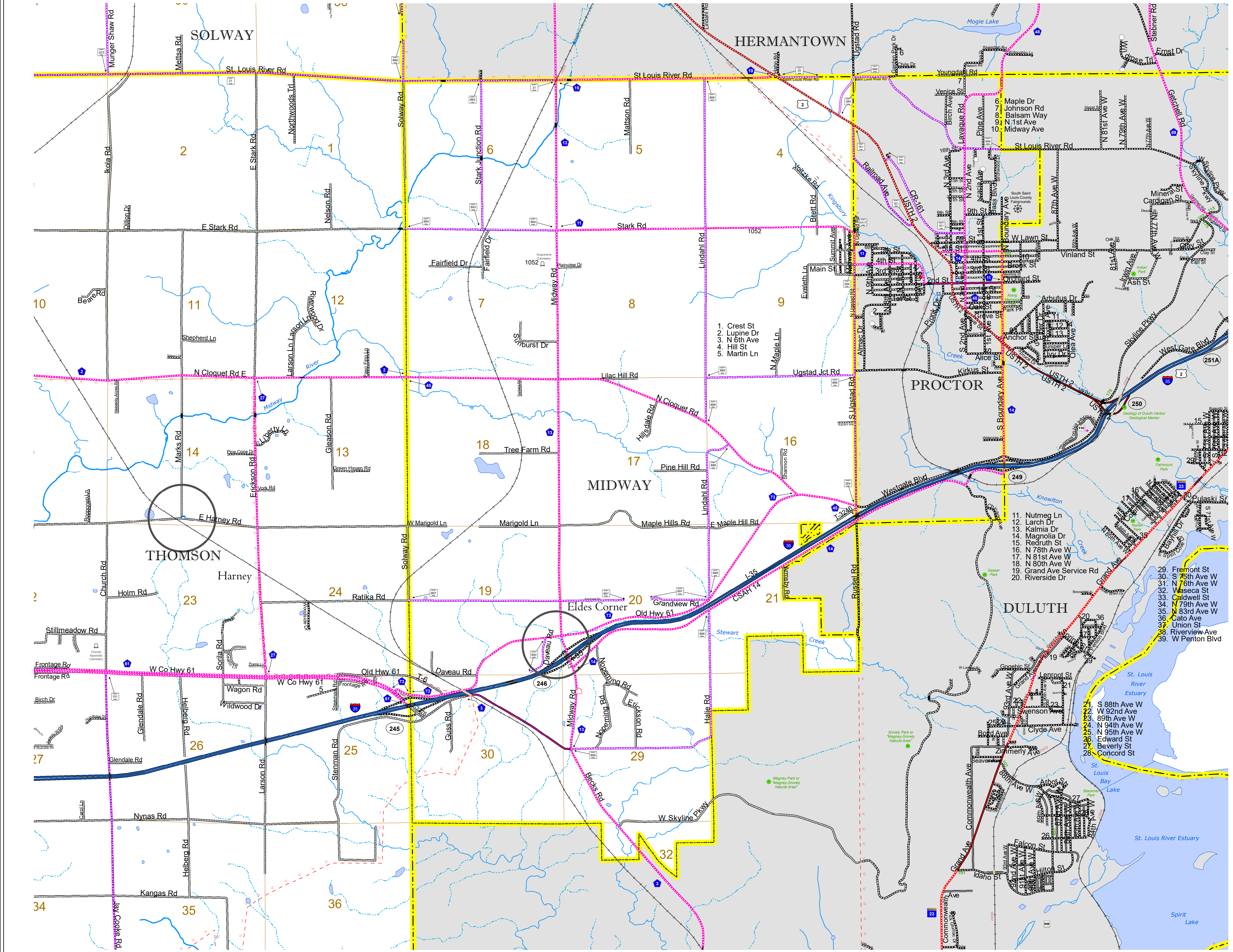
Projection:
Transverse Mercator
NAD 1986
UTM Zone 15

North American Datum
of 1986

ROAD AND ROADWAY FEATURES		AVIATION FEATURES	
INTERSTATE		CONCRETE	
US HIGHWAY		BITUMINOUS	
MN HIGHWAY		GRAVEL	
COUNTY STATE AID HIGHWAY		DIRT/UNIMPROVED	
COUNTY ROAD		OTHER	
TOWNSHIP ROAD		UNKNOWN	
UNORGANIZED TERRITORY ROAD			
OTHER ROADS		BOUNDARY FEATURES	
Municipal		TRIAL LAND	
Private		STATE OF MINNESOTA	
National Monument		COUNTY	
State Forest		MUNICIPALITY	
National Park		UNORGANIZED TERRITORY	
National Wildlife Refuge		FEDERAL ADJUSTED URBAN AREA (2014)	
State Game Preserve		CIVIL TOWNSHIP	
RAILROAD AND RAILWAY FEATURES		CONGRESSIONAL TOWNSHIP	
EMPIRE BUILDER STATION (AMTRAK)		SECTION	
NORTHSTAR STATION (COMPUTER)		MILITARY	
LIGHT RAIL		VOYAGEURS NATIONAL PARK	
BLUE LINE		BOUNDARY WATERS CANOE AREA WILDERNESS	
GREEN LINE		STATE PARK	
INFRASTRUCTURE FEATURES		REGIONAL PARK	
LONG BRIDGE (200' OR GREATER SPAN)		NATIONAL FOREST	
MAJOR BRIDGE (20' TO 200' SPAN)		NATIONAL AND STATE FOREST	
MINOR BRIDGE (5' TO 20' SPAN)		STATE FOREST	
DAM		NATIONAL TRAIL	
LOCK-AND-DAM		WILDLIFE REFUGUE AREA	
CITY CENTERS		WILDLIFE MANAGEMENT AREA	
STATE CAPITAL		HYDROLOGIC FEATURES	
COUNTY SEAT		RIVER OR STREAM (PERMANENT)	
CITY CENTER		LAKE, POND OR RESERVOIR	
UNINCORPORATED COMMUNITY		STREAM (INTERMITTENT)	
PUBLIC SERVICE FEATURES		DRAINAGE DITCH	
MNDOT OFFICE		HISTORIC DISTRICT	
MNDOT TRUCK STATION		HISTORIC SITE	
HIGHWAY PATROL DISTRICT OFFICE		MONUMENT	
STATE TRAVEL INFORMATION CENTER			
REST AREA (FULL SERVICE)			
REST AREA (VAULT TOILET)			
WAYSIDE (VAULT OR PITY TOILET)			
PARK AND RIDE LOT			
PORT OF ENTRY			
PUBLIC ACCESS POINT			
MN STATE COLLEGE AND UNIVERSITY SYSTEM (MNSCU)			
UNIVERSITY OF MN SYSTEM			
FAIRGROUNDS			
CULTURAL FEATURES			
STATE HISTORICAL MARKER			



Population (U.S. Census 2010): 1399



To request information from this document in an alternative format, call 651-366-4718 or 1-800-657-3774 (Greater Minnesota); 711 or 1-800-627-3529 (Minnesota Relay). You may also send an e-mail to ADAREquest.dot@state.mn.us. (Please request at least one week in advance.)