

Sample Plan

CONTOURS ----- NARRATIVE

References:

Design Scene: Chapter 17 - Cross Sections

Technical Memorandum No: 15-03-TS-01 Design Guidelines for Locating Wet Ponds with Permanent Water Depths Along Freeways and High Speed Highways

General Information:

Interchanges may be contoured to provide a basis for developing cross sections.

Show construction limits with a dashed line.

Label high points and low points.

Proposed contour lines should be heavier than existing lines.

Contours may be used to compute earthwork. If so, subnote on the earthwork summary.

Contours are typically drawn at 1' intervals (bold at 5' intervals).

Note that the contours shown are at finished ground (top of topsoil).

On large grading projects it may be helpful to have contours to identify potentially erosive areas.

Intersections may be contoured to ensure drainage.

Contours may need to be provided to Water Resources Engineering for ponding recommendations, permits, etc.

Sample Plan

CONTOURS ----- CHECKLIST

- ___ 1. Label ponds (name, high water elevation, normal water elevation, and bottom elevation)
- ___ 2. Label slopes (i.e. 1:6, 1:3)
- ___ 3. Bar Scale
- ___ 4. Right of Way, Easements and construction limits
- ___ 5. Contour elevations every 5 feet of change or as needed to show intent
- ___ 6. North arrow
- ___ 7. Cross references to other sheets (as applicable)
- ___ 8. Drawn by: and Checked by: Initials and Engineer's signature

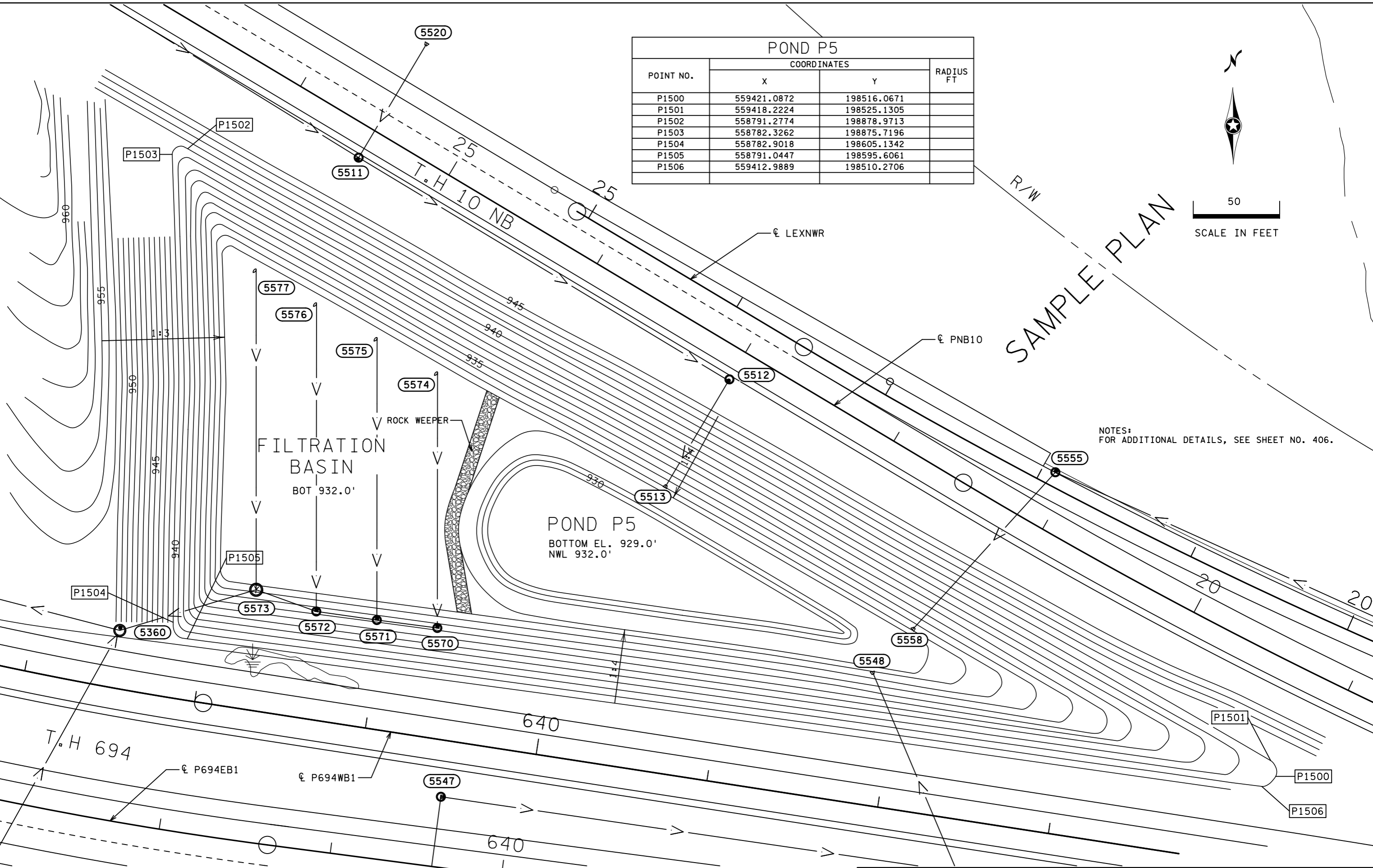
REVISION DATE 02/20/14
 PLOTTED/REVISED: 26-JAN-2017 09:13

DISTRICT #: METRO
 IPLOT NAME: spcontours
 FILENAME: Projects\DM_R0S\Non_Project\Design\SamplePlan\Eng\Ish\contours.dgn

POND P5			
POINT NO.	COORDINATES		RADIUS FT
	X	Y	
P1500	559421.0872	198516.0671	
P1501	559418.2224	198525.1305	
P1502	558791.2774	198878.9713	
P1503	558782.3262	198875.7196	
P1504	558782.9018	198605.1342	
P1505	558791.0447	198595.6061	
P1506	559412.9889	198510.2706	



SAMPLE PLAN



NOTES:
 FOR ADDITIONAL DETAILS, SEE SHEET NO. 406.