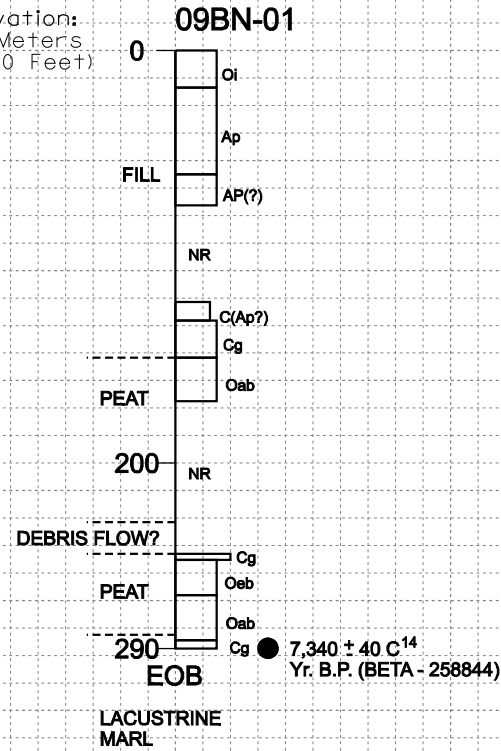
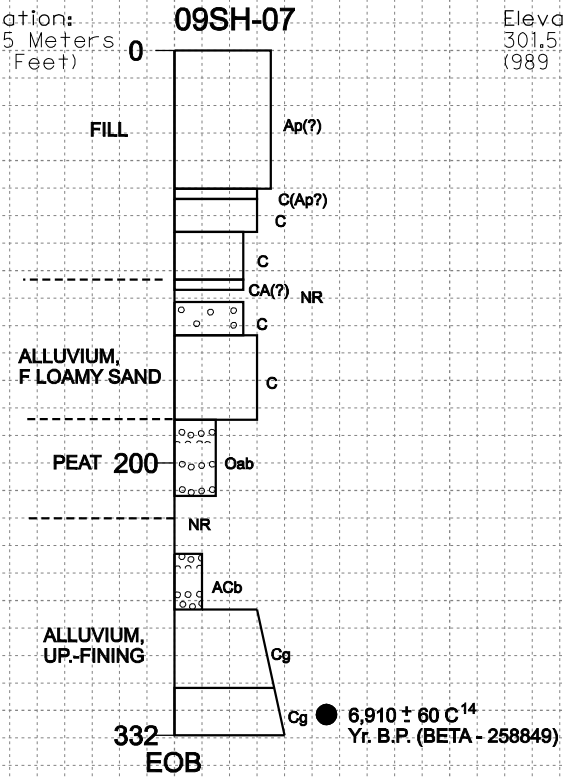


NOT APPLICABLE ↓

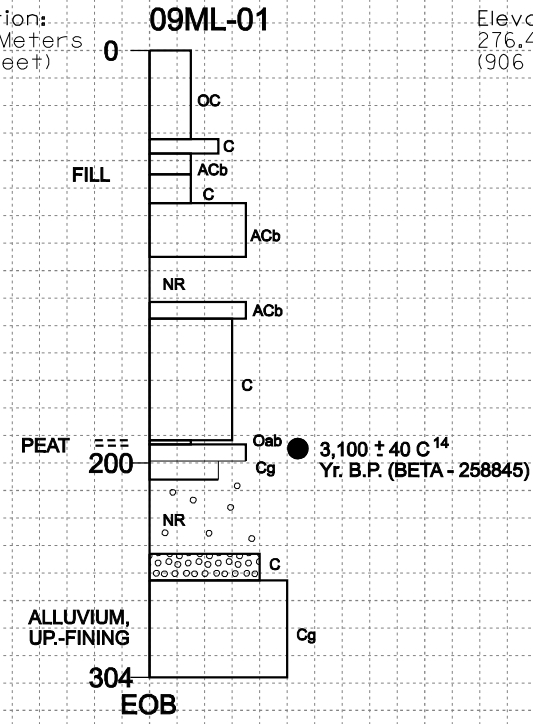
Elevation:  
311 Meters  
(1020 Feet)



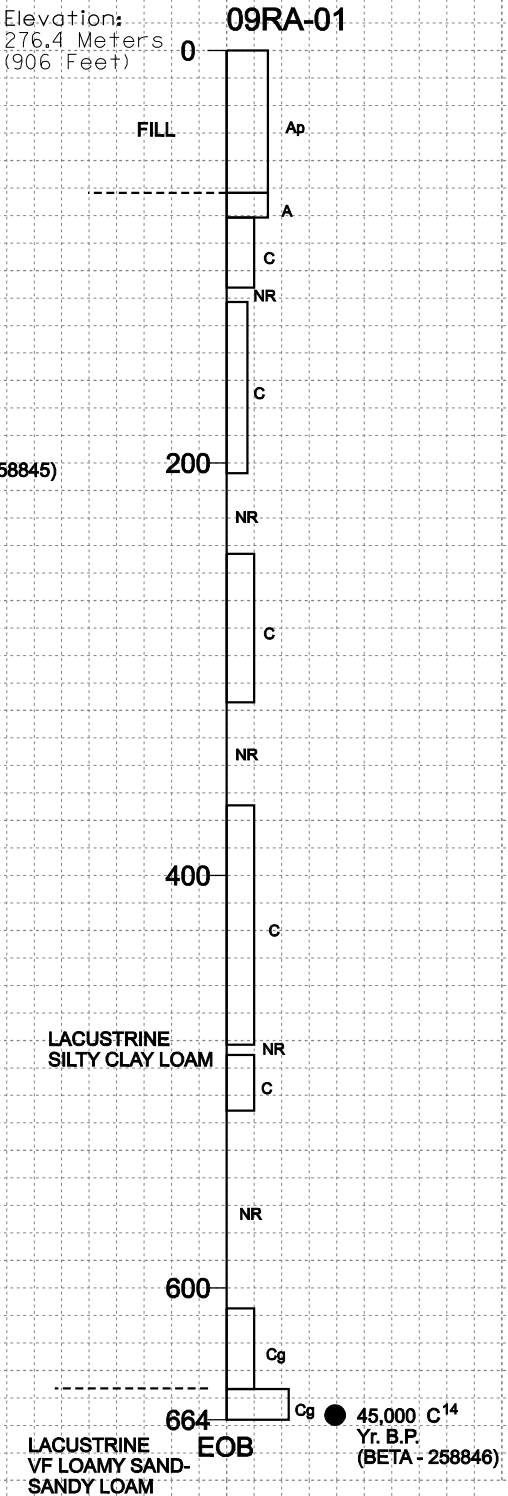
Elevation:  
302.5 Meters  
(992 Feet)



Elevation:  
301.5 Meters  
(989 Feet)



Elevation:  
276.4 Meters  
(906 Feet)



- 1 Clay, Silty Clay, or Sandy Clay
  - 2 Clay Loam, Silty Clay Loam, or Sandy Clay Loam
  - 3 Silt Loam, Silt, Loam, Peat, or Marl
  - 4 Very Fine to Fine Sandy Loam
  - 5 Very Fine to Fine Loamy Sand
  - 6 Very Fine to Fine Sand
  - 7 Medium to Coarse Sandy Loam to Sandy Loam
  - 8 Medium Sand
  - 9 Coarse Sand
  - 10 Gravel
- TEXTURE

<b>MINNESOTA DEPARTMENT OF TRANSPORTATION</b>	
<b>FIGURE 15 - AREAS 7, 8, 9, 10</b>	
<b>STRATIGRAPHY AND GRAPHIC</b>	
<b>SEDIMENT SOIL LOGS</b>	
SCALE AS SHOWN	PROJECT ID 06M058
DATE: 6-30-2009	
PREPARED BY: CKV	
CHECKED BY: CMH1	
FIGURE NO. <b>15</b>	

X:\MS\1E\2006\06M058\cod\cores\6m58\_corres.dgn 07/02/2009 CKV