

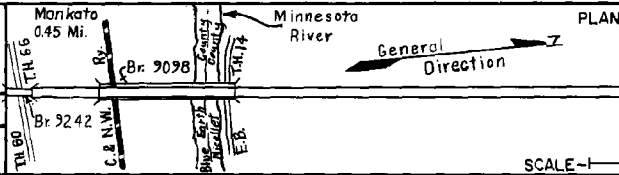
PREPARED BY
TRAFFIC AND PLANNING DIVISION
IN COOPERATION WITH
U.S. DEPARTMENT OF COMMERCE
BUREAU OF PUBLIC ROADS

STATE OF MINNESOTA
DEPARTMENT OF HIGHWAYS
ROAD LIFE STUDIES
CONSTRUCTION PROJECT LOG RECORD

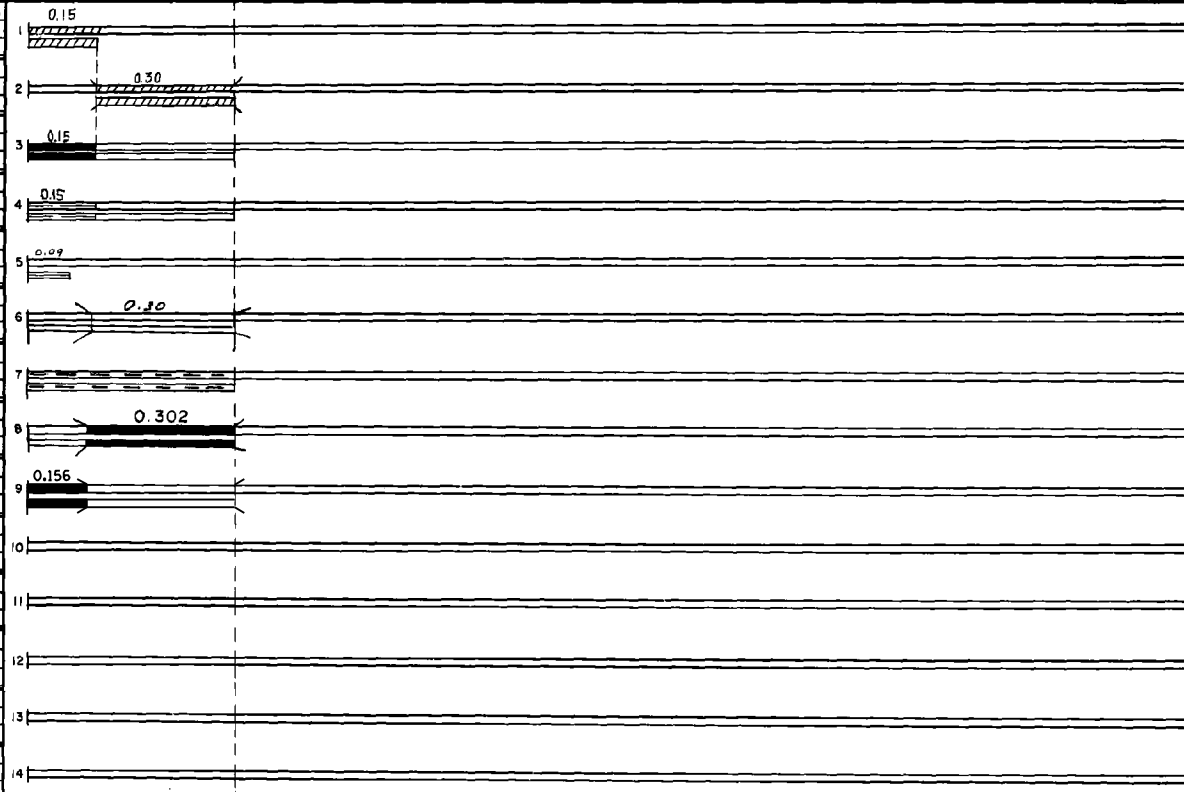
CONTROL SECTION 0716
TRUNK HIGHWAY 163
COUNTY Blue Earth
DISTRICT 7A

LIMITS: Jct. T.H. 60 (Jct. T.H. 66) - W. Jct. T.H. 14

Ref. Pt. 052+00.941 - 053+00.385



YEAR BUILT	PROJECT NO.	DESCRIPTION	WIDTH	THICKNESS	REMARKS	
C	0716-06	Grading			Approach to Br. 9098	
1961	0716-07	Grading Cr. Rock Base	26' 39"	4"		
C	0716-09	Rip Rap under Bridge				
1961	0716-03(0)	Br. 9098	20' 27"		1596' G.S. - O.H.	
	0716-03	P.C. Concrete	2-27"		Bridge Floor	
C	0716-10	P.C. Concrete	2-25"	8"		
1962	0716-11	Lighting System				
C	1972	0716-13	Seal Coat	Var	3/4 On Ramps	
C	1977	0716-18	LIGHTING, CURB CONST	VAR	Bit. CURB NBL ONLY	
C	1991	0716-19	Special Wind Traffic SF		Pia Joints	
C	1991	0716-19	Special Equipment			
M	1992	0716 SF	Bit. Surfacing on Br. 9098	27-36"	1" Sp. 2361	
C	1992	0716-21	Grading Bit. Surfacing	24'	4" 7 1/2"	Spec. 2361 Spec. 2341



YEARS		TOTAL MILES	UNINCORPORATED		INCORPORATED		RURAL		URBAN	
FROM	TO		RDWY. MI.	BR. MI.	RDWY. MI.	BR. MI.	RDWY. MI.	BR. MI.	RDWY. MI.	BR. MI.
1961		0.45	0.00	0.00	0.15	0.30	0.00	0.00	0.15	0.30

REMARKS: Layout is to scale as of 1961
 (1) Br. 9098 is made up of Girder spans, Beams & Slab spans