

PREPARED BY
HIGHWAY PLANNING SURVEY
IN COOPERATION WITH
U.S. PUBLIC ROADS ADMINISTRATION

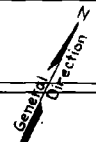
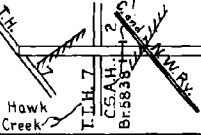
STATE OF MINNESOTA
DEPARTMENT OF HIGHWAYS
ROAD LIFE STUDIES
CONSTRUCTION PROJECT LOG RECORD

CONTROL SECTION 1205
TRUNK HIGHWAY 23
COUNTY Chippewa
DISTRICT 8A

LIMITS: E. Jct. TH 7 - E. Co. Line

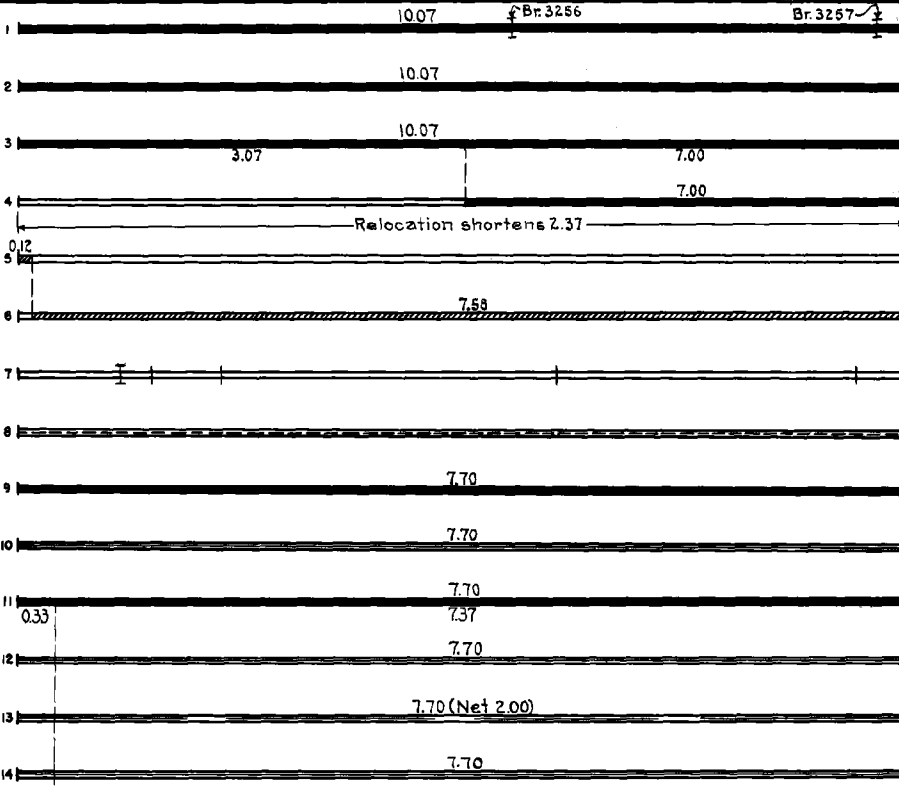
Clara City
0.79 Mi.

PLAN



Co.
Chippewa
Kandiyohi

YEAR BUILT	PROJECT N ^o	DESCRIPTION			CODE N ^o
		TYPE	WIDTH	THICKNESS	
1920	17-49-3	Grading Br. 3256 Br. 3257	26' 20' 20'		1
1921	17-49-3	Gravel	20'	3"	2
1929	(1) 17-49-3	Oil Tr. Gravel	21.58'	1"	3
1938	A.F.E. 37 1940 A.F.E. 37	Reshape Gravel	26' 21'	1"	4
1938	23-49-23-3B	Grading Gravel	32' 24'	2"	5
1939	1205-02	Grading	40'		6
1939	1205-05 1205-07	Br. 5838 Mono. Culverts	30'		7
1940	1205-11 A.F.E. 6	Seeding			8
1940	1205-10	Gravel Lift Mixed Bitum.	34' 26'	9" 1"	9
1941	A.F.E. 6	Bit. Seal Coat			10
1944	1205-15	Subgr. Corr. (Spots) Mixed Bit.	28'	1 1/2" Added	11
1945	A.F.E. 5	Bit. Seal Coat			12
1947	A.F.E. 4	Spot Treat. Bit. Surf. Repair			13
1950	A.F.E. 4	Bit. Fog Seal	24'		14



YEARS FROM	YEARS TO	TOTAL MILES	UNINCORPORATED		INCORPORATED		RURAL		URBAN	
			RDWY. MI.	BR. MI.	RDWY. MI.	BR. MI.	RDWY. MI.	BR. MI.	RDWY. MI.	BR. MI.
1921	1938	0.07	8.96	0.01	1.10	0.00	10.06	0.01	0.00	0.00
1939	1943	7.70	5.48	0.00	2.21	0.01	7.69	0.01	0.00	0.00
1944	1950	7.70	6.91	0.00	0.78	0.01	7.69	0.01	0.00	0.00
1951	1961	7.70	6.91	0.00	0.78	0.01	6.91	0.00	0.78	0.01
1962		7.58	6.79	0.00	0.78	0.01	6.79	0.00	0.78	0.01

REMARKS: Layout is to scale as of 1939

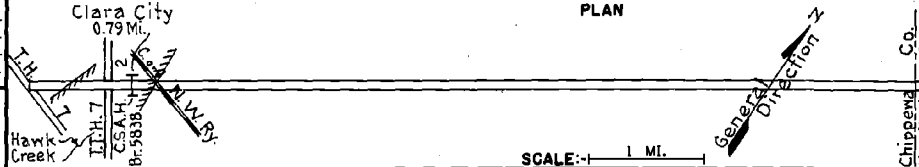
(1) This work not done under this project number but lies within the limits of this project

PREPARED BY
HIGHWAY PLANNING SURVEY
IN COOPERATION WITH
U. S. PUBLIC ROADS ADMINISTRATION

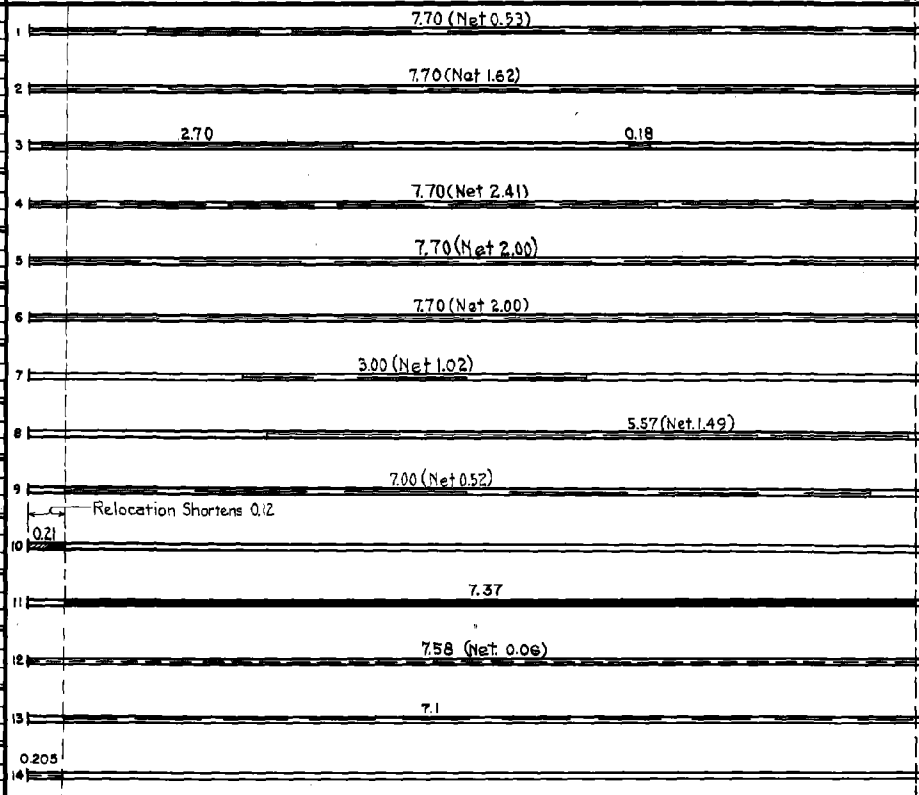
STATE OF MINNESOTA
DEPARTMENT OF HIGHWAYS
ROAD LIFE STUDIES
CONSTRUCTION PROJECT LOG RECORD

CONTROL SECTION 1205
TRUNK HIGHWAY 23
COUNTY Chippewa
DISTRICT 8A

LIMITS: E. Jct. I.H. 7 - E. Co. Line



YEAR BUILT	PROJECT N°	DESCRIPTION			CODE N°
		TYPE	WIDTH	THICKNESS	
M 1952	A.F.E. 4	Spot Treat. Bit. Surf. Repair	24'		1
M 1953	A.F.E. 604	Spot Treat. Bit. Surf. Repair			2
M 1954	A.F.E. 604	Bit. Surf. Repair	24'		3
M 1955	A.F.E. 604	Spot Treat. Bit. Surf. Repair	24'		4
M 1956	A.F.E. 604	Spot Treat. Bit. Surf. Repair	24'		5
M 1957	A.F.E. 604	Spot Treat. Bit. Surf. Repair	24'		6
M 1958	A.F.E. 604	Spot Treat. Bit. Surf. Repair	24'		7
M 1960		Spot Treat. Bit. Surf. Repair	24'		8
M 1961		Spot Treat. Bit. Surf. Repair	24'		9
C 1962	1203-09	Grading Sub-base Gravel & Rd. Mix Bit. base Plant Mix Bit	24' 3"		10
C 1967	1205-17	Grading Sub-base & Base P.C. Concrete	24' 6" 7 1/2"		11
M 1973	SF	Joint & Crack Sealant			12
M 1983	SF	Clean, Saw & Reseal Joints in Conc. Pmnt.			13
M 1984	SF	Spot Bit. Overlays	24' 3"		14



YEARS FROM	TO	TOTAL MILES	UNINCORPORATED		INCORPORATED		RURAL		URBAN	
			RDWY. MI.	BR. MI.	RDWY. MI.	BR. MI.	RDWY. MI.	BR. MI.	RDWY. MI.	BR. MI.

REMARKS: See Sheet No. 1

