

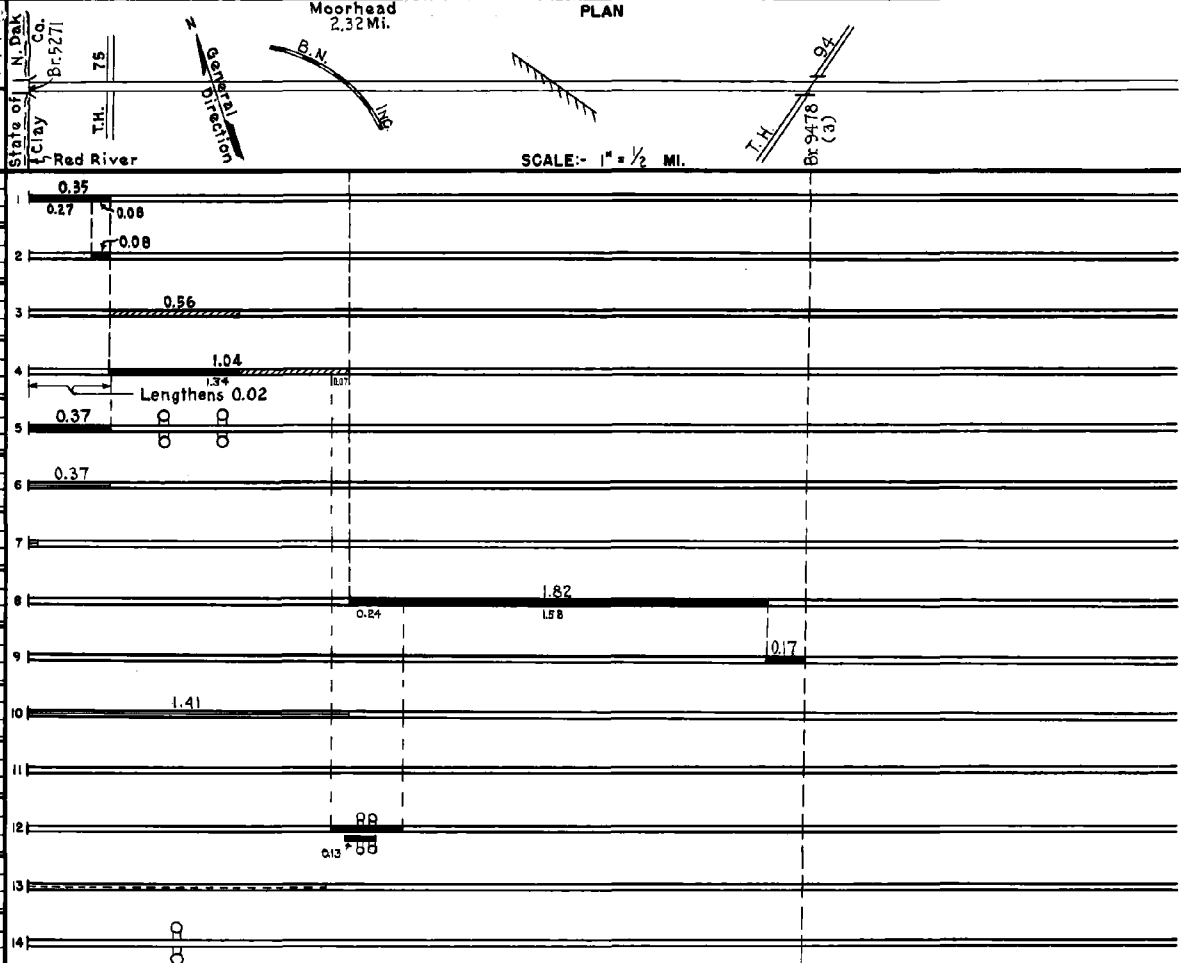
PREPARED BY  
HIGHWAY PLANNING SURVEY  
IN COOPERATION WITH  
U.S. PUBLIC ROADS ADMINISTRATION

STATE OF MINNESOTA  
DEPARTMENT OF HIGHWAYS  
ROAD LIFE STUDIES  
CONSTRUCTION PROJECT LOG RECORD

CONTROL SECTION 1411  
TRUNK HIGHWAY 231  
COUNTY Clay  
DISTRICT 4A

LIMITS: E. end of Br 5271 (Red River) in Moorhead - Jct. T.H. 94

YEAR BUILT	PROJECT N <sup>o</sup>	TYPE	WIDTH	THICKNESS	REMARKS	CODE N <sup>o</sup>
		Concrete	48"		No Record of Const. Taken over from City in 1949	
1949	1411-02	Concrete	50'	9"-9"		
		Concrete	30"	9"	No Record of Const. Taken over from City in 1954	
1954	1411-03	Grade & Grade Widening	40'			
		Conc. Base (1)				
		Plant Mix Bit.	26"	2'-5"		
1955	1411-05	Conc. Base Widening	Var.	7"		
	1411-08	Plant Mix Bit.	64'	5 5/8"		
		Traffic Signals				
1956	A.P.E. 605	Heavy Bit. Seal	64'		RT-10, 3118 Gal. Agg. 132 C.Y.	
1960		Sloping Beneath & Bit. Curb on Approach of Br 5271			By Maint. Dist.	
1961		Concrete	20'	9"-9"	Transferred from C.S. 1405 (T.H. 52) in 1963	
1962		Concrete	24'	8"	Transferred from C.S. 1405 (T.H. 52) in 1963	
1965	c	Bit. Seal Coat			RS-2C 4448 Gal. Agg. 197 C.Y.	
1967	BF	Escape Lane at Morningside Development	12'	3"	MC 250, 200 Gals. Agg. 129 Tons	
1971	1411-14	Grade & Base Asph. Conc. Surf. Traffic Signal	44'	5/8"		
1973	1411-18	Bit. Seal Coat	64'	5/8"		
1975	-19 U/4186-1	TRAFFIC SIGNALS			AT 117TH ST.	



YEARS		TOTAL MILES	UNINCORPORATED		INCORPORATED		RURAL		URBAN	
FROM	TO		RDWY. MI.	BR. MI.	RDWY. MI.	BR. MI.	RDWY. MI.	BR. MI.	RDWY. MI.	BR. MI.
1949	1953	0.35	0.00	0.00	0.35	0.00	0.00	0.00	0.35	0.00
1954	1954	1.39	0.00	0.00	1.39	0.00	0.00	0.00	1.39	0.00
1955	1962	1.41	0.00	0.00	1.41	0.00	0.00	0.00	1.41	0.00
1963		3.40	1.08	0.00	2.32	0.00	1.08	0.00	2.32	0.00

REMARKS: Layout is to scale as of 1949  
 (1) 30'-36" x 9" conc. base imp. widened to 64' with 7" conc. from Mi. Pt. 0.35-0.91, balance 24'-64" x 7" new concrete.  
 (2) Contract not final but work substantially complete (3) Br. 9478 (299 x 30' B.S.) carries T.H. 231 over T.H. 94, see C.S. 1480

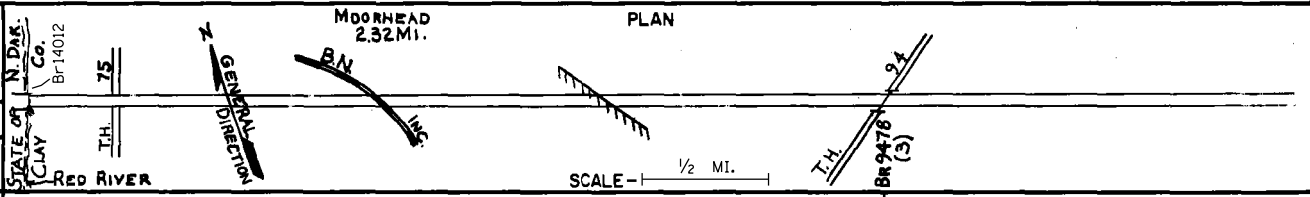
10-75

PREPARED BY  
 TRANSPORTATION PLANNING AND PROGRAMMING DIVISION  
 IN COOPERATION WITH  
 U.S. DEPARTMENT OF TRANSPORTATION-FEDERAL HIGHWAY ADMINISTRATION

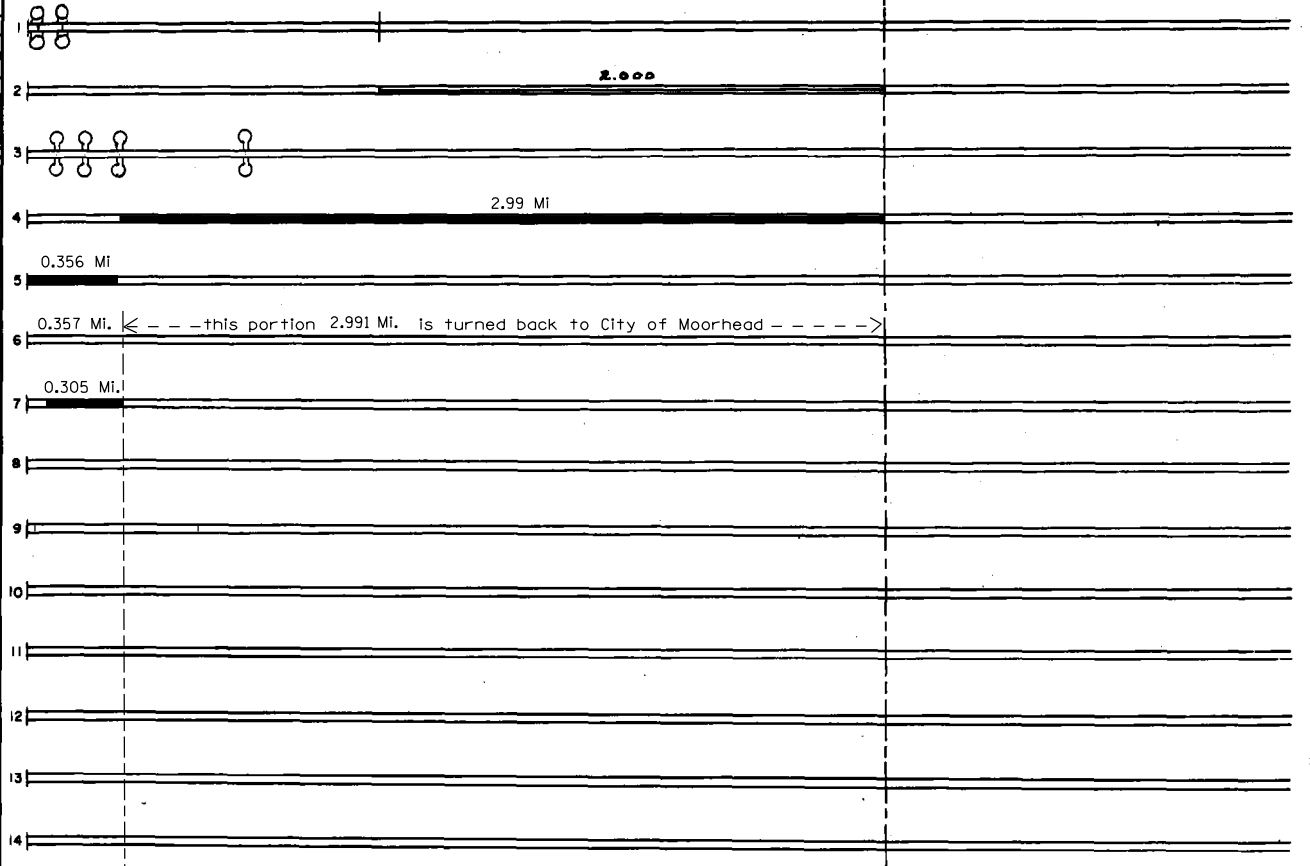
STATE OF MINNESOTA  
 DEPARTMENT OF HIGHWAYS  
 ROAD LIFE STUDIES  
 CONSTRUCTION PROJECT LOG RECORD

CONTROL SECTION 1411  
 TRUNK HIGHWAY 10  
 COUNTY CLAY  
 DISTRICT 4A

LIMITS: E End of Br 14012:Red River of the North -  
 S Jet of USTH-75 ; 8th St S: MSAS 136 And  
 Ref. Pt. 000+00.071 - 000+00.428



YEAR BUILT	PROJECT NO	DESCRIPTION			
		TYPE	WIDTH	THICKNESS	REMARKS
C	-21				SYSTEM A @ 3RD ST. SYSTEM B @ 4TH ST
M	1978 SF	SHOULDER STABILIZER MATERIAL	10'	4"	
C	1978 1411-22	TRAFFIC CONTROL SIGNAL SYSTEM			AT 5TH, 6TH, 8TH & 14TH STS IN MOORHEAD
C	1987 1411-26	Bit. Overlay	61'	1"	Spec. 2341
C	1988 1411-29	Bit. Overlay	61'	1"	Spec. 2331 Spec. 2361
C	1989 CS 1411	MNTH 231 is discontinued - remaining portion of CS 1411 Turnback portion goes to City of Moorhead			becomes USTH-10 Effective 1989
C	2013 1411-32 (1401-166)	Grading Bit. Mill & Overlay Agg base C5	60'	2"	Bridge 5271 Replacemnt Spec 2360 New Br 14012



YEARS		TOTAL MILES	UNINCORPORATED		INCORPORATED		RURAL		URBAN	
FROM	TO		RDWY. MI.	BR. MI.	RDWY. MI.	BR. MI.	RDWY. MI.	BR. MI.	RDWY. MI.	BR. MI.

REMARKS: SEE SHEET NO. 1