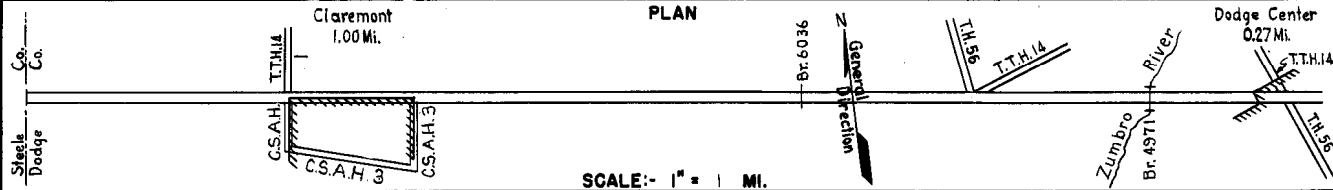


PREPARED BY  
HIGHWAY PLANNING SURVEY  
IN COOPERATION WITH  
U. S. PUBLIC ROADS ADMINISTRATION

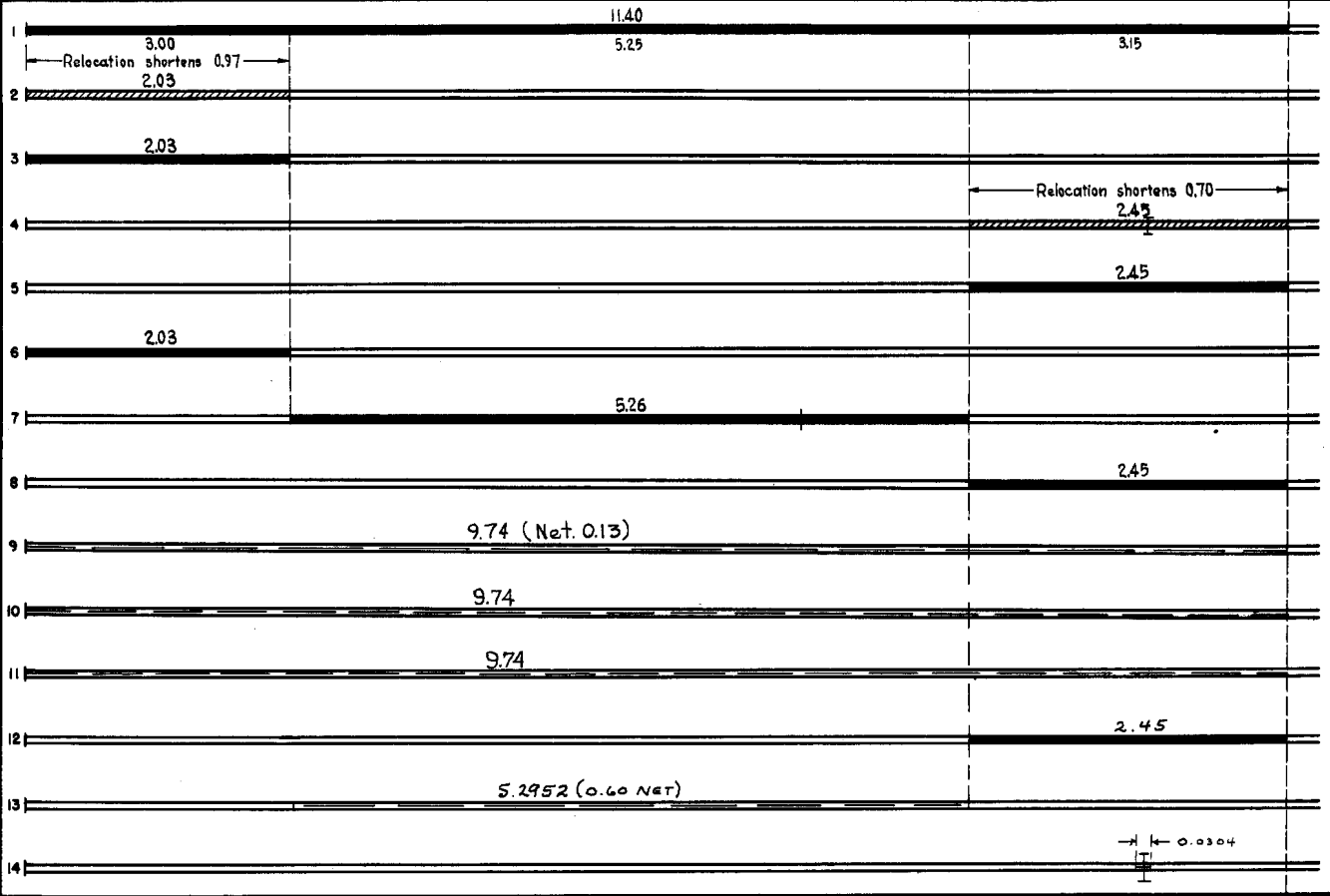
STATE OF MINNESOTA  
DEPARTMENT OF HIGHWAYS  
ROAD LIFE STUDIES  
CONSTRUCTION PROJECT LOG RECORD

CONTROL SECTION 2001  
TRUNK HIGHWAY 14  
COUNTY Dodge  
DISTRICT 6B

LIMITS: W. Co. Line - Jct. T.H.56 in Dodge Center



YEAR BUILT	PROJECT N <sup>o</sup>	DESCRIPTION				CODE N <sup>o</sup>
		TYPE	WIDTH	THICKNESS	REMARKS	
1920	14-7-5	Grading Gravel	24'	2 1/2"	1200 C.Y./Mile.	
1926	14-7-34 B	Grading	30'			
1928	14-7-34 B	Gravel	24'	3 1/2"	1600 C.Y./Mile.	
1930	14-7-45-2	Grading Br. 4971	40'	27"	85' L.T.	
(1)						
1930	14-7-45-2	Gravel	30'	1 3/4"	1027 C.Y./Mile. Maint. Dept.	
1930	14-7-34 B	Concrete	20'	9-7-9		
1930	14-7-45-1	Concrete Br. 6036	20'	9-7-9	W108DX44'	
1931	14-7-45-2	Concrete	20'	9-7-9		
M	1968	SF	Spot Patch	24' 1"	MC-250 90 Gals. Agg. 9 1/2 Tons	
C	1972	2001-03	Lip Curve Removal Agg. Shoulders Bif. Turn Lanes	8' 3" 12' 4 1/2"	(2)	
M	1972	SF	Replacement Agg. Shoulders	10' Var.	12,625 ton Cr. Rock 3/4"	
C	1976	2001-06 RFOOT-3(W)	WIDENING & Bif. OVERLAY	26'	2 3/4"	
M	1971	SF	SPOT Bif. OVERLAY	20' 1"	391.5 TONS AC-1 2321 WEAR COAT RC-250 TACK 375 GAL	
M	1976	SF	SEAL COAT WITH AGG.	27' 3/8"	CRS-2 55 GAL. AT BR. 4971	



YEARS		TOTAL MILES	UNINCORPORATED		INCORPORATED		RURAL		URBAN		REMARKS: Layout is to scale as of 1930
FROM	TO		RDWY. MI.	BR. MI.	RDWY. MI.	BR. MI.	RDWY. MI.	BR. MI.	RDWY. MI.	BR. MI.	
1921	1925	11.40	10.13	0.00	1.27	0.00	11.40	0.00	0.00	0.00	(1) This work not done under this project number but lies within the limits of this project. (2) Turn Lane at C.S.A.H. 1 (N. & S.); C.S.A.H. 3 (S); W. Jct. T.H. 56 (N), E. Jct. T.H. 56 (S)
1926	1929	10.43	9.16	0.00	1.27	0.00	10.43	0.00	0.00	0.00	
1930	1939	9.74	8.53	0.02	1.19	0.00	9.72	0.02	0.00	0.00	
1940	1967	9.74	8.53	0.02	1.19	0.00	9.45	0.02	0.27	0.00	
1968		9.74	8.45	0.02	1.27	0.00	9.45	0.02	0.27	0.00	

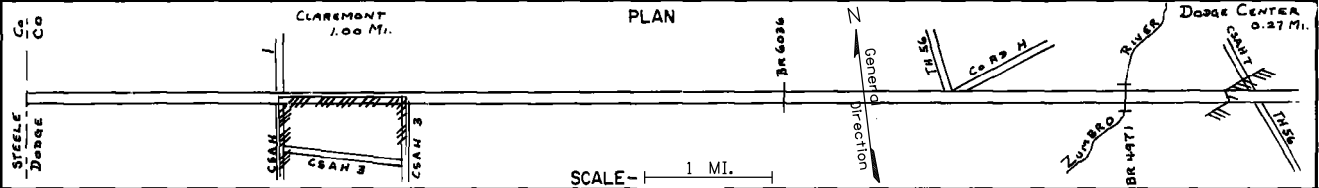
PREPARED BY  
BUREAU OF POLICY & PLANNING  
IN COOPERATION WITH  
U.S. DEPARTMENT OF TRANSPORTATION-FEDERAL HIGHWAY ADMINISTRATION

STATE OF MINNESOTA  
DEPARTMENT OF TRANSPORTATION  
CONSTRUCTION PROJECT LOG RECORD

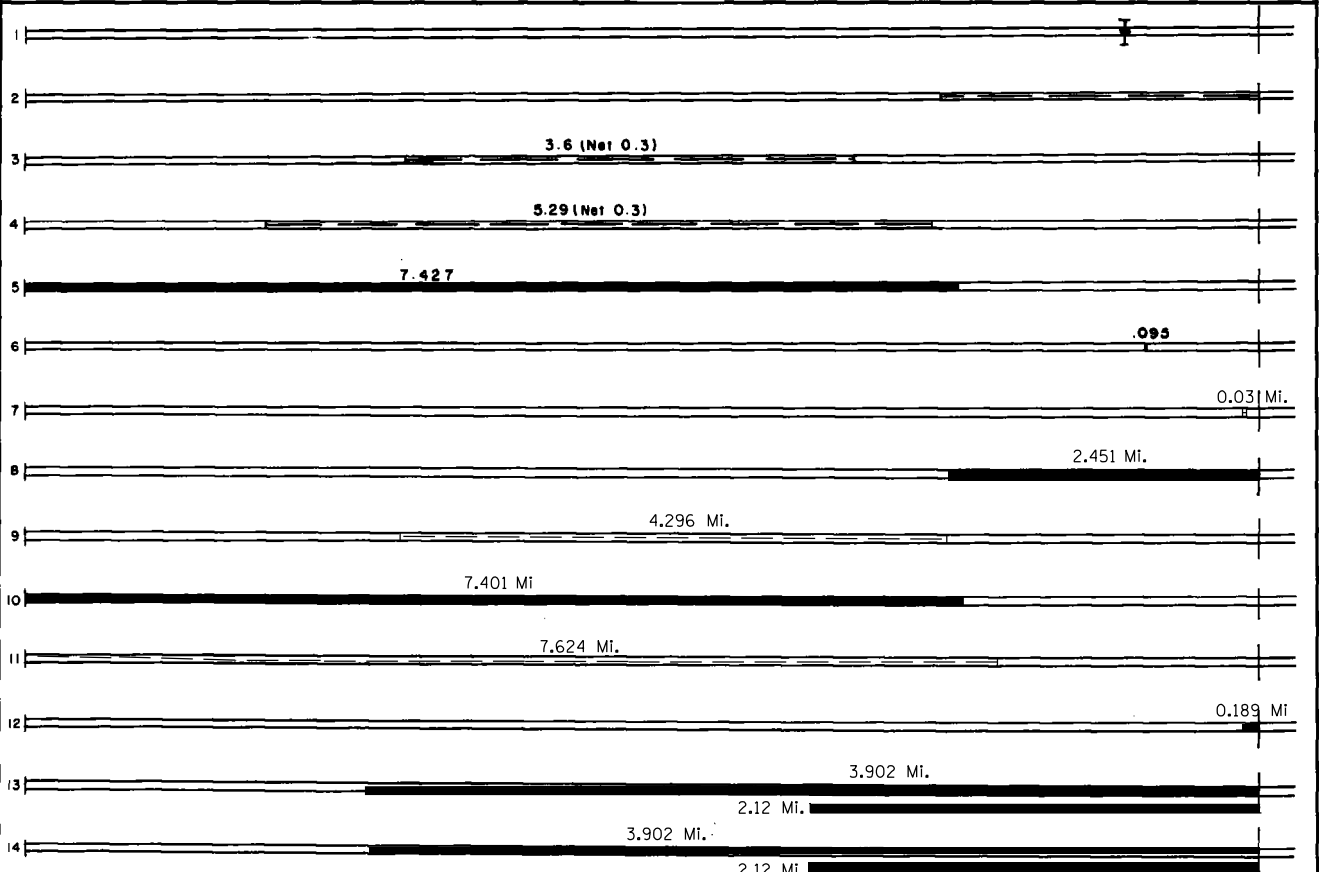
CONTROL SECTION 2001  
TRUNK HIGHWAY 14  
COUNTY Dodge  
DISTRICT 6B

LIMITS: W. Co. Line - Jct TH 56 IN DODGE CENTER

Ref. Pt. 182+00.285 - 191+00.960



YEAR BUILT	PROJECT NO	DESCRIPTION			
		TYPE	WIDTH	THICKNESS	REMARKS
C	1978 2001-10	GRADING, BIT. SURF.	44'	6 1/2"	Star Agg (17 5/8" Bit. Pav)
		BA 2000 F (Repl. M497)	24'	2 1/4"	1/2" Bit Binder (21 1/2" Bit. W/rag) / Co. 5' Cons (PPC) BS
C	1978 2001-07	Culvert Extensions			Between W. Jct. TH 14 & TH. 56 to W. Corp Limits of Kasson
		Misc. Grading for Culverts			
M	1978 SF	Concrete Pavement Repairs	20'	0'-6"	213 Tons 100 Gal. CSSIH Tack 2331 AC-I Wearing
M	1981 SF	Spot Bit. Patches	20'	Var.	24 Tons 2331 AC-I Wearing
		Spot Gravel Patches	36'	Var.	1624 Tons 75 Gal. CSSIH Tack
C	1983 2001-11	Grading, Agg. Base	30'	10"	
		Bit. Surface	24'	5 1/4"	
		Bit. Shoulders	10'	1 1/2"	
M	1984 SF	EB Rt. Turn Lane	12'	3"	133 Tons Bit.
		WB Escape Lane	12'	3"	212 Tons Bit.
M	1985 SF	Spot Overlay			Spec. 2331
C	1987 2001-13	Bit. Overlay	24'	1"	Spec. 2331 Spec. 2341
M	1989 SF	Spot Overlay			Spec. 2331
C	1993 2001-16	Bit. Overlay	24'	4"	Spec. 2341
M	1995 M95064	Crack Sealing			
C	1998 2001-19	Bit. Milling	24'	1 1/2"	
		Bit. Overlay	24'	3"	spec. 2350
C	2000 2001-22	Grading	55'		
		Agg. Base	Var	23"	Class 5
C	2000 2001-23	Concrete & Bit. Surfacing	28'	9"	



YEARS		TOTAL MILES	UNINCORPORATED		INCORPORATED		RURAL		URBAN	
FROM	TO		RDWY. MI.	BR. MI.	RDWY. MI.	BR. MI.	RDWY. MI.	BR. MI.	RDWY. MI.	BR. MI.

REMARKS: BR 20005 REPLACED BR 4971

