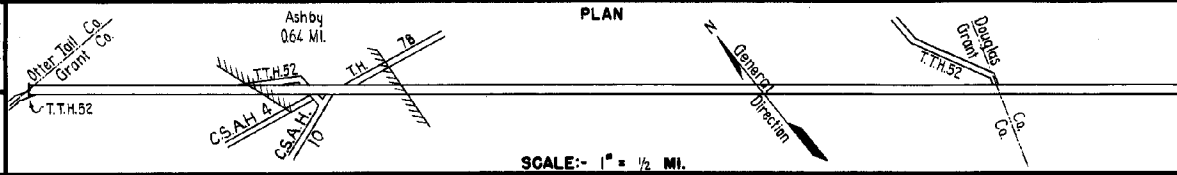


PREPARED BY  
HIGHWAY PLANNING SURVEY  
IN COOPERATION WITH  
U. S. PUBLIC ROADS ADMINISTRATION

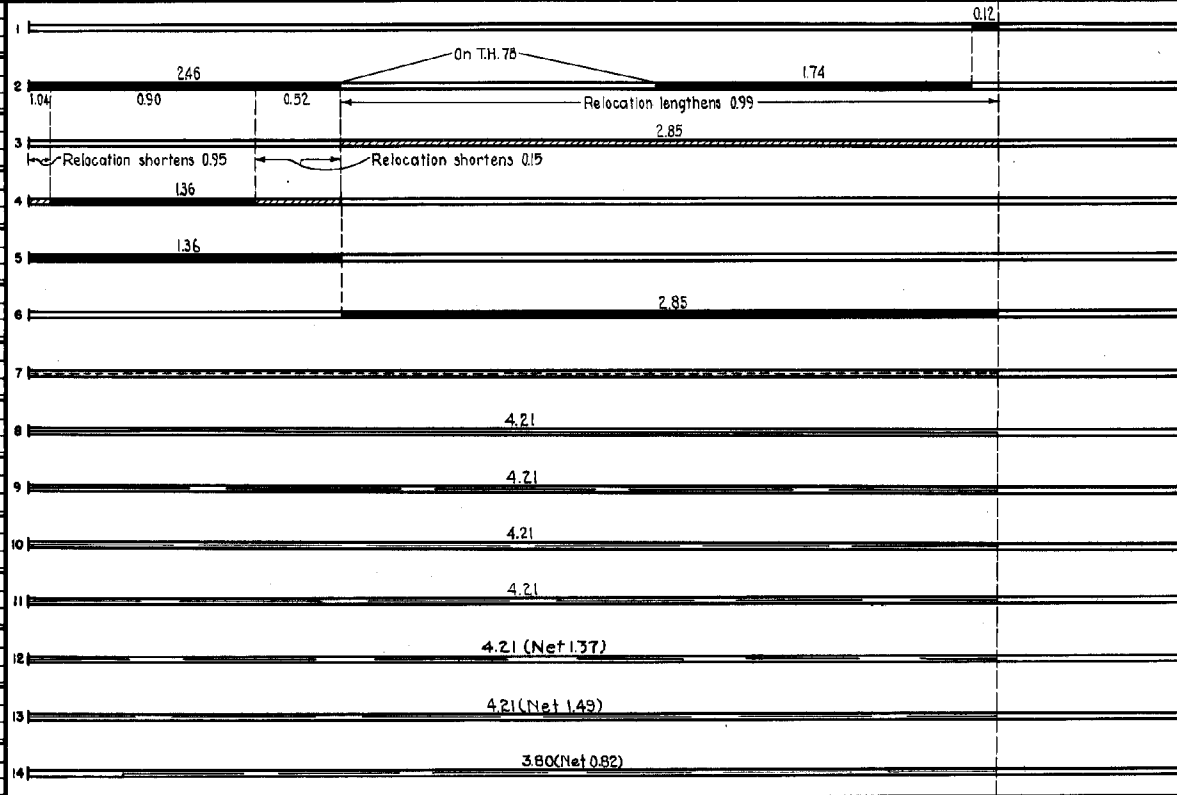
STATE OF MINNESOTA  
DEPARTMENT OF HIGHWAYS  
ROAD LIFE STUDIES  
CONSTRUCTION PROJECT LOG RECORD

CONTROL SECTION 2606  
TRUNK HIGHWAY 52  
COUNTY Grant  
DISTRICT 4B

LIMITS: N. Co. Line - E. Co. Line



YEAR BUILT	PROJECT N <sup>o</sup>	DESCRIPTION				CODE N <sup>o</sup>
		TYPE	WIDTH	THICKNESS	REMARKS	
		Gravel	24'	2"	No Record of Constr.	
		Gravel	24'	2"	Added in 1934.	
1921		Gravel	24'	2 3/4"	Co. Job 1910. 1800 C.Y./Mile. Added in 1934.	
1935	52-153-22-1	Grading Sand Base Stab Grav.	32' 32' 24'		4' Sand Stab with Binder Soil. With Binder Soil.	
1936	52-153-22-2A&B	Grading Gravel	32' 30'		1040 C.Y./Mile.	
1940	2606-01	Stab Grav. Base Bit. Surf. Tr.	30' 26'0"		6" 3/4"	
C	1940	2606-01	26'0"		3/4"	
C	1941	A.F.E. 33			Seeding	Seed supplied by R.S.D.(S.P. 2606-04) Maint. Dept.
M	1942	A.F.E. 5			Bit Seal Coat	RF-10, 3547 Gal./Mi. Grav. 114 C.Y./Mi. Maint. Dept.
M	1943	A.F.E. 4			Spot Treat. Bit. Surf. Repair	MC2, 1416 Gal./Mi. Grav. 73 C.Y./Mi. Maint. Dept.
M	1944	A.F.E. 4 A.F.E. 25		26'	Spot Treat. Bit. Surf. Repair & Subgr. Corr. (Spots)	Bit. 1935 Gal./Mi. Grav. 171 C.Y./Mi. Maint. Div.
M	1945	A.F.E. 4		26'	Spot Treat. Bit. Surf. Repair	MC2 & RG3, 4629 G./Mi. Grav. 161 C.Y./Mi. Maint. Div.
M	1947	A.F.E. 4		24'	Spot Treat. Bit. Surf. Repair	SC3, 9976 Gal. Agg. 697 Tons
M	1948	A.F.E. 4		24' 26'6"-9"	Spot Treat. Bit. Surf. Repair Spot Grav. Lifts	SC3, 12462 Gal. Agg. 1873 Tons
M	1949	A.F.E. 4		26'	Spot Treat. Bit. Surf. Repair	SC3, 4579 Gal. Agg. 260 C.Y.



YEARS		TOTAL MILES	UNINCORPORATED		INCORPORATED		RURAL		URBAN	
FROM	TO		RDWY. MI.	BR. MI.	RDWY. MI.	BR. MI.	RDWY. MI.	BR. MI.	RDWY. MI.	BR. MI.
1934	1934	432	3.80	0.00	0.52	0.00	432	0.00	0.00	0.00
1935	1935	531	4.52	0.10	0.79	0.00	531	0.00	0.00	0.00
1936	1964	421	3.57	0.00	0.54	0.00	421	0.00	0.00	0.00
1965		0.00	0.00	0.00	0.00	0.00	0.00	0.00	0.00	0.00

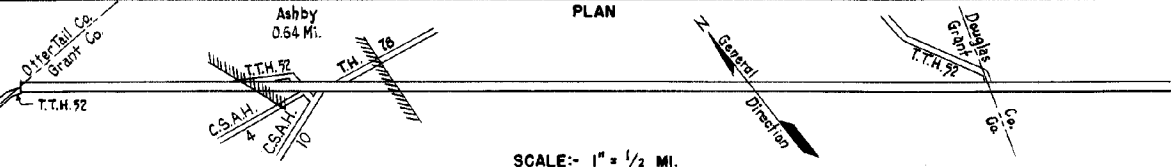
REMARKS: Layout is to scale as of 1936.

PREPARED BY  
HIGHWAY PLANNING SURVEY  
IN COOPERATION WITH  
U. S. PUBLIC ROADS ADMINISTRATION

STATE OF MINNESOTA  
DEPARTMENT OF HIGHWAYS  
ROAD LIFE STUDIES  
CONSTRUCTION PROJECT LOG RECORD

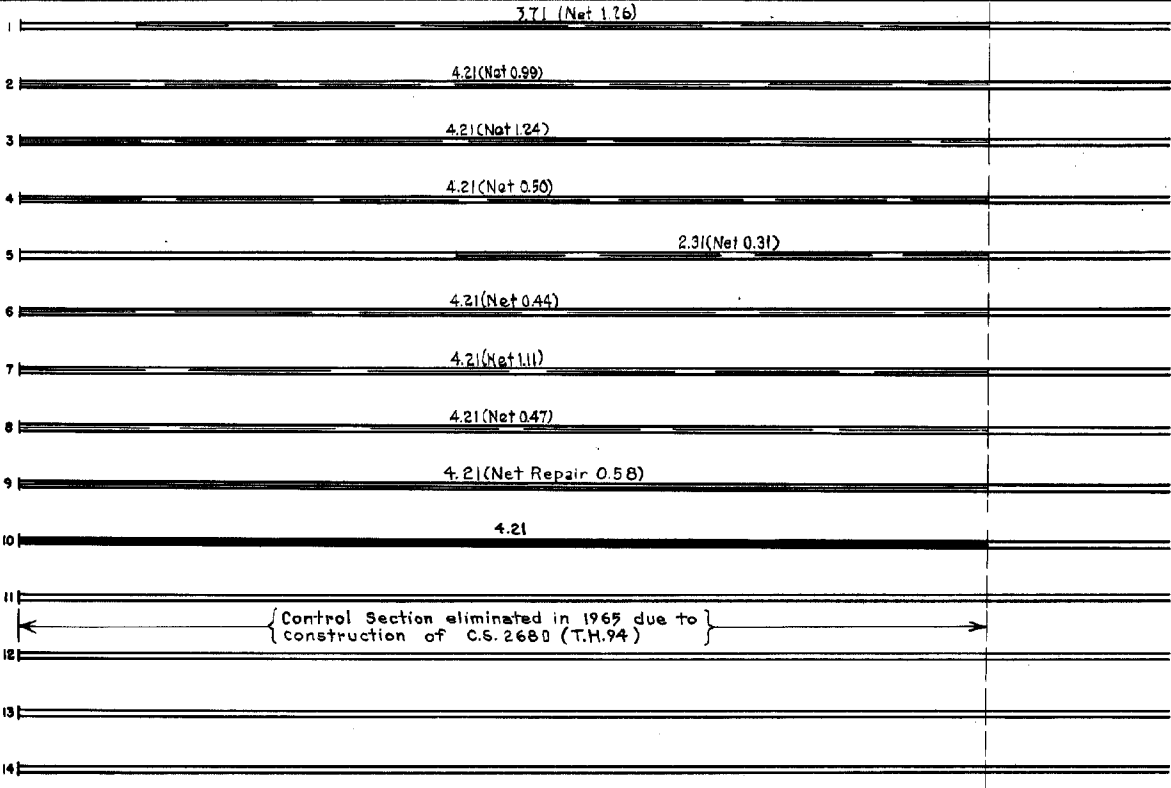
CONTROL SECTION 7606  
TRUNK HIGHWAY 92  
COUNTY Grant  
DISTRICT 4B

LIMITS: North Co. Line to East Co. Line



SCALE: 1" = 1/2 MI.

YEAR BUILT	PROJECT N°	DESCRIPTION			CODE N°
		TYPE	WIDTH	THICKNESS	
M 1950	A.F.E. 4	Spot Treat. Bit. Surface Repair	24'	SC-3 Agg. 416 C.Y.	1
M 1951	A.F.E. 4	Spot Treat. Bit. Surf. Repair	24'	SC-3, 6810 Gal. Agg. 360 C.Y.	2
M 1952	A.F.E. 4	Spot Treat. Bit. Surf. Repair	24'	SC3&MC2, 8299 Gal. Agg. 420 C.Y.	3
M 1953	A.F.E. 604	Spot Treat. Bit. Surf. Repair	24'	SC3, 5028 Gal. Agg. 250 C.Y.	4
M 1954	A.F.E. 604	Spot Treat. Bit. Surf. Repair	24'	SC-3&MC 2, 3090 Gal. Agg. 210 Tons	5
M 1955	A.F.E. 604	Spot Treat. Bit. Surf. Repair	24'	MC-2, 4725 Gal. Agg. 339 Tons	6
M 1956	A.F.E. 604	Spot Treat. Bit. Surf. Repair	24'	MC2, 10838 Gal. Agg. 721 Tons	7
M 1957	A.F.E. 604	Spot Treat. Bit. Surf. Repair	24'	MC2, 4670 Gal. Agg. 297 Tons	8
M 1958	A.F.E. 604 A.F.E. 605	Spot Treat. Bit. Surf. Repair Light Bit. Seal	24' 24'	MC2 & RC2, 14182 Gal. Agg. 389 Tons & 273 C.Y.	9
C 1965	C Maint. Div.	Plant Mix Bit. Grav. Shoulders	24' added	5684 Tons 3561 Tons	10
					11
					12
					13
					14



YEARS FROM	TO	TOTAL MILES	UNINCORPORATED		INCORPORATED		RURAL		URBAN	
			RDWY. MI.	BR. MI.	RDWY. MI.	BR. MI.	RDWY. MI.	BR. MI.	RDWY. MI.	BR. MI.

REMARKS: See Sheet No. 1