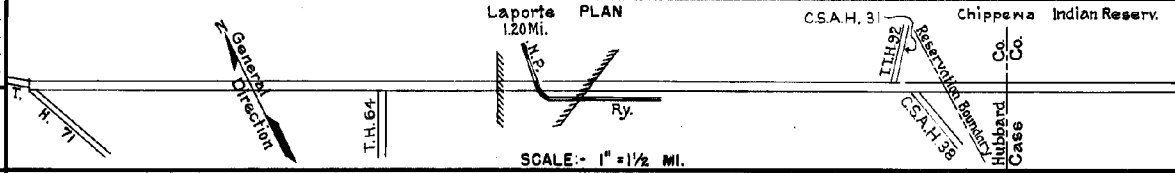


PREPARED BY
HIGHWAY PLANNING SURVEY
IN COOPERATION WITH
U. S. PUBLIC ROADS ADMINISTRATION

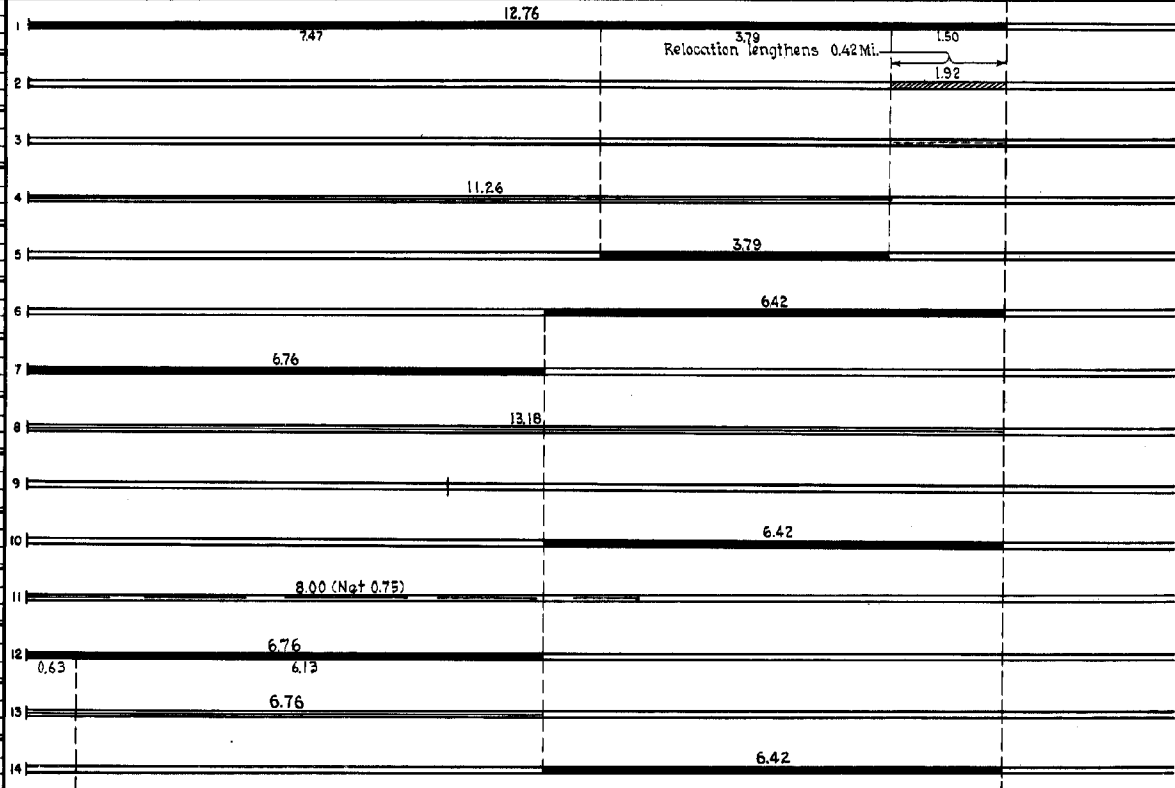
STATE OF MINNESOTA
DEPARTMENT OF HIGHWAYS
ROAD LIFE STUDIES
CONSTRUCTION PROJECT LOG RECORD

CONTROL SECTION 2908
TRUNK HIGHWAY 299
COUNTY Hubbard
DISTRICT 2A

LIMITS: E. Jct. T.H. 71 - E. Co. Line



YEAR BUILT	PROJECT N ^o	DESCRIPTION			CODE N ^o DIST
		TYPE	WIDTH	THICKNESS	
		Gravel	24'	3/4"	No Record of Constr.
		Grading	34'		Added in 1934.
1939	2908-01	Stab. Grav Subgrade	34'	4"	238
1939	2908-05	Seeding			Maint. Dept.
M	1942 A.F.E. 6	Regravel & Clay Stabilization	24'		Grav. & Clay 614 C.Y./Mi. Maint. Dept.
C	1949 2908-06	Grading	30'		Spot Subgr. Treatment
		Gravel	24'	1 1/2"	800 C.Y./Mi. 248
C	1949 A.F.E. 27	Bit. Surfacing	26'	1"	SC-3, 75399 Gal. Agg. 3765 Tons
		Mixed Bit. (Mixed Prime)			
C	1949 A.F.E. 16	Gravel Base	26'	1"-10"	SC-3, 93141 Gal. Agg. 9281 Tons (Mixed Prime)
		Bit. Surfacing	26'	2"	
		Mixed Bit.			
M	1950 A.F.E. 4	Bit. Fog Seal	26'		RCS-1, 16006 Gal. Agg. 507 C.Y.
C	1951 A.F.E. 16	Install Portable Culvert			MC-3, 1200 Gal. Agg. 64 C.Y.
		Replace Bit Surf.	24'		
C	1951 A.F.E. 26	Bit. Surfacing	24'	1"	MC-3, 56469 Gal. Agg. 4865 Tons
		Mixed Bit.			
M	1952 A.F.E. 4	Spot Treat.			MC-2, 6150 Gal. Agg. 357 C.Y.
		Bit. Surf. Repair	26'		
C	1953 A.F.E. 820	Bit. Resurfacing	24'	1" added	MC-2, 55607 Gal. Agg. 4921 Tons
		Mixed Bit.			
M	1955 A.F.E. 805	Light Bit. Seal	22'		RCS-2, 9709 Gal. Agg. 388 C.Y.
C	1955 A.F.E. 821	Bit. Resurfacing	24'	1" added	MC-3, 55159 Gal. Agg. 4718 Tons
		Mixed Bit.			



YEARS		TOTAL MILES	UNINCORPORATED		INCORPORATED		RURAL		URBAN	
FROM	TO		RDWY. MI.	BR. MI.	RDWY. MI.	BR. MI.	RDWY. MI.	BR. MI.	RDWY. MI.	BR. MI.
1934	1938	12.76	11.56	0.00	1.20	0.00	12.76	0.00	0.00	0.00
1939		13.18	11.98	0.00	1.20	0.00	13.18	0.00	0.00	0.00

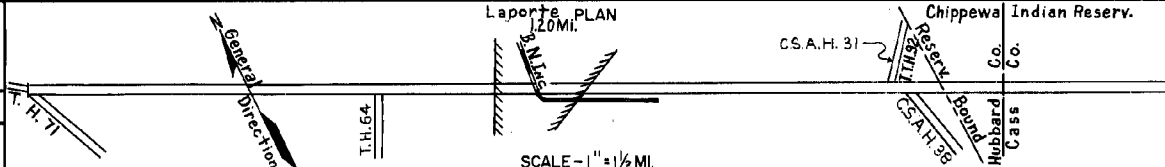
REMARKS: Layout is to scale as of 1934

PREPARED BY
TRAFFIC AND PLANNING DIVISION
IN COOPERATION WITH
U.S. DEPARTMENT OF COMMERCE
BUREAU OF PUBLIC ROADS

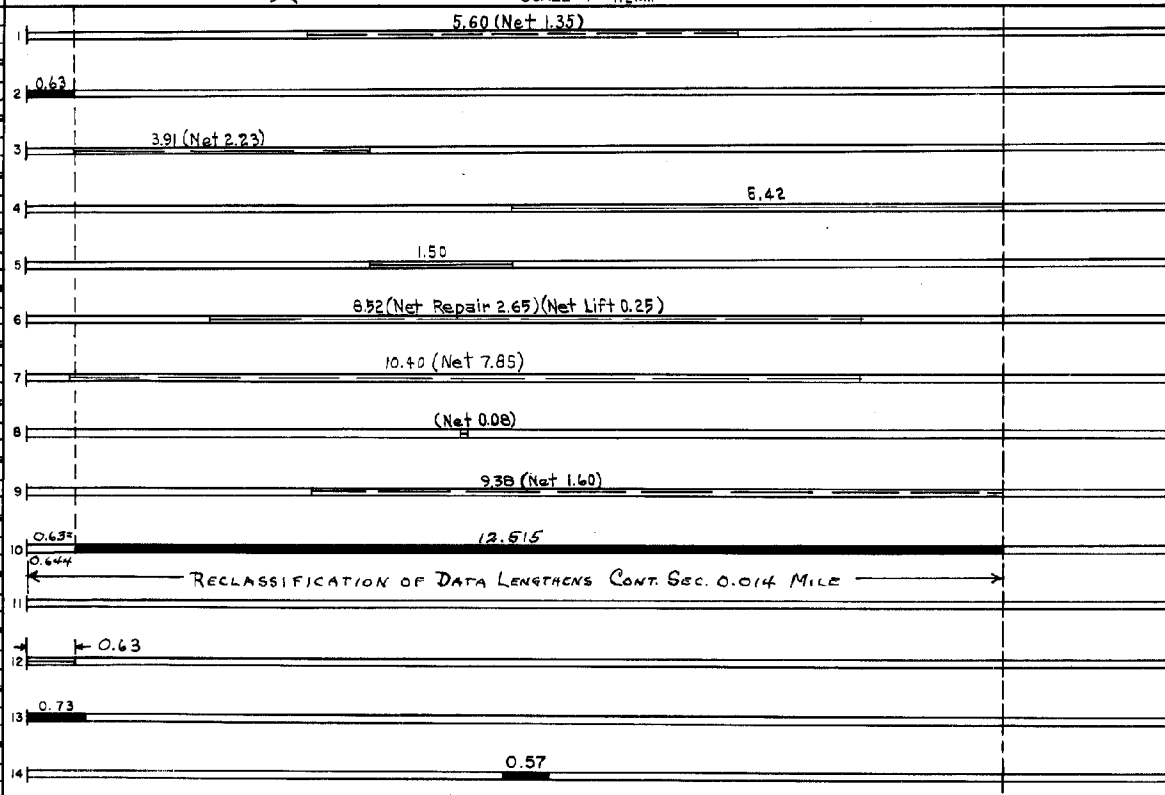
STATE OF MINNESOTA
DEPARTMENT OF HIGHWAYS
ROAD LIFE STUDIES
CONSTRUCTION PROJECT LOG RECORD

CONTROL SECTION 2908
TRUNK HIGHWAY 200
COUNTY Hubbard
DISTRICT 2A

LIMITS E.Jct. T.H. 71 - E.Co.Line



Dist. No.	YEAR BUILT	PROJECT NO.	DESCRIPTION			REMARKS
			TYPE	WIDTH	THICKNESS	
660	M 1959	A.F.E. 604	Bit. Surf. Repair	24'		MC 12280 Gal. Agg. 787 Tons
	C 1961	2908-10	Grading Sub-base & Base Plant Mix Bit. (Base)	26'		Also reconstruction of south leg at the E.Jct. T.H. 71
1343	M 1962		Spot Treat. Bit. Surf. Repair	24'		MC-2, 20, 229 Gal. Agg. 1631 Tons
	M 1963		Light Bit. Seal	25'		RS-2, 11237 Gal. Agg. 388 C.Y.
1375	M 1964	S.F.	Bit. Surf. Repair	24'	1"	MC-2, 17698 Gal. Agg. 882 C.Y.
	M 1966	SF	Spot Treat Bit. Surf. Repair Spot Grade Lifts	24' 30'		MC-250, 12048 Gal. Agg. 1274 Tons 2345 Tons (Lift)
1168	M 1967	SF	Bit. Surf. Repair	24'	1/2"	MC-250 Bit. 79,068 Gal. Rd. Mix Bit. 4,116 Ton
	M 1969	SF	Grade lift Bit. Surf. Repair	28' 24'	15" 2"	714 Tons MC-260-1,400 Gals. Agg. 84 Tons
1491	M 1970	SF	Bit. Surf. Repair	24'	1 1/2"	MC-250, 17847 Gals. Agg. 1183 Tons
	C 1975	2908-15	Misc. Base Lint. Level. RESURF. 233' RESURF. 233'	26' 24'		Also Rt. TURN LANES 105+00.700-116+00.152 118+00.152-118+00.148
1491	M 1978	SF	LIGHT BIT. SEAL			RC250 SEAL 1200 GAL Agg. 45 C.Y.
	C 1981	2908-18	Bit. Surf. Bit. Shoulder	24' 8'	4 1/2" 1 1/2"	
1491	C 1982	2908-17	Safety Improvements Bit. Surfacing Turn Lanes	24'	3 1/2"	CSAH-39



YEARS FROM	YEARS TO	TOTAL MILES	UNINCORPORATED		INCORPORATED		RURAL		URBAN	
			RDWY. MI.	BR. MI.	RDWY. MI.	BR. MI.	RDWY. MI.	BR. MI.	RDWY. MI.	BR. MI.

REMARKS: See Sheet No. 1

