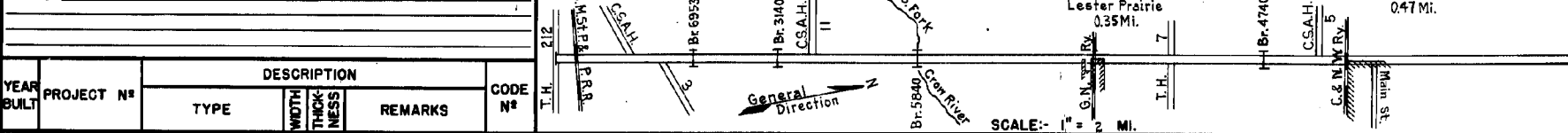


PREPARED BY  
HIGHWAY PLANNING SURVEY  
IN COOPERATION WITH  
U.S. PUBLIC ROADS ADMINISTRATION

STATE OF MINNESOTA  
DEPARTMENT OF HIGHWAYS  
ROAD LIFE STUDIES  
CONSTRUCTION PROJECT LOG RECORD

CONTROL SECTION 4311  
TRUNK HIGHWAY 261  
COUNTY McLeod  
DISTRICT 6A

LIMITS: Jct. T.H. 212 - Main St. in Winsted



YEAR BUILT	PROJECT N <sup>o</sup>	DESCRIPTION			CODE N <sup>o</sup>	
		TYPE	WIDTH	THICKNESS		
1939	43-501	Grading Bridge 5840	24'	24'	Added in 1949 80 L.T.	1
1940	43-501-01	Grading Gravel Br. 6952 & 2140	26' 26' 31 1/2'	26' 26' 31 1/2'	Added in 1949 1000 C.Y./Mi. 8' C.S. & 18' C.S.	2
1948	43-501-06	Grading	28'	28'	Added in 1949	3
1948	43-501-07	Gravel Bridge 4740	28' 30'	28'	Added in 1949 19 B.S.	4
		Gravel Culvert (Br. 6952)	24'	24'	No Record of Const. Added in 1949 13' x 9' Timber Box	5
		Mixed Bit.	24'	24'	No Record of Const. Added in 1949	6
M	1949 A.F.E. 6	Grav. Resurfacing			6547 Tons	7
C	1950 4311-01	Gravel Base Mixed Bit.	26' 24'	7" 11" 1"		8
M	1951 A.F.E. 4	Light Bit. Seal	24'	24'	RS-1, 7917 Gal. Agg. 231 C.Y.	9
M	1952 A.F.E. 22 A.F.E. 6	Spot Reshaping Grav. Resurface			5544 C.Y.	10
C	1953 4311-02	Gravel Base Plant Mix Bit.	26' 22'	0-6" 1 1/2"	added thickness	11
C	1953 A.F.E. 221	Gravel Base Mixed Bit.	30' 24'	5" 11" 1"	MCQ62 136459 Gal. Agg. 7320 Tons	12
M	1954 A.F.E. 605	Light Bit. Seal	24'	24'	RC-2 17332 Gal. Agg. 640 C.Y.	13
M	1955 A.F.E. 818 A.F.E. 604	Spot Stab. Grav. Lifts Restore Bit. Surf.	24'	24'	13082 Tons MC2, 26384 Gal. Agg. 2521 Tons	14
M	1956 A.F.E. 605	Bit. Seal Coat	24'	24'	RC-5 17628 Gal. Agg. 715 C.Y.	

YEARS		TOTAL MILES	UNINCORPORATED		INCORPORATED		RURAL		URBAN	
FROM	TO		RDWY. MI.	BR. MI.	RDWY. MI.	BR. MI.	RDWY. MI.	BR. MI.	RDWY. MI.	BR. MI.
1949	1949	15.36	15.68	0.02	0.26	0.00	15.94	0.02	0.00	0.00
1950	1959	15.97	15.69	0.02	0.26	0.00	15.95	0.02	0.00	0.00
1960	1964	15.97	15.57	0.02	0.38	0.00	15.85	0.02	0.12	0.00
1965	1967	15.97	15.22	0.02	0.73	0.00	15.48	0.02	0.47	0.00
1968		15.97	15.13	0.02	0.82	0.00	15.50	0.02	0.47	0.00

REMARKS: Layout is to scale as of 1949

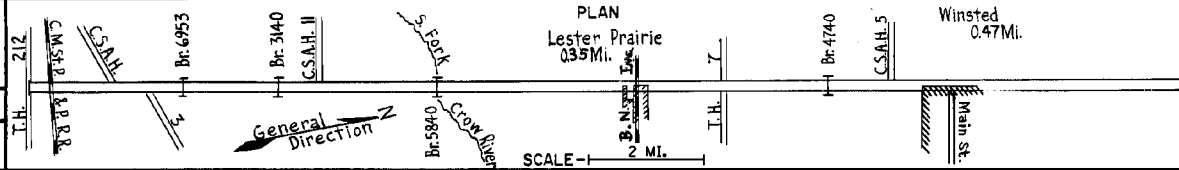
PREPARED BY  
TRAFFIC AND PLANNING DIVISION  
IN COOPERATION WITH  
U.S. DEPARTMENT OF COMMERCE  
BUREAU OF PUBLIC ROADS

STATE OF MINNESOTA  
DEPARTMENT OF HIGHWAYS  
ROAD LIFE STUDIES  
CONSTRUCTION PROJECT LOG RECORD

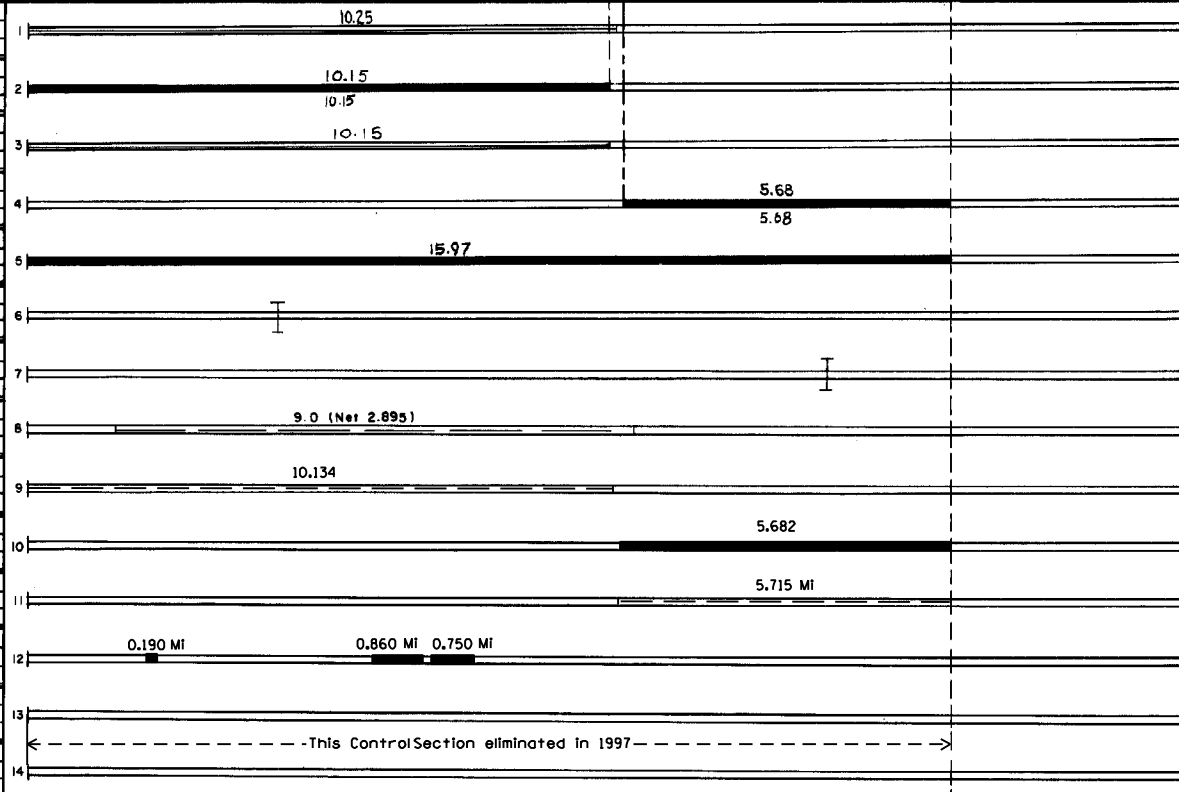
CONTROL SECTION 4311  
TRUNK HIGHWAY 261  
COUNTY McLeod  
DISTRICT 8A

LIMITS Jct. T.H. 212 - Main St. in Winsted

Ref. Pt. 000+00.000 - 015+00.964



YEAR BUILT	PROJECT NO.	DESCRIPTION				REMARKS
		TYPE	WIDTH	THICKNESS		
M 1960		Light Bit Seal	24'			RS-1, 16157 Gal. Agg. 784 Tons
C 1964	By Maint. Div.	Road Mix Bit.	24'	1"		MC-2, 107796 Gal.
M 1965	c	Light Bit. Seal	25'			RS-1C, 20175 Gal. Agg. 810 C.Y.
C 1967	4311-04	Plant Mix Bit. Gravel Shoulders	22'	3"		
C 1974	4311-07	Bit. Overlay Gravel Shoulders	24'	1 1/2" 3"		
C 1976	4311-11 RF116-1(30)	BR. 91500				2-115"x72" RCPA REPL. # 3140
C 1976	4311-11 RS4127(2)	BR. 91499				154"x97" RCPA REPL. # 4740
M 1984	SF	Spot Bit. Overlays	24'	1 1/2"		Sp. 2331, 3482 Tons
M 1986	4198	Spot Overlay		1 1/2"		
C 1988	4311-14	Bit. Overlay	26'	1 1/2"		Spec. 2341
M 1993	93147	Bit. Sealing				
M 1994	94149	Bit. Overlay	24'	1 1/2"		Spec. 2341



YEARS FROM	TO	TOTAL MILES	UNINCORPORATED		INCORPORATED		RURAL		URBAN	
			RDWY. MI.	BR. MI.	RDWY. MI.	BR. MI.	RDWY. MI.	BR. MI.	RDWY. MI.	BR. MI.

REMARKS: See Sheet No. 1