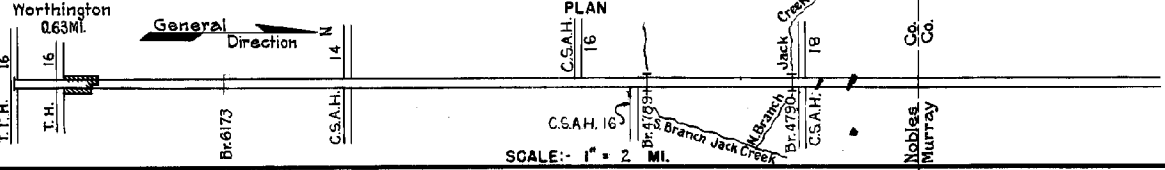


PREPARED BY
HIGHWAY PLANNING SURVEY
IN COOPERATION WITH
U.S. PUBLIC ROADS ADMINISTRATION

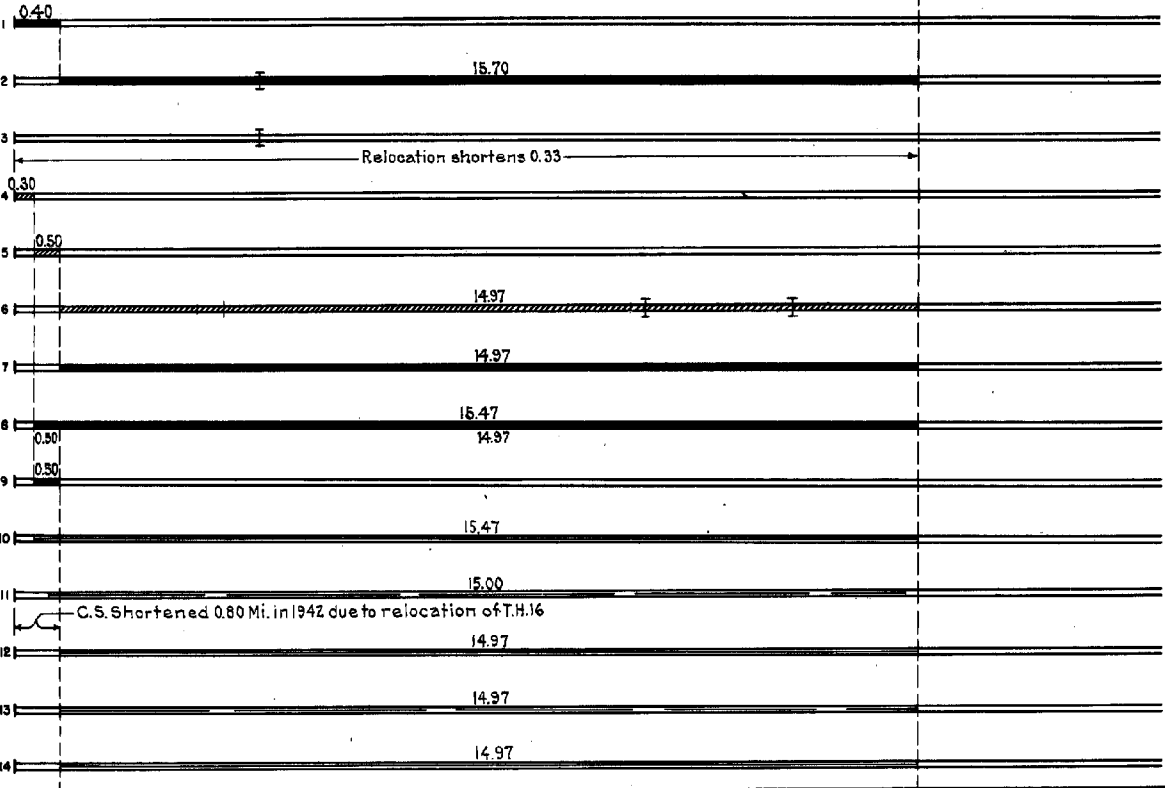
STATE OF MINNESOTA
DEPARTMENT OF HIGHWAYS
ROAD LIFE STUDIES
CONSTRUCTION PROJECT LOG RECORD

CONTROL SECTION 5304
TRUNK HIGHWAY 59
COUNTY Nobles
DISTRICT TB

LIMITS: Jct. T.H. 16 in Worthington - N. Co. Line



YEAR BUILT	PROJECT N°	DESCRIPTION			CODE N°
		TYPE	WIDTH	THICKNESS	
		Gravel	20'		No Record of Constr.
		Gravel Br. 1646	20' 18'	2"	No Record of Constr. 20 R.C. Slab
1920	59-16-2	Br. 3416	20'		23 B.S.
		Concrete	35'		No Record of Constr. Taken over from City in 1929.
		Gravel	20'		No Record of Constr. Taken over from City in 1929.
1929	59-16-28A	Grading Br. 6173, 4789 & 4790	32' 27'		W108 D. 30 B.S. & 40 B.S.
1930	59-16-28A	Gravel	24'	3 1/2"	1600 C.Y./Mile.
1931	59-16-28 (1) 59-16-28A (1)	Oil Tr. Gravel	22 3/4'	1"	18600 Gal./Mile. Maint. Dept.
1934	(Void) Not Paved	Concrete	35'		No Record of Constr. Status Map shows Concrete in 1934.
M	1940 A.F.E. 30	Bit. Retreat.			MC 3, 364-472 Gal./Mi. Grav. 222 C.Y./Mi. Maint. Dept.
M	1941 A.F.E. 9	Spot Treat. Bit. Surf. Repair	24'		SG 3, 830 Gal./Mi. Grav. 47 C.Y./Mi. Maint. Dept.
M	1942 A.F.E. 4	Bit. Retreat.	24'		MC 3, 2702 Gal./Mi. Grav. 164 C.Y./Mi. Maint. Dept.
M	1943 A.F.E. 4	Spot Treat. Bit. Surf. Repair	24'		MC 3, 752 Gal./Mi. Grav. 68 C.Y./Mi. Maint. Dept.
M	1944 A.F.E. 4	Bit. Surf. Repair	24'		MC 3 & RT 5, 2308 G./M. Grav. 130 C.Y./Mi. Maint. Div.



YEARS FROM	TO	TOTAL MILES	UNINCORPORATED		INCORPORATED		RURAL		URBAN	
			RDWY. MI.	BR. MI.	RDWY. MI.	BR. MI.	RDWY. MI.	BR. MI.	RDWY. MI.	BR. MI.
1921	1928	16.10	15.69	0.01	0.40	0.00	15.69	0.01	0.40	0.00
1929	1941	15.77	14.96	0.01	0.80	0.00	14.96	0.01	0.80	0.00
1942	1954	14.97	14.96	0.01	0.00	0.00	14.96	0.01	0.00	0.00
1955	1960	14.97	14.94	0.03	0.00	0.00	14.94	0.03	0.00	0.00
1961	1962	14.97	14.85	0.05	0.09	0.00	14.85	0.03	0.09	0.00
1963	1963	14.97	14.76	0.05	0.18	0.00	14.76	0.03	0.18	0.00
1964	1965	14.97	14.73	0.03	0.21	0.00	14.73	0.03	0.21	0.00

REMARKS: Layout is to scale as of 1950

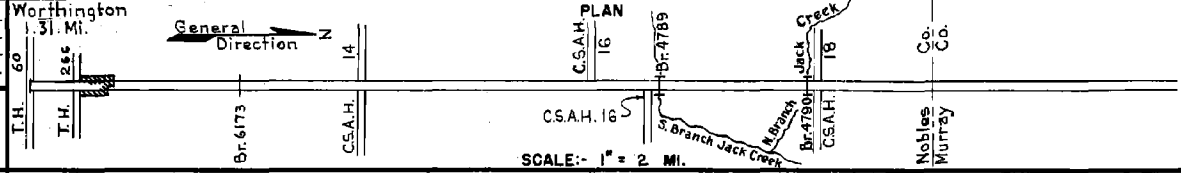
(1) This work not done under these project numbers but lies within the limits of these projects.

PREPARED BY
HIGHWAY PLANNING SURVEY
IN COOPERATION WITH
U.S. PUBLIC ROADS ADMINISTRATION

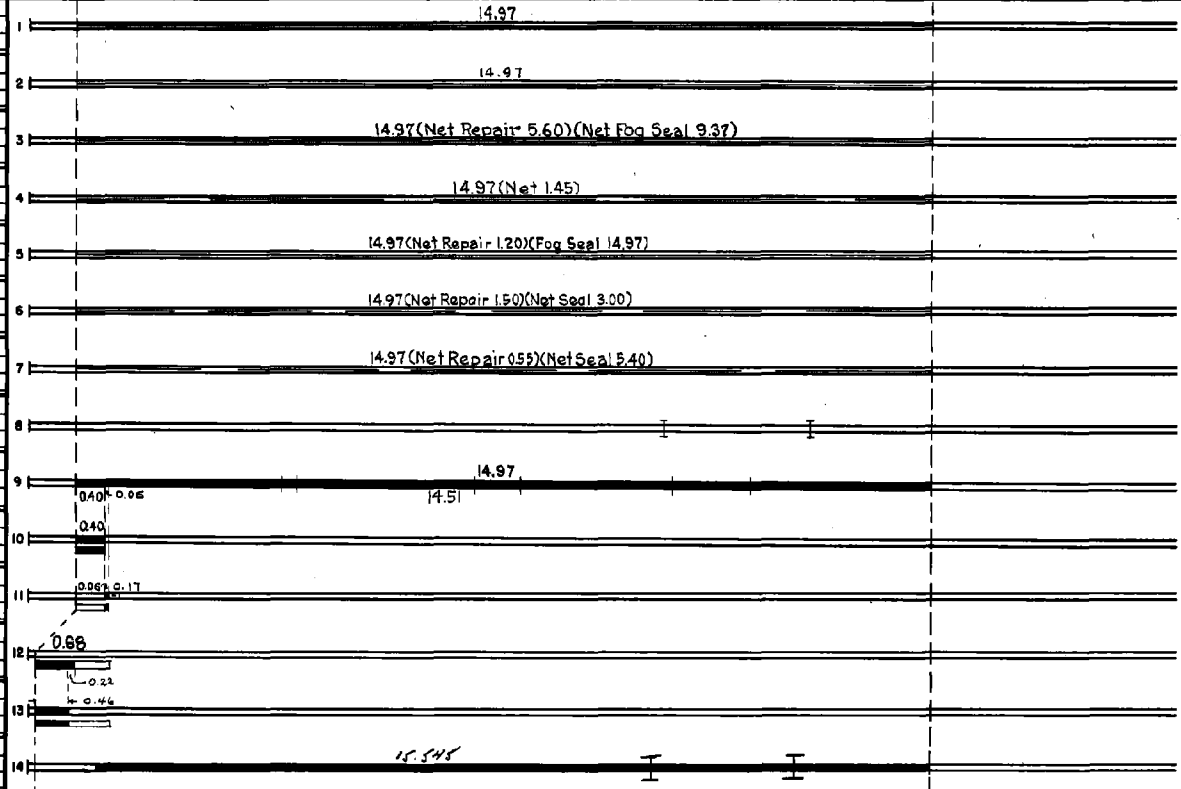
STATE OF MINNESOTA
DEPARTMENT OF HIGHWAYS
ROAD LIFE STUDIES
CONSTRUCTION PROJECT LOG RECORD

CONTROL SECTION 5304
TRUNK HIGHWAY 59
COUNTY Nobles
DISTRICT 7B

LIMITS: Jct. T.H. 60 in Worthington - N. Co. Line



YEAR BUILT	PROJECT N°	DESCRIPTION			CODE N°
		TYPE	WIDTH	THICKNESS	
M 1945	A.F.E. 16	Bit. Resurfacing		MC-2, 7031 Gal./Mi. Gray 303 C.Y./Mi. added Maint. Div.	
M 1946	A.F.E. 4	Spot Treat Bit. Surf. Repair & Fog Seal	24'	SC38RC3, 49691 Gal. Agg. 2506 C.Y.	
M 1947	A.F.E. 4	Spot Treat Bit. Surf. Repair & Fog Seal	24'	SC43RC4, 46922 Gal. Agg. 1750 C.Y.	
M 1949	A.F.E. 4	Spot Treat Bit. Surf. Repair	24'	SC4, 5636 Gal. Agg. 284 C.Y.	
M 1950	A.F.E. 4	Spot Treat Bit. Surf. Repair Bit. Fog Seal	24'	SC38RC3-1, 23534 Gal. Agg. 609 C.Y.	
M 1952	A.F.E. 4 A.F.E. 5	Spot Treat Bit. Surf. Repair Spot Light Bit. Seal	24'	Bit. 13742 Gal. Agg. 489 C.Y.	
M 1953	A.F.E. 604 A.F.E. 605	Spot Treat Bit. Surf. Repair Spot Light Bit. Seal	24'	SC3&R5-2, 10045 Gal. Agg. 480 C.Y.	
C 1955	5304-08	Br. 4789 (Reconst.)	30'	20' C.S. 30' B.S. & 20' C.S.	
C 1955	5304-09	Br. 4780 (Reconst.)	30'	24' C.S. 40' B.S. & 20' C.S.	
C 1955	5304-07	Grading	40'	Extend W64, W108D	
C 1955	5304-05	Gravel Base Concrete	40' 4"-9" 24' 8"-7-9"	(Br. 6173) W44, W88D W65 & W44 Culvs.	
C 1970	5304-11	Grading & Paving Concrete	78' 8"	Divided Highway	
C 1970	5380-13	Grade Gravel Base P.C. Concrete & Widening	8"	0.06 Mi. Divided 0.17 Mi. Widening	
C 1948	5302-13 5302-06 5302-16	Misc. Grading Grading Concrete	32' 66' 242'	Transferred from C.S. 5302 in 1973	
M 1979	SF	Bit. Overlay	24'	1 1/2" PL MIX AC	
C 1980	Br. 4780, 4789 5302-14 5302-1 (21)	Brayley Inc. Corr. Knox, Pawnee	24' 8"	Remove Br. 4780, 4789	



YEARS FROM	TOTAL MILES TO	UNINCORPORATED			INCORPORATED			RURAL		URBAN	
		RDWY. MI.	BR. MI.	BR. MI.	RDWY. MI.	BR. MI.	BR. MI.	RDWY. MI.	BR. MI.	BR. MI.	
1966	1966	14.97	14.35	0.03	0.59	0.00	14.35	0.03	0.59	0.00	
1967	1972	14.97	14.31	0.03	0.63	0.00	14.31	0.03	0.63	0.00	
1973		13.65	14.31	0.03	1.31	0.00	14.31	0.03	1.31	0.00	

REMARKS: See Sheet N° 1

6-74

