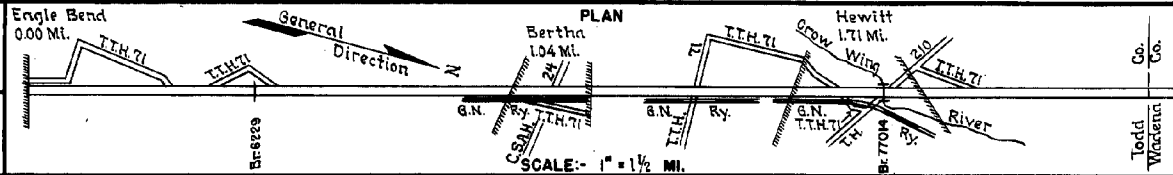


PREPARED BY  
HIGHWAY PLANNING SURVEY  
IN COOPERATION WITH  
U.S. PUBLIC ROADS ADMINISTRATION

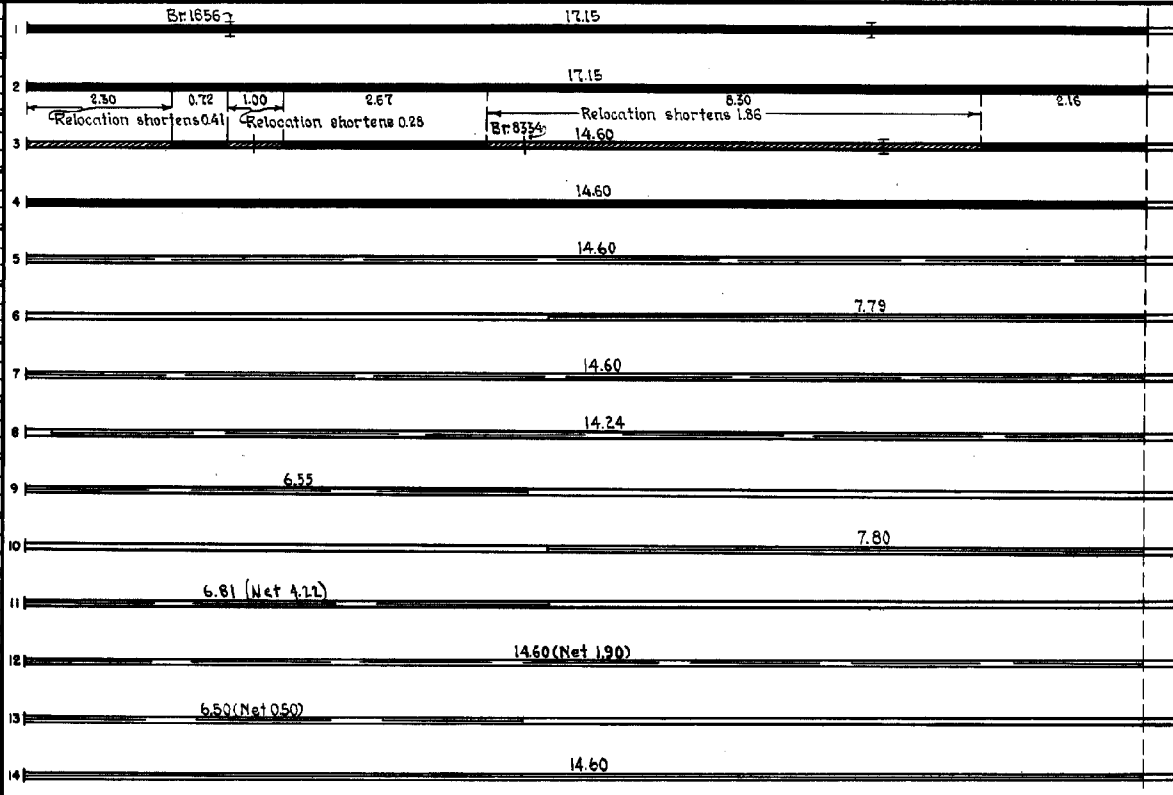
STATE OF MINNESOTA  
DEPARTMENT OF HIGHWAYS  
ROAD LIFE STUDIES  
CONSTRUCTION PROJECT LOG RECORD

CONTROL SECTION 1709  
TRUNK HIGHWAY 21  
COUNTY Todd  
DISTRICT 3A

LIMITS: N. Corp. Limits of Eagle Bend - N. Co. Line.



YEAR BUILT	PROJECT N <sup>o</sup>	DESCRIPTION			CODE N <sup>o</sup>
		TYPE	WIDTH	THICKNESS	
1920	71-4-8	Grading Br 1656 * 3065	24'	2 1/2"	
1921	71-4-01	Gravel	24'	2 1/2"	1200 C.Y./Mile.
1931	71-4-49-1	Grading Gravel Br 6229, 8334 * 5048	32' 24'	3" 2 1/2"	800 C.Y./Mile. W106D, W104 * 70 B.S.
1932	71-4-49-1	Oil Tr. Gravel	24'	1 1/2"	17454 Gal./Mile. Maint. Dept.
M	A.F.E. 45	Spot Treat. Bit. Surf. Repair			SC3, 544 Gal./Mi. Grav. 55 C.Y./Mi. Maint. Dept.
M	A.F.E. 39	Bit. Seal Coat	24'		RC3, 3773 Gal./Mi. Agg. 114 C.Y./Mi. Maint. Dept.
M	A.F.E. 4	Spot Treat. Bit. Surf. Repair	24'		Bit 2132 Gal./Mi. Agg. 108 C.Y./Mi. Maint. Dept.
M	A.F.E. 4	Spot Treat. Bit. Surf. Repair Grav. Lifts (Spots)	24'		MC2 & RF6, 3855 G./M. Grav. 245 C.Y./Mi. Maint. Dept.
M	A.F.E. 4	Spot Treat. Bit. Surf. Repair	24'		MC2 & RF6, 3635 G./Mi. Grav. 203 C.Y./Mi. Maint. Div.
M	A.F.E. 4	Bit. Surf. Repair	24'		RF6, 7177 Gal./Mi. Grav. 367 C.Y./Mi. Maint. Div.
M	A.F.E. 4	Spot Treat. Bit. Surf. Repair	24'		MC-3, 36524 Gal. Agg. 1843 C.Y.
M	A.F.E. 4	Spot Treat. Bit. Surf. Repair & Spot. Grdgs Lifts	24'		MC3, 17339 Gal. Agg. 642 C.Y.
M	A.F.E. 4	Spot Treat. Bit. Surf. Repair	24'		MC3, 3876 Gal. Agg. 212 C.Y.
M	A.F.E. 4	Bit. Fog Seal	24'		RCS-1, 20060 Gal. Agg. 440 C.Y.



YEARS FROM	YEARS TO	TOTAL MILES	UNINCORPORATED		INCORPORATED		RURAL		URBAN	
			RDWY. MI.	BR. MI.	RDWY. MI.	BR. MI.	RDWY. MI.	BR. MI.	RDWY. MI.	BR. MI.
1921	1930	17.15	14.29	0.01	2.85	0.02	17.12	0.03	0.00	0.00
1931		14.60	11.85	0.00	2.74	0.01	14.59	0.01	0.00	0.00

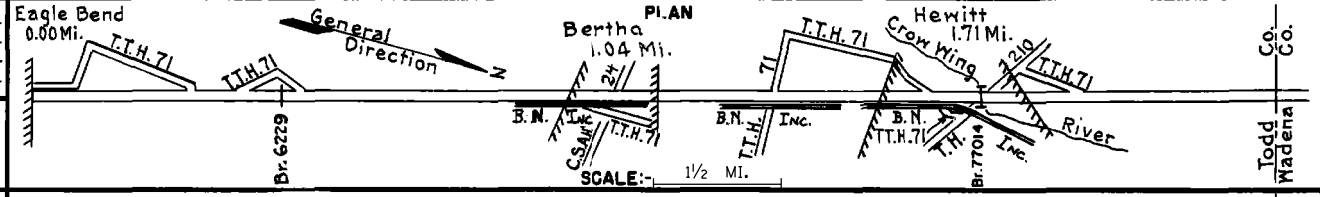
REMARKS: Layout is to scale as of 1931.  
(1) This work not done under this project number but lies within the limits of this project.

PREPARED BY  
HIGHWAY PLANNING SURVEY  
IN COOPERATION WITH  
U.S. PUBLIC ROADS ADMINISTRATION

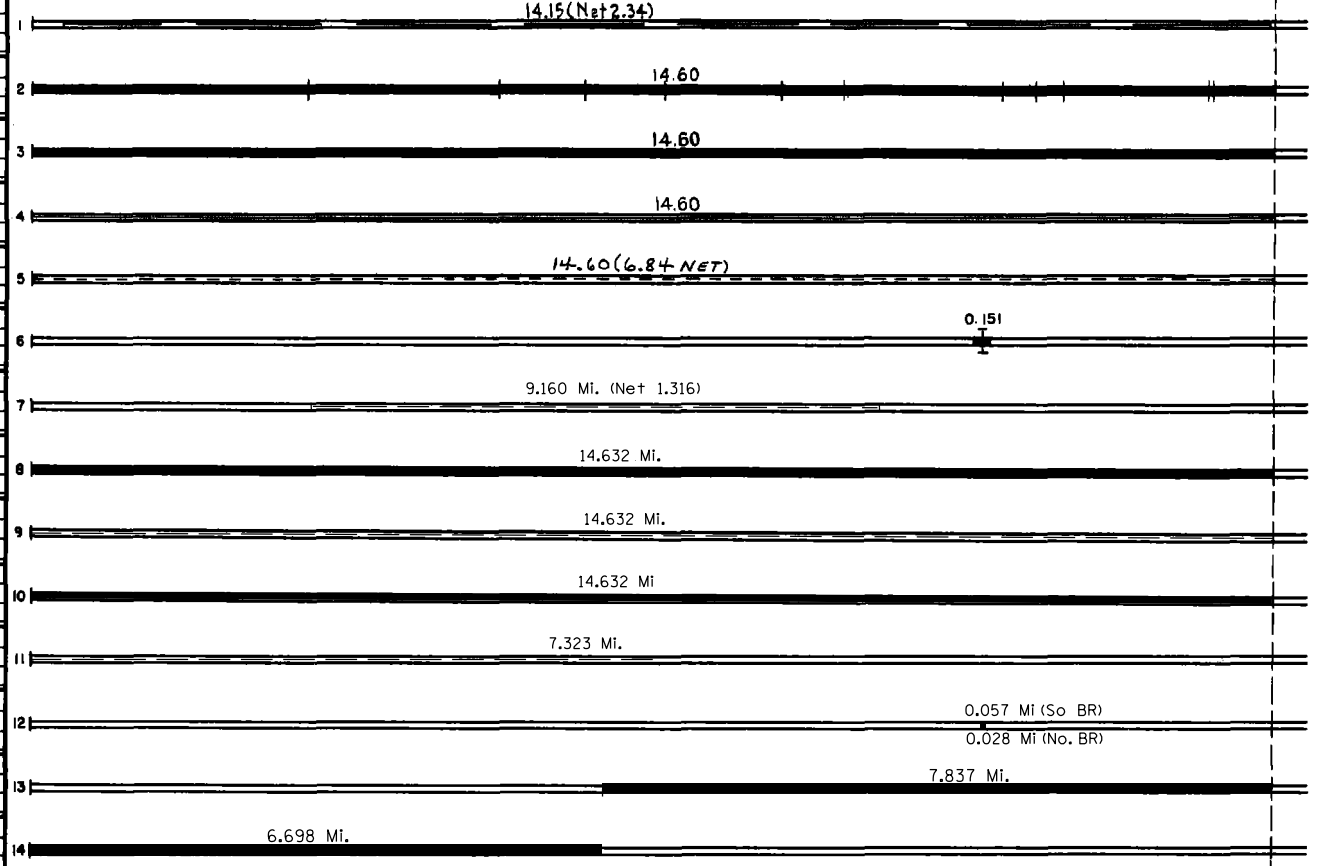
STATE OF MINNESOTA  
DEPARTMENT OF HIGHWAYS  
ROAD LIFE STUDIES  
CONSTRUCTION PROJECT LOG RECORD

CONTROL SECTION 7709  
TRUNK HIGHWAY 71  
COUNTY Todd  
DISTRICT 3A

LIMITS: N. Corp. Limits of Eagle Bend - N. Co. Line  
Ref. Pt. 205+00.065 - 219+00.635



YEAR BUILT	PROJECT N <sup>o</sup>	DESCRIPTION			CODE N <sup>o</sup>
		TYPE	WIDTH	THICKNESS	
M	1952 A.F.E.4	Spot Treat. Bit. Surf. Repair	24'		
C	1953 7709-04	Sand-Grav. Subbase Gravel Base Mixed Bit.	30'	0'-11" 4'-6" 26'	Regrading & Extend Culverts (2)
C	1955 7709-05	Plant Mix Bit.	24'	3" added	
M	1956 A.F.E.605	Bit. Seal Coat	24'		RS-2, 47129 Gal. Agg. 1624 C.Y.
C	1978 7709-09 CONT. #17167	RIGHT TURN LANES	12'	3"	Bit. Spec. 2331
C	1983 7709-10 BRF 004-3(38)	Grading Bit. Surfacing Br. 77014	44' 24'	4" 3 1/2"	Repl. Br 5048 117.7' Pre Conc. Gird
M	1986 SF	Spot Overlay	24'	Var.	Spec. 2331
C	1988 7709-12	Grading Bit. Surfacing	24'	4" 1"	Spec. 2331 Spec. 2341
M	1991 M4459	Bit. Sealing			
M	1997 7709-99212	Gravel Surfacing	3'	1 1/2"	Class 1
M	2002 8823-31	Bit. Seal Coat			FA-2
M	2002 8823-34	Bituminous Overlay Gravel Shoulders	26' 3'	2" 2"	Spec. 2350 Class 1
S	2005 7709-14	Bit. Overlay	24'	3"	Spec. 2360
	2013 7709-15	Milling Bit. Overlay	24'	3" 4"	Spec. 2360



YEARS FROM	TOTAL MILES	UNINCORPORATED		INCORPORATED		RURAL		URBAN	
		RDWY. MI.	BR. MI.	RDWY. MI.	BR. MI.	RDWY. MI.	BR. MI.	RDWY. MI.	BR. MI.

REMARKS: See Sheet No. 1  
(2) Extend W46, W64, W104, W64, W46, W44, W46, W66, W46, W44 & W46.

PREPARED BY BUREAU OF POLICY & PLANNING IN COOPERATION WITH U.S. DEPARTMENT OF TRANSPORTATION - FEDERAL HIGHWAY ADMINISTRATION

STATE OF MINNESOTA DEPARTMENT OF TRANSPORTATION CONSTRUCTION PROJECT LOG RECORD

CONTROL SECTION 7709 TRUNK HIGHWAY 71 COUNTY Todd DISTRICT 3A

LIMITS: N. limits of Eagle Bend - Todd/Wadena Co. Line Ref. Pt. 205+00.065 - 219+00.635

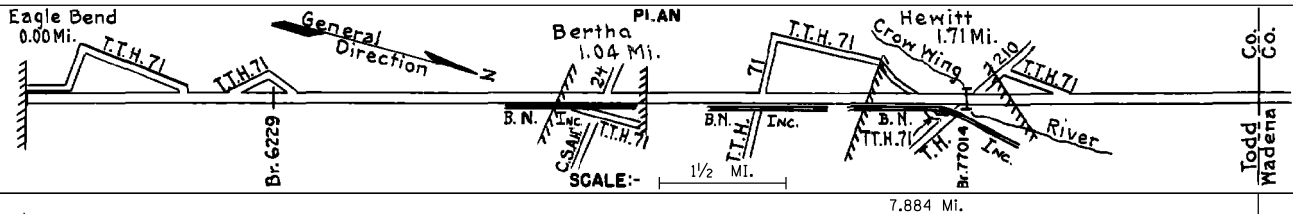


Table with columns: YEAR BUILT, PROJECT No, DESCRIPTION (TYPE, WIDTH, THICKNESS), and REMARKS. Contains one entry for 2016.

Summary table with columns: YEARS FROM TO, TOTAL MILES, UNINCORPORATED (RDWY. MI., BR. MI.), INCORPORATED (RDWY. MI., BR. MI.), RURAL (RDWY. MI., BR. MI.), URBAN (RDWY. MI., BR. MI.)

REMARKS: section for project notes and observations.