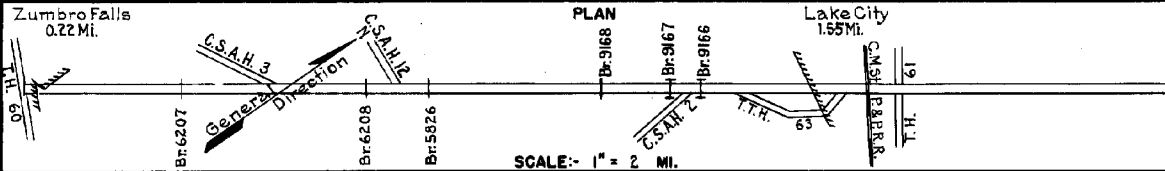


PREPARED BY  
HIGHWAY PLANNING SURVEY  
IN COOPERATION WITH  
U.S. PUBLIC ROADS ADMINISTRATION

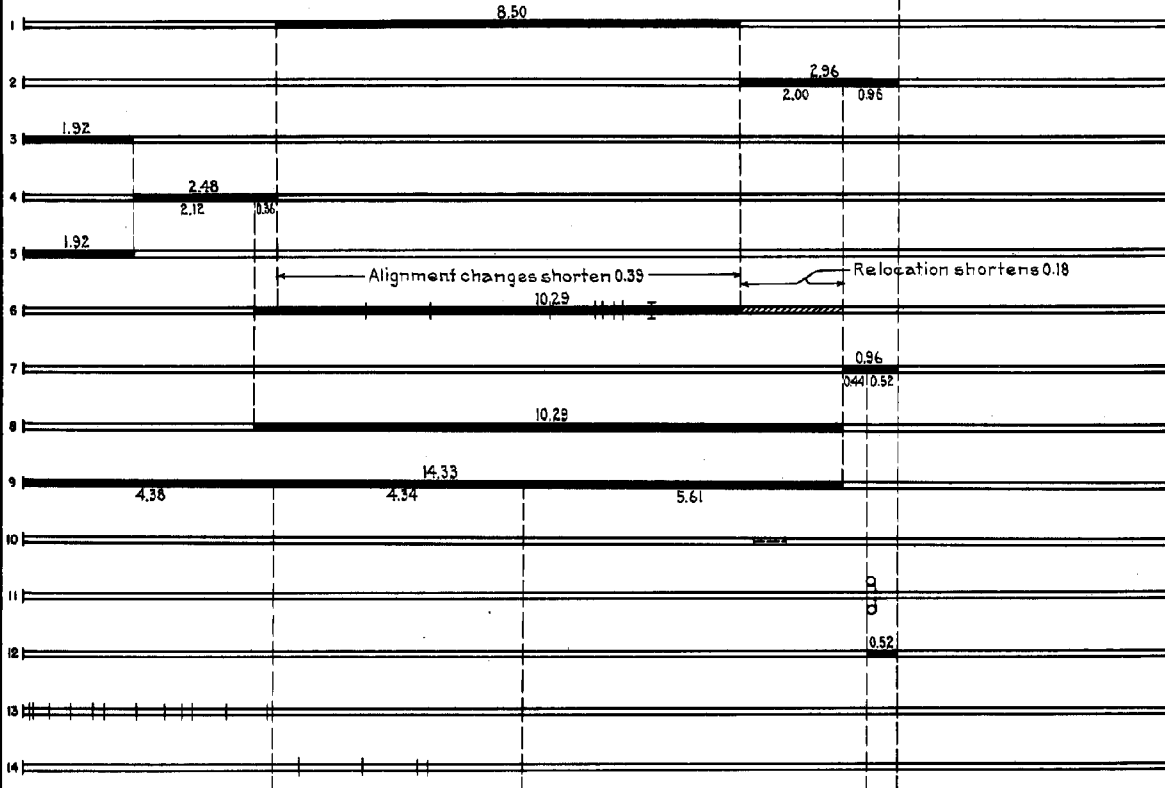
STATE OF MINNESOTA  
DEPARTMENT OF HIGHWAYS  
ROAD LIFE STUDIES  
CONSTRUCTION PROJECT LOG RECORD

CONTROL SECTION 7908  
TRUNK HIGHWAY 63  
COUNTY Wabasha  
DISTRICT 6A

LIMITS: Jct.T.H.60 in Zumbro Falls - Jct.T.H.61 in Lake City



YEAR BUILT	PROJECT N <sup>o</sup>	DESCRIPTION			CODE N <sup>o</sup>
		TYPE	WIDTH	THICKNESS	
		Earth			No Record of Constr.
		Gravel			No Record of Constr.
1925	63-59-21-1	Grading	30'		
1925	63-59-21-2	Grading Gravel	30' 24'		1600 C.Y./Mile.
1926	63-59-21-1	Gravel	24'		1700 C.Y./Mile.
1927	63-59-21-2&4	Grading Br.4660 Br.6208, 5826, 6209, 4657, 4658, 4659, & 4661	30' 27'		W1212 T. W105 D, W106 T, W104 D, 2 W1012 D, W1212 D & 60 C.O.G.
1927		Oil Tr. Gravel	VW		Maint. Dept.
1928	63-59-21-2&4	Gravel	24'		800-1600 C.Y./Mile.
1930	63-59-21-2&4	Oil Tr. Gravel	22'	1"	11979 Gal./Mile. Maint. Dept.
1930	63-59-21-4	Channel Change			
1936	63-59-21-4	Crossing Signals			
1936	63-59-21-4A	Concrete	20'	9-79	Widened with Bit. to 42-66 date un- known
1938	63-59-21-1&2	Mono Culverts			2 W106 & W105 D. 6 W46, 2 W64 & W84.
1938	63-59-21-4B	Mono Culverts			W105 D & W106 T. Exts. 2- W84.



YEARS FROM	YEARS TO	TOTAL MILES	UNINCORPORATED		INCORPORATED		RURAL		URBAN	
			RDWY. MI.	BR. MI.	RDWY. MI.	BR. MI.	RDWY. MI.	BR. MI.	RDWY. MI.	BR. MI.
1925	1926	15.86	14.02	0.00	1.84	0.00	14.40	0.00	1.46	0.00
1927	1937	15.29	13.36	0.01	1.92	0.00	13.74	0.01	1.54	0.00
1938	1958	15.26	13.49	0.01	1.76	0.00	13.71	0.01	1.54	0.00
1959		14.85	13.04	0.04	1.77	0.00	13.26	0.04	1.55	0.00

REMARKS: Layout is to scale as of 1927

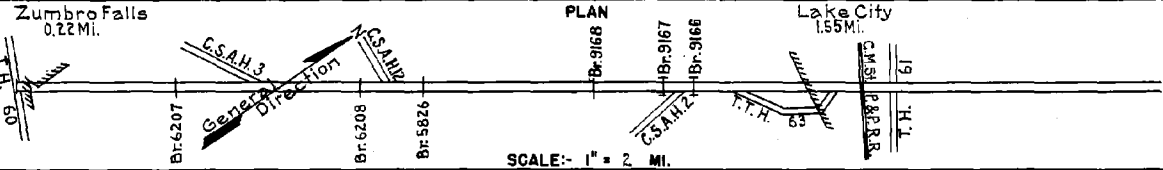
(1) This work not done under these project numbers but lies within the limits of these projects. (2) Divided Highway each roadway 30' wide 1.55 Miles. (3) Accumulated thickness.

PREPARED BY  
HIGHWAY PLANNING SURVEY  
IN COOPERATION WITH  
U.S. PUBLIC ROADS ADMINISTRATION

STATE OF MINNESOTA  
DEPARTMENT OF HIGHWAYS  
ROAD LIFE STUDIES  
CONSTRUCTION PROJECT LOG RECORD

CONTROL SECTION 7908  
TRUNK HIGHWAY 63  
COUNTY Wabasha  
DISTRICT 6A

LIMITS: Jct. T.H. 60 in Zumbro Falls - Jct. T.H. 63 in Lake City



YEAR BUILT	PROJECT N <sup>o</sup>	DESCRIPTION			CODE N <sup>o</sup>
		TYPE	WIDTH	THICKNESS	
1938	7908-04A & B	Grading Stab. Grav. Base	32 (2)	2 1/4"	
1938	7908-02	Grading	32		
1939	7908-03A & B	Stab. Grav. Base Bit. Surf. Treat.	32 (2)	6 3/4" 3/4"	
1939	7908-03C	Stab. Grav. Base Bit. Surf. Treat.	32 (2)	6" 3/4"	
1939	7908-01 A.F.E. 12	Seeding			Maint. Dept.
M	A.F.E. 13	Bit. Retreat & Frost. Boil Corr.	24		564,708 Gal./Mi. Grav. 297 C.Y./Mi. Maint. Dept.
M	A.F.E. 23	Bit. Seal Coat	24		RC 3,310 Gal./Mi. Agg. 89 C.Y./Mi. Maint. Dept.
C	A.F.E. 43	Masonry Gutter (Spots)			W.P.A. Maint. Dept.
M	A.F.E. 4	Spot Treat. Bit. Surf. Repair			MC 3,729 Gal./Mi. Grav. 29 C.Y./Mi. Maint. Dept.
C	7908-06	Mixed Bit.	28 5/8" Added	1 1/2"	
M	A.F.E. 4	Spot Treat. Bit. Surf. Repair & Bit. Seal Coat	24		MC 3,381 5/8 Gal./Mi. Agg. 143 C.Y./Mi. Maint. Div.
M	A.F.E. 4	Spot Treat. Bit. Surf. Repair & Sand Lift (Spots)			MC 3,325 1/2 Gal./Mi. Agg. 264 C.Y./Mi. Maint. Div.
C	A.F.E. 18	Bit. Resurfacing Mixed Bit.	24	1"	MC 3,437 1/8 Gal. Agg. 235 1/2 C.Y. Added
M	A.F.E. 5	Bit. Seal Coat	24		RC 3,324 7/8 Gal. Agg. 115 1/2 C.Y.

1	4.37	Alignment changes shorten 0.03			
2		4.32			
3	4.37				
4		4.32			
5					
6			6.05		
7		8.69			
8					
9		9.75			
10		8.69			
11			6.05		
12		3.90			
13			6.05	5.52	0.53
14		8.69			

YEARS FROM	TOTAL MILES TO	UNINCORPORATED		INCORPORATED		RURAL		URBAN	
		RDWY. MI.	BR. MI.	RDWY. MI.	BR. MI.	RDWY. MI.	BR. MI.	RDWY. MI.	BR. MI.

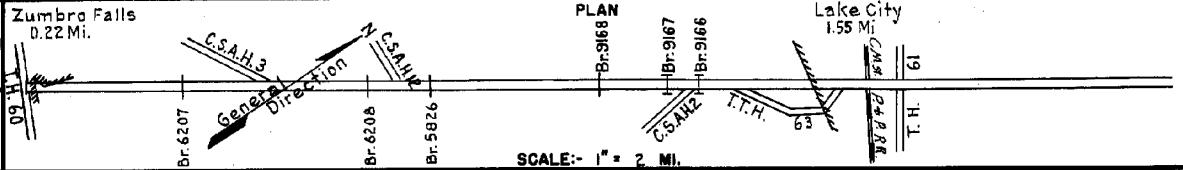
REMARKS: See Sheet No. 1

PREPARED BY  
HIGHWAY PLANNING SURVEY  
IN COOPERATION WITH  
U.S. PUBLIC ROADS ADMINISTRATION

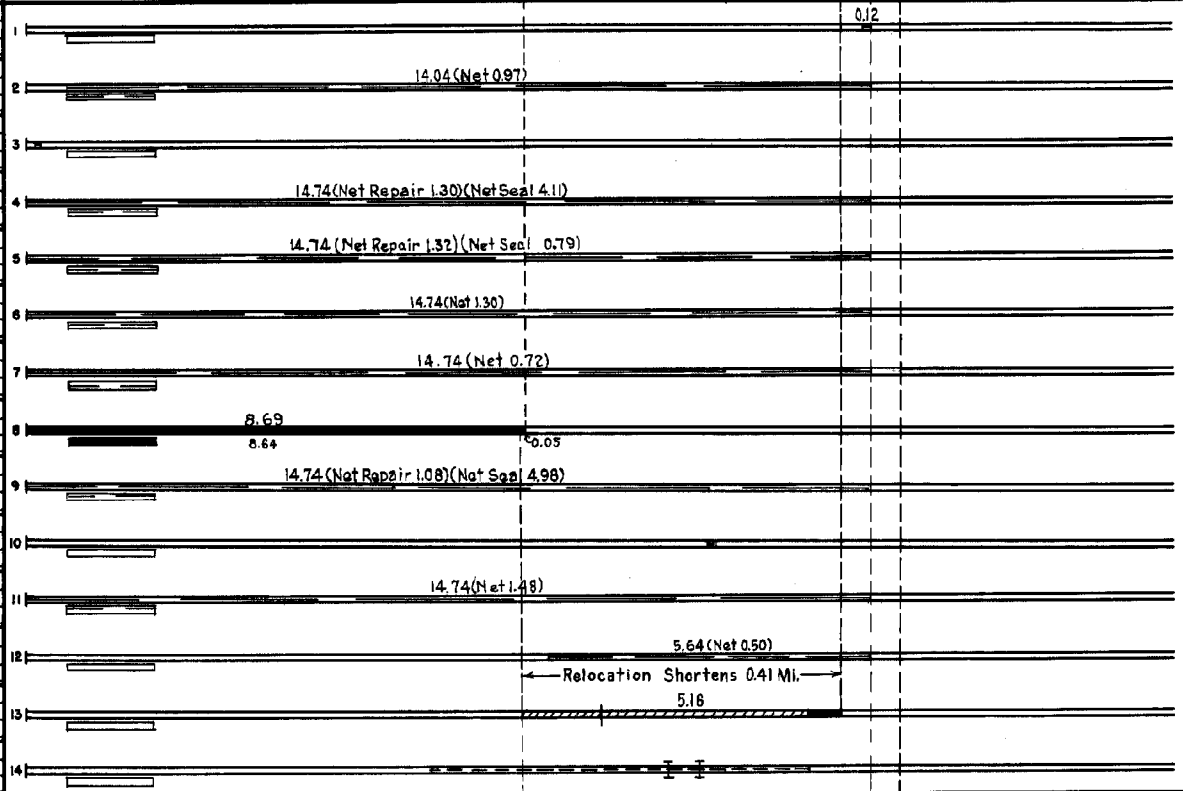
STATE OF MINNESOTA  
DEPARTMENT OF HIGHWAYS  
ROAD LIFE STUDIES  
CONSTRUCTION PROJECT LOG RECORD

CONTROL SECTION 7908  
TRUNK HIGHWAY 63  
COUNTY Wabasha  
DISTRICT 6A

LIMITS: Jct. T.H. 60 in Zumbro Falls - Jct. T.H. 61 in Lake City.



YEAR BUILT	PROJECT N <sup>o</sup>	DESCRIPTION			CODE N <sup>o</sup>
		TYPE	WIDTH	THICKNESS	
M 1947	A.F.E. 4	Bit. Surf. Repair	24'		
M 1948	A.F.E. 4	Spot Treat. Bit. Surf. Repair			
C 1948	A.F.E. 62	Erosion Control			
M 1949	A.F.E. 4	Spot Treat. Bit. Surf. Repair Spot Fog Seal	24'		
M 1950	A.F.E. 4	Spot Treat. Bit. Surf. Repair Spot Fog Seal	24'		
M 1951	A.F.E. 4	Spot Treat. Bit. Surf. Repair	24'		
M 1952	A.F.E. 4	Spot Treat. Bit. Surf. Repair	24'		
C 1952	7908-09	Cr. Rock Base Pl. Mix Bit.	30 1/2" 24 1/2"	3" 1 1/2"	Added Thickness
M 1953	A.F.E. 604 A.F.E. 605	Spot Treat. Bit. Surf. Repair Spot Light Bit. Seal	24'		
C 1953	A.F.E. 866	Erosion Control			Rip Rep
M 1955	A.F.E. 604	Spot Treat. Bit. Surf. Repair	24'		
M 1956	A.F.E. 604	Spot Treat. Bit. Surf. Repair	24'		
C 1959	7908-10	Grading, Gravel Mix Bit. (Base) Br. 9168	26'	1 1/2"	
C 1959	7908-11 7908-12 7908-13	Br. 9166 Br. 9167 Guard Rail	31' 30'		



YEARS FROM	TOTAL TO	UNINCORPORATED		INCORPORATED		RURAL		URBAN	
		RDWY. MI.	BR. MI.	RDWY. MI.	BR. MI.	RDWY. MI.	BR. MI.	RDWY. MI.	BR. MI.

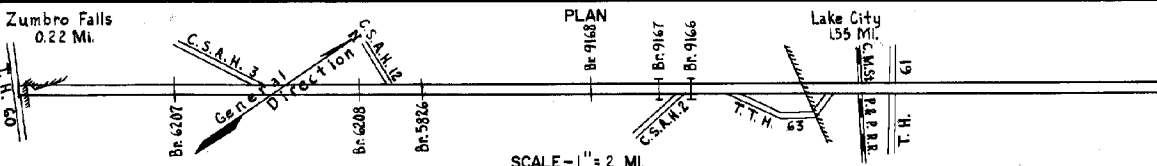
REMARKS: See Sheet No 1

PREPARED BY  
TRAFFIC AND PLANNING DIVISION  
IN COOPERATION WITH  
U.S. DEPARTMENT OF COMMERCE  
BUREAU OF PUBLIC ROADS

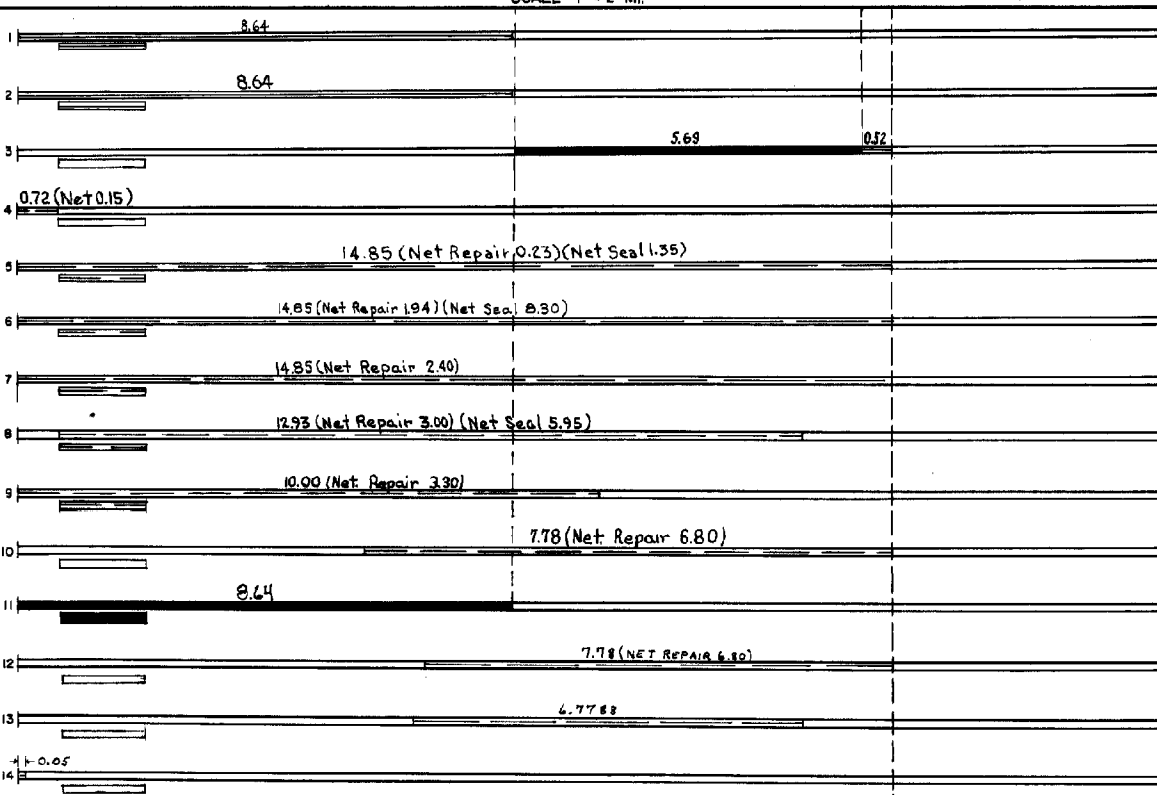
STATE OF MINNESOTA  
DEPARTMENT OF HIGHWAYS  
ROAD LIFE STUDIES  
CONSTRUCTION PROJECT LOG RECORD

CONTROL SECTION 7908  
TRUNK HIGHWAY 63  
COUNTY Wabasha  
DISTRICT 6A

LIMITS: Jct. T.H. 60 in Zumbro Falls - Jct. T.H. 61 in Lake City.



YEAR BUILT	PROJECT NO	DESCRIPTION			
		TYPE	WIDTH	THICKNESS	REMARKS
M 1959	A.F.E. 605	Light Bit. Seal	25'-49'		RS-2, 18109 Gal. Agg. 54.5 C.Y.
M 1962		Light Bit. Seal	Var.		RC-2, 11116 Gal. Agg. 377 C.Y.
C 1963	7908-14	Grading Base Plant Mix Bit Widening Rt & Lt of Lane	24'-44'	3-3 1/2"	Grading in Lake City for 0.32 mi (M.P. 1.473-1.486)
M 1964	SF	Spot Treat Bit. Surf. Repair	24'		RC-2 Tack, 96 Gal. Bit. Mix, 34 tons
M 1965	SF	Spot Treat Bit. Surf. Repair Light Bit. Seal	24'	3/4"	Bit. Mix 5647 Gal. Agg. 211 Tons
M 1966	C & SF	Bit. Surf. Repair Light Bit. Seal	24'	3/4"	Bit. Mix 324 Tons; CRS-1 18261 Gal. Agg. 611 C.Y.
M 1968	SF	Bit. Surf. Repair	24'	3/4"	MC-250, 25357 Gal. Agg. 1574 Tons
M 1969	SF	Bit. Surf. Repair Seal Coat	24'	3/4"	MC-250 Tack 1700 Gal. Agg. 1542 Tons; RC-800 8982 Gal. Agg. 340 C.Y.
M 1972	SF	Bit. Surf. Repair	24'	1/2"	RC-800 3,900 Gal. Agg. 742 Tons
M 1972	SF	Bit. Surf. Repair	24'		RC-800 17000 Gal. Agg. 500 C.Y.
C 1974	-19	P. Mix Bit Surf. Gravel Shldrs.	24'-49'	2 1/2"	
M 1972	SF	Bit. Surf. Repair	24'		RC-800 17000 GAL Agg. 500 C.Y.
M 1976	SF	SAND SEAL COAT	24'		CRS-1 18190 GAL SAND 620 C.Y.
C 1979	SF	RT TURN LANE	12'	2"	At Jct TH 60



YEARS FROM	TOTAL TO	UNINCORPORATED		INCORPORATED		RURAL		URBAN	
		RDWY. MI.	BR. MI.	RDWY. MI.	BR. MI.	RDWY. MI.	BR. MI.	RDWY. MI.	BR. MI.

REMARKS: See Sheet No 1

